

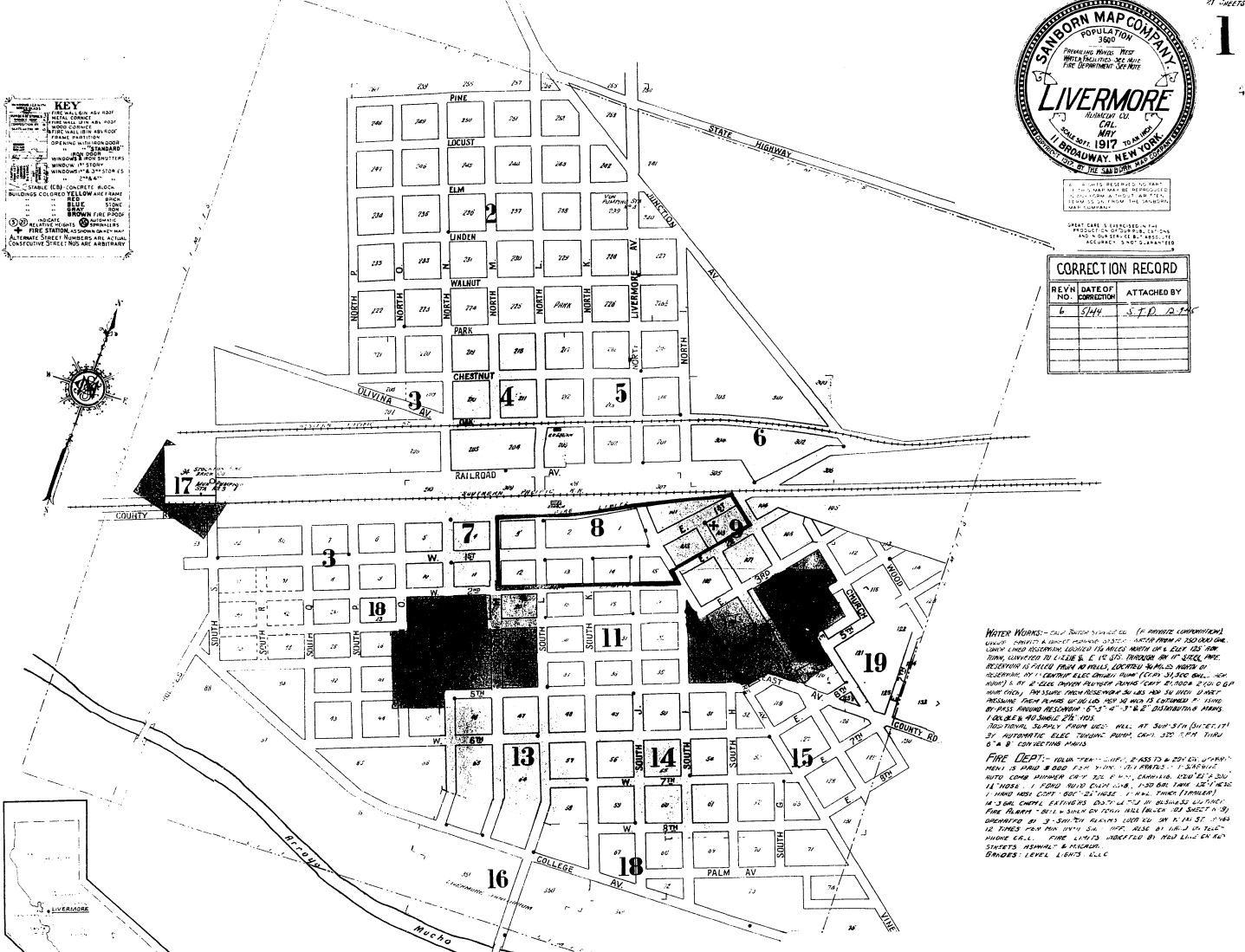


KEY

ALL BUILDINGS AND ROADS ARE SHOWN IN BLACK UNLESS OTHERWISE SPECIFIED. ALL WINDOWS ARE SHOWN IN BLACK UNLESS OTHERWISE SPECIFIED. ALL OPENINGS WITH DOORS ARE SHOWN IN BLACK UNLESS OTHERWISE SPECIFIED. ALL PORCHES ARE SHOWN IN BLACK UNLESS OTHERWISE SPECIFIED. ALL ROADS ARE SHOWN IN BLACK UNLESS OTHERWISE SPECIFIED. ALL RAILROADS ARE SHOWN IN BLACK UNLESS OTHERWISE SPECIFIED. ALL STRUCTURES ARE SHOWN IN BLACK UNLESS OTHERWISE SPECIFIED. ALL TANKS ARE SHOWN IN BLACK UNLESS OTHERWISE SPECIFIED. ALL MOUND ARE SHOWN IN BLACK UNLESS OTHERWISE SPECIFIED. ALL GRAVEL ARE SHOWN IN BLACK UNLESS OTHERWISE SPECIFIED. ALL CRACKS ARE SHOWN IN BLACK UNLESS OTHERWISE SPECIFIED. ALL FIRE STATION ARE SHOWN IN BLACK UNLESS OTHERWISE SPECIFIED. ALL ALTERNATE STREET NUMBERS ARE ACTUAL CONTIGUOUS STREET NUMBERS AND ARE NOT ABANDONED.

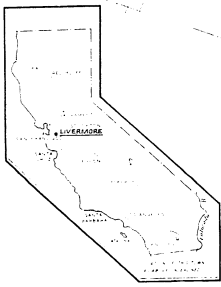
CORRECTION RECORD

REV. NO.	DATE OF CORRECTION	ATTACHED BY
6	5/14	S.J.D.O.M.



WATER WORKS - One 24" main line (6" private corporation) under contract for delivery of water from a reservoir one and one half miles distant to the water works at 125' elevation. This water is pumped from a well located within a mile of reservoir. It is pumped to a 100' tank on a hill at 125' elevation. From this tank it is pumped to a 24" main line which runs through the town and is connected with the main line of the City of Livermore. It is pumped from this main line to a 6" main line which runs through the town and is connected with the main line of the City of Livermore. It is pumped from this main line to a 6" main line which runs through the town and is connected with the main line of the City of Livermore.

FIRE DEPT. - One 2" main line of 2500' length. One 1" main line of 2500' length. One 1/2" main line of 2500' length. One 3/4" main line of 2500' length. One 5/8" main line of 2500' length. One 1/2" main line of 2500' length. One 3/4" main line of 2500' length. One 5/8" main line of 2500' length. One 1/2" main line of 2500' length. One 3/4" main line of 2500' length. One 5/8" main line of 2500' length.



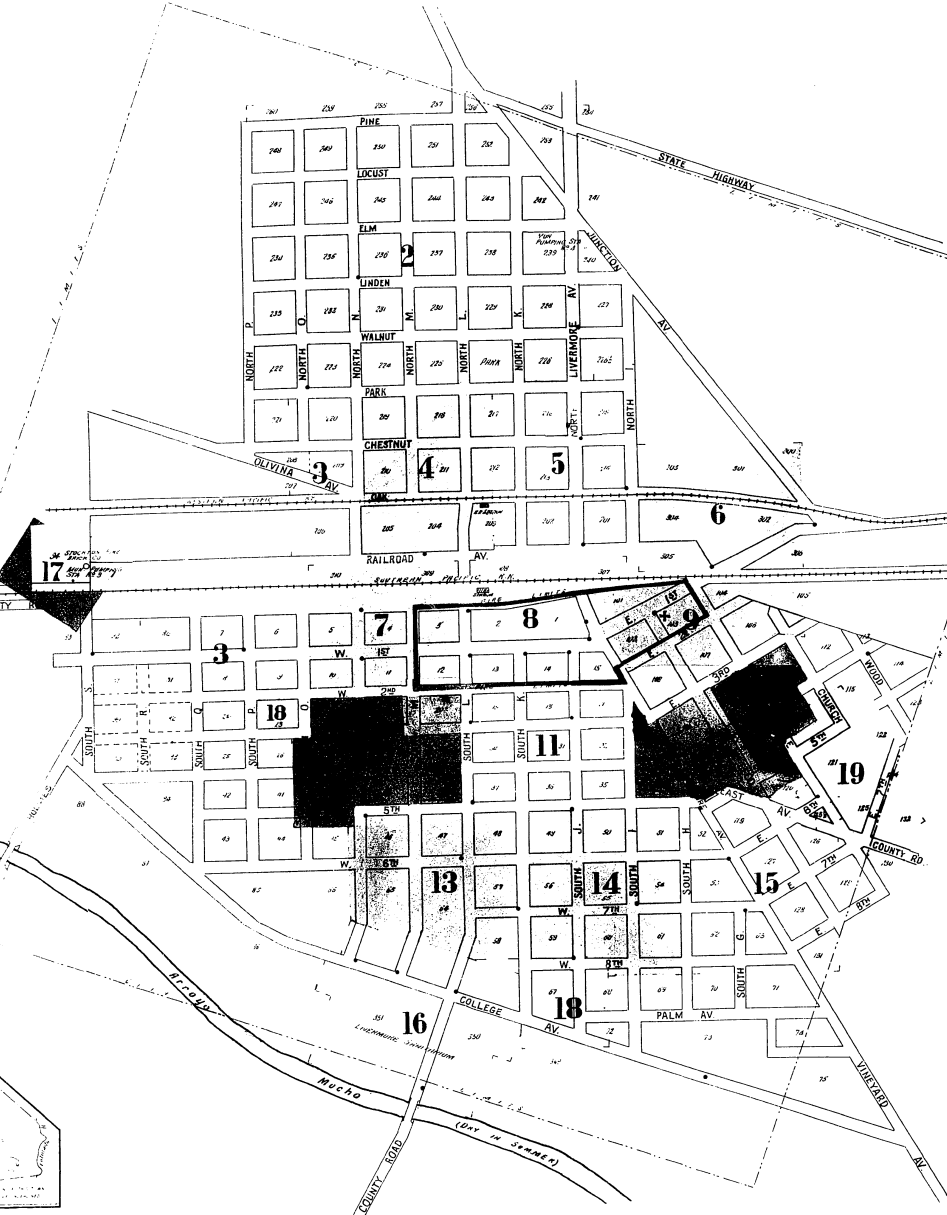
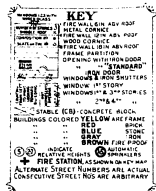
ADD'L INDEX, MAY, 1944

STREETS		SPECIALS	
No.	Street Name	No.	Special Name
1	Church Road	1	Church Road
2	College Av.	2	College Av.
3	Fifth St.	3	Fifth St.
4	Maple St.	4	Maple St.
5	State Highway	5	State Highway
6	Third St.	6	Third St.
7	Vineyard Av.	7	Vineyard Av.
8	Walnut St.	8	Walnut St.
9	W. P. R. R. Right of Way	9	W. P. R. R. Right of Way
10	Beck, Geo. & Son, Gro. W. Ho.	10	Beck, Geo. & Son, Gro. W. Ho.
11	Alameda Co. Tuberculosis Sanitarium	11	Alameda Co. Tuberculosis Sanitarium
12	Aspacner Bros. Hay W. Ho.	12	Aspacner Bros. Hay W. Ho.
13	Warner, Dr. Sanitarium	13	Warner, Dr. Sanitarium
14	Wants, C. H. Winery	14	Wants, C. H. Winery
15	W. P. R. R. Freight Shed	15	W. P. R. R. Freight Shed
16	Winniger, J. Winery	16	Winniger, J. Winery
17	Wilson, J. H. & Son, Fuel Sige.	17	Wilson, J. H. & Son, Fuel Sige.
18	Warcho, Co. Hay W. Ho. No. 3	18	Warcho, Co. Hay W. Ho. No. 3
19	Beck, Geo. & Son, Gro. W. Ho. No. 4	19	Beck, Geo. & Son, Gro. W. Ho. No. 4

INDEX

STREETS		SPECIALS	
No.	Street Name	No.	Special Name
1	Chestnut	1	Church Road
2	College Av.	2	College Av.
3	East Av.	3	Fifth St.
4	Elm	4	Maple St.
5	Fifth St.	5	State Highway
6	First E.	6	Third St.
7	Fourth E.	7	Vineyard Av.
8	Linden	8	Walnut St.
9	Maple	9	W. P. R. R. Right of Way
10	N. of W. Third to W. Fifth	10	Beck, Geo. & Son, Gro. W. Ho.
11	N. of W. Fifth to S. of W. Eighth	11	Alameda Co. Tuberculosis Sanitarium
12	N. of W. Seventh to S. of W. Tenth	12	Aspacner Bros. Hay W. Ho.
13	N. of W. Ninth to S. of W. Twelfth	13	Warner, Dr. Sanitarium
14	N. of W. Thirteenth to S. of W. Sixteenth	14	Wants, C. H. Winery
15	N. of W. Seventeenth to S. of W. Twentieth	15	W. P. R. R. Freight Shed
16	N. of W. Twenty-first to S. of W. Twenty-fourth	16	Winniger, J. Winery
17	N. of W. Twenty-fifth to S. of W. Twenty-eighth	17	Wilson, J. H. & Son, Fuel Sige.
18	N. of W. Twenty-ninth to S. of W. Thirty-second	18	Warcho, Co. Hay W. Ho. No. 3
19	N. of W. Thirty-third to S. of W. Thirty-sixth	19	Beck, Geo. & Son, Gro. W. Ho. No. 4

*Indicates one side of street shown only.



CORRECTION RECORD. Table with columns: REV. NO., DATE OF CORRECTION, ATTACHED BY. One entry is visible: REV. NO. 6, DATE OF CORRECTION 5/14, ATTACHED BY S.F.D. 27.

WATER WORKS: ONLY WATER MAINS CO. (IN PRIVATE POSSESSION) WHICH ARE A SOURCE OF CONTAMINATION... FIRE DEPT.: POLICE DEPT.: S. P. R. R. RIGHT OF WAY: STREET LIGHTS: BANNERS: LEVEL LIGHTS: ETC.

INDEX

INDEX table with columns: SHEETS, STREETS, SHEET. Lists street names and their corresponding sheet numbers. For example: 'I, South - E. side, N. of W. Third to W. Fifth' is on sheet '12'.

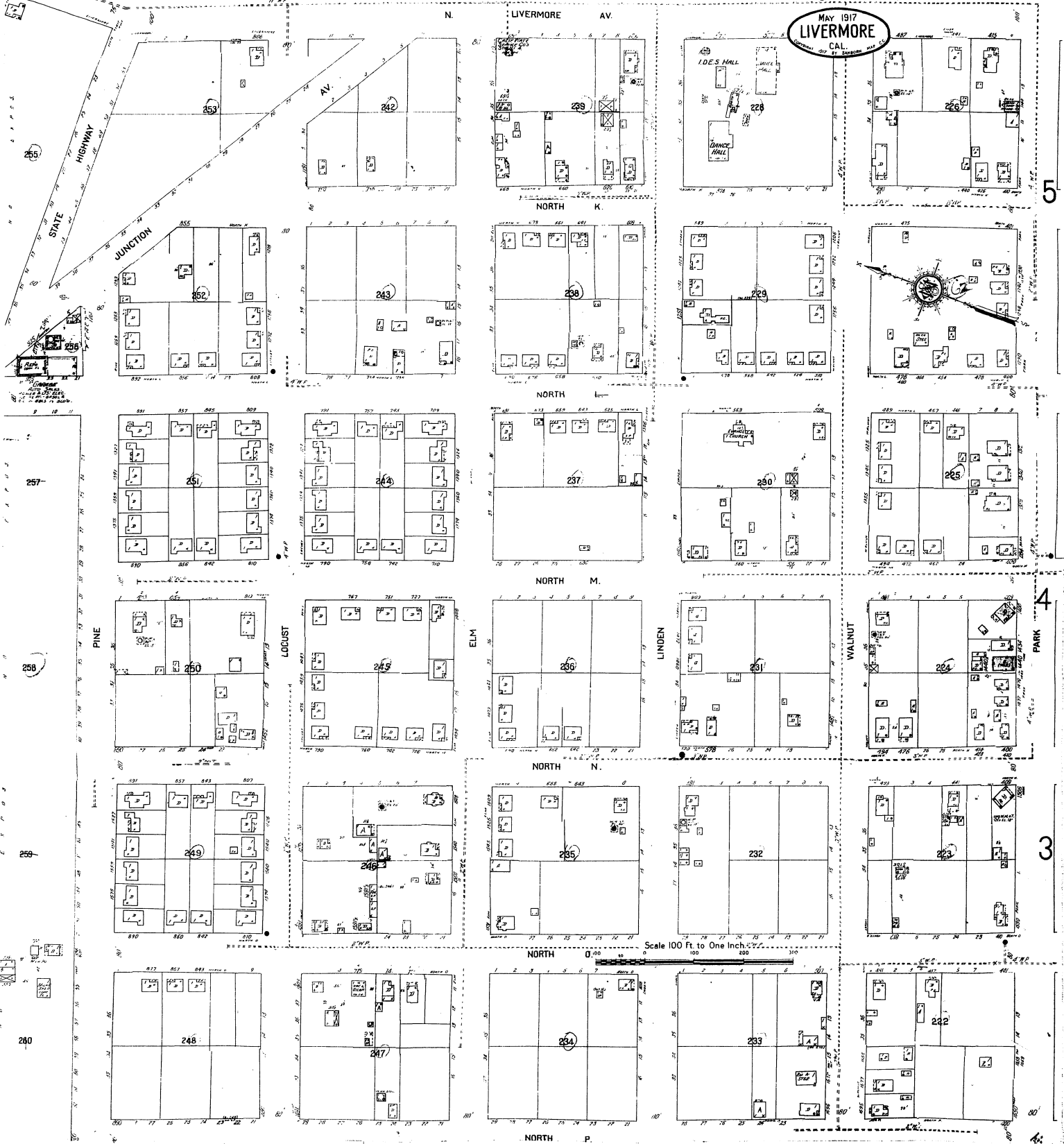
*Indicates one side of street shown only.

LIVERMORE, CAL.

48
C.A.T. - 5.1.9

SCALE: 100 FT. TO 1 INCH.

2



MAY 1917
LIVERMORE
CAL

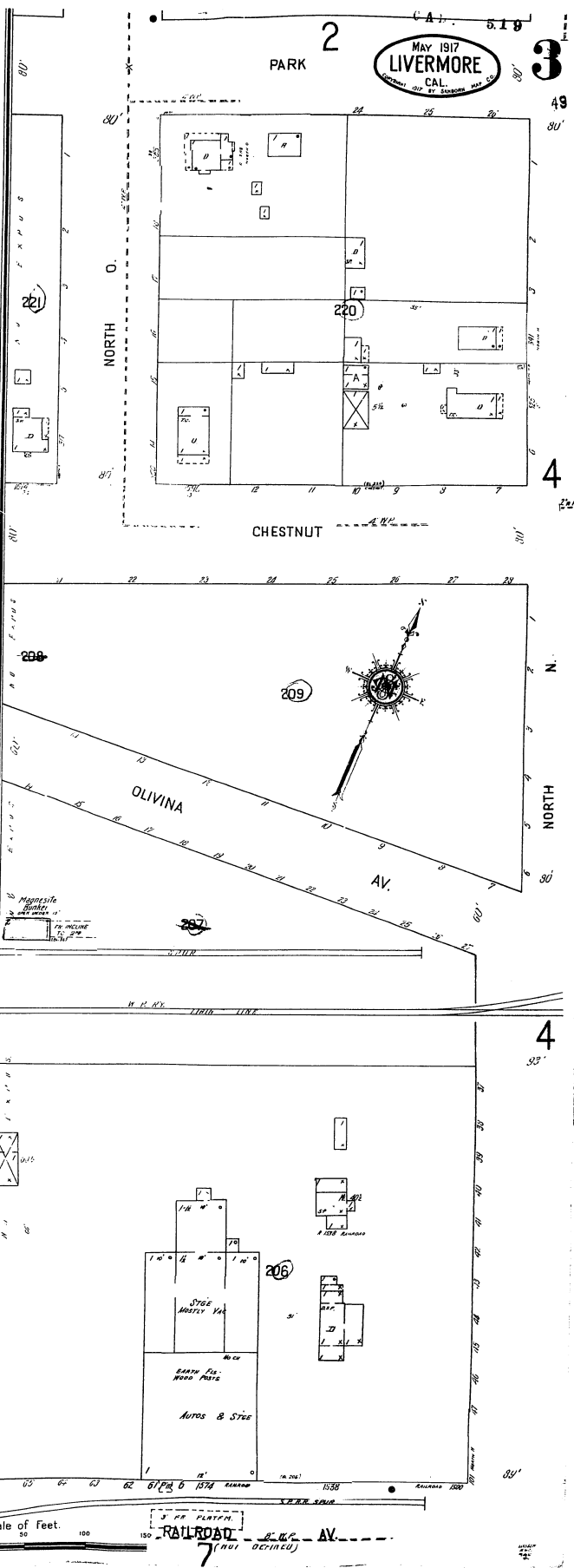
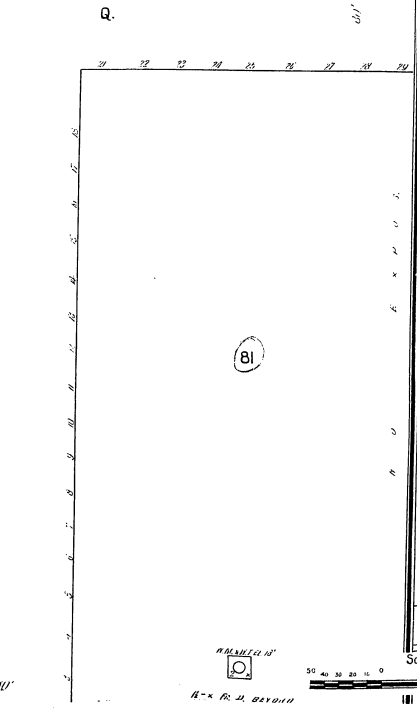
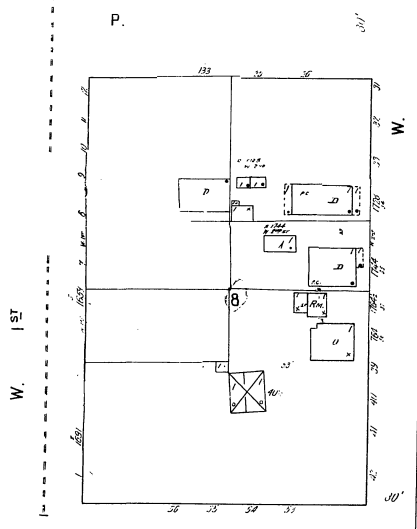
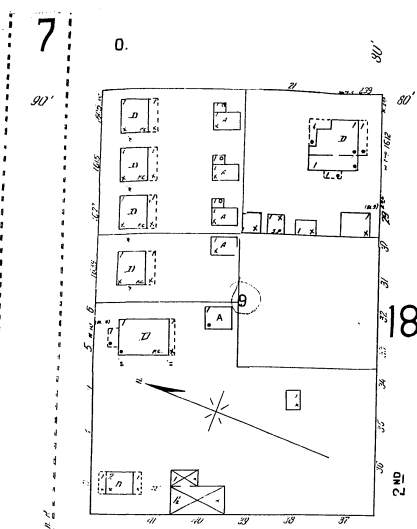
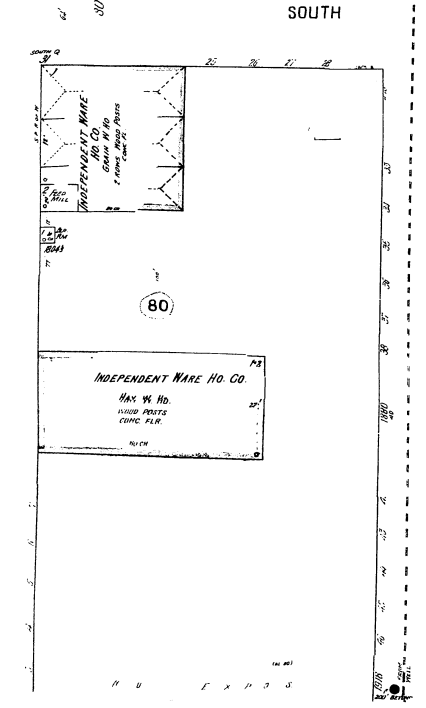
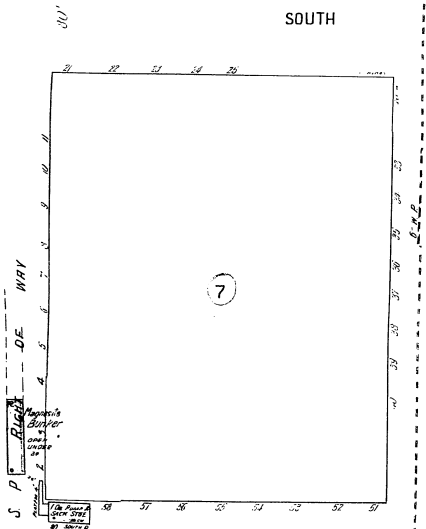
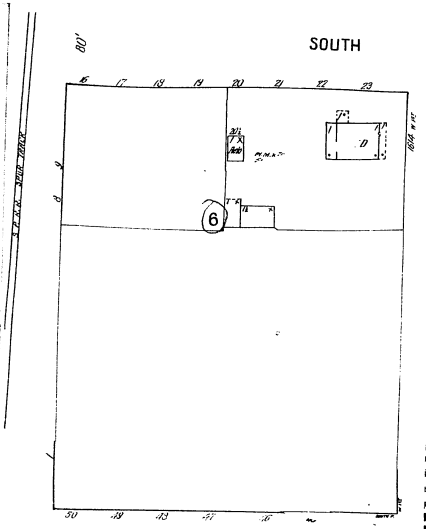
5

4

3

6

Scale 100 Ft to One Inch.



3

49

4

4

RECORDED

RAILROAD AV.

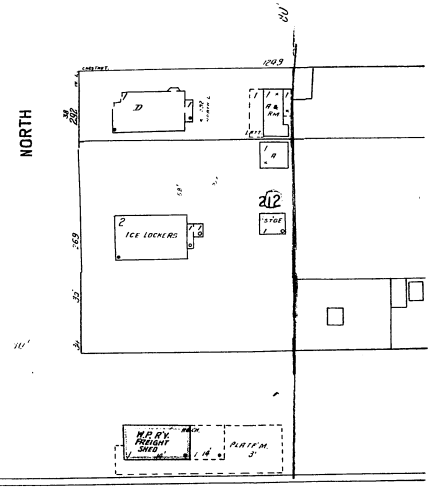
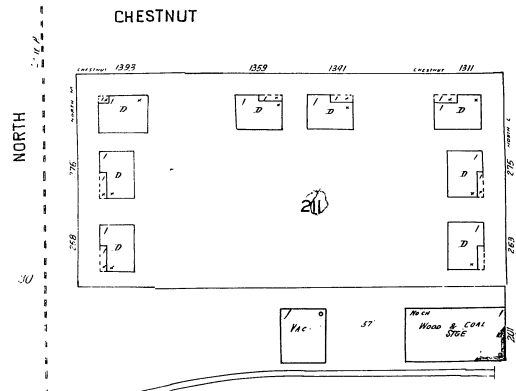
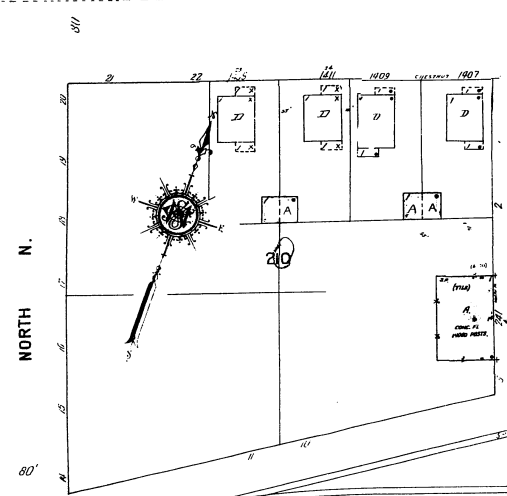
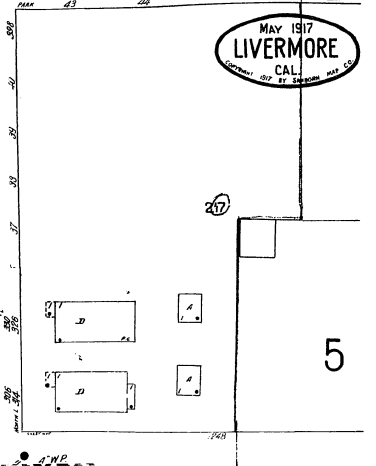
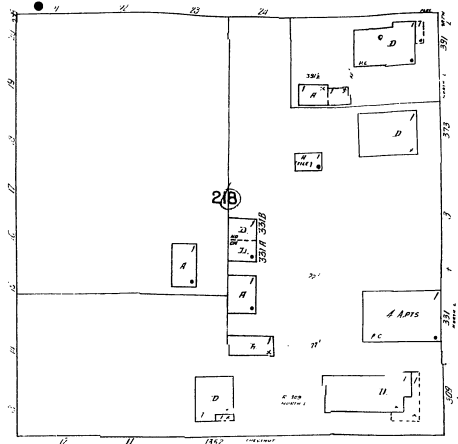
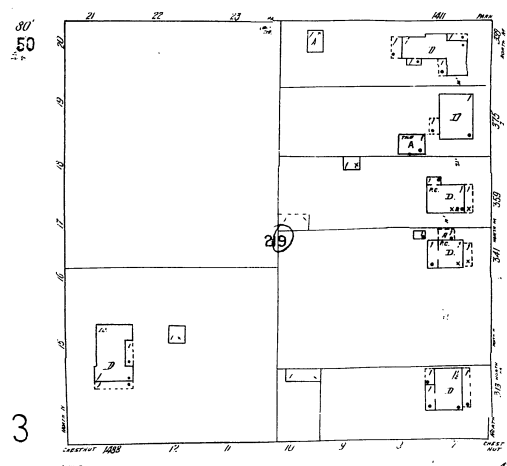
5.19

PARK

2

4

MAY 1917
LIVERMORE
CAL.
[RECORDED - 1917 BY SHERMAN 1917 C]

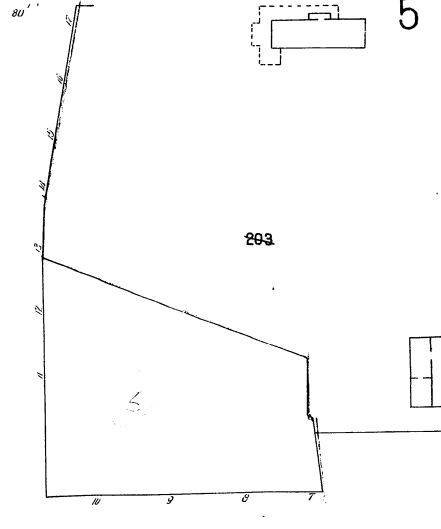
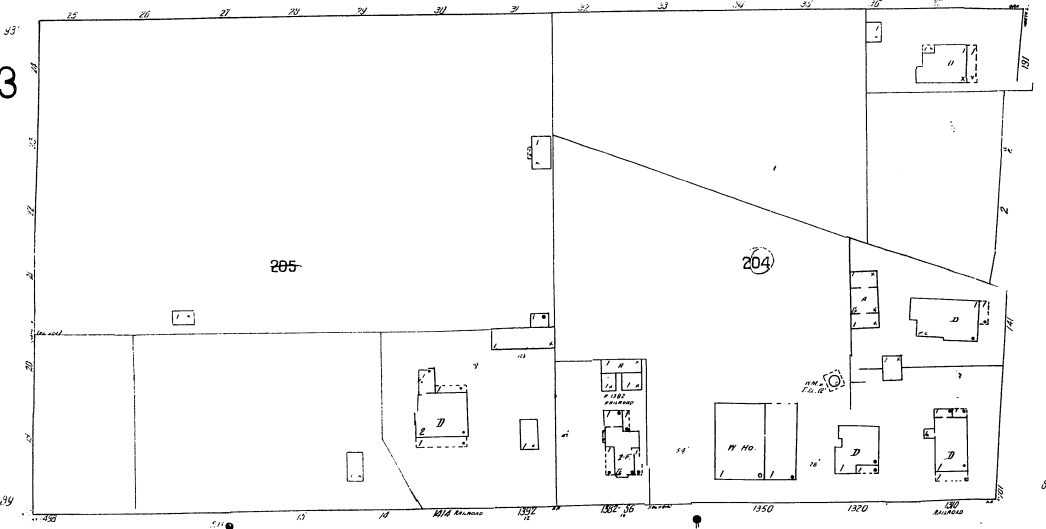


CHESTNUT

NORTH

NORTH

OAK (NOT DEFINED)



RAILROAD

AV. (NOT DEFINED)

Scale of Feet. 0 50 100 150

8

2

PARK

AV.

N. LIVERMORE

NORTH

6

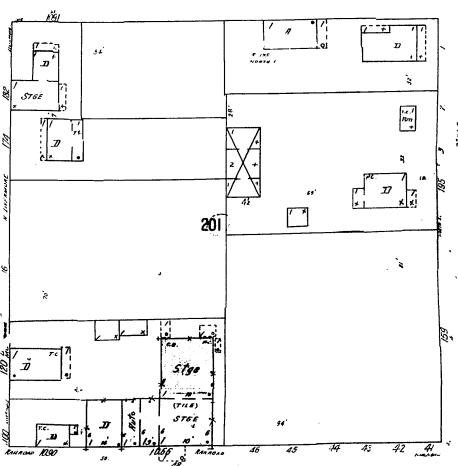
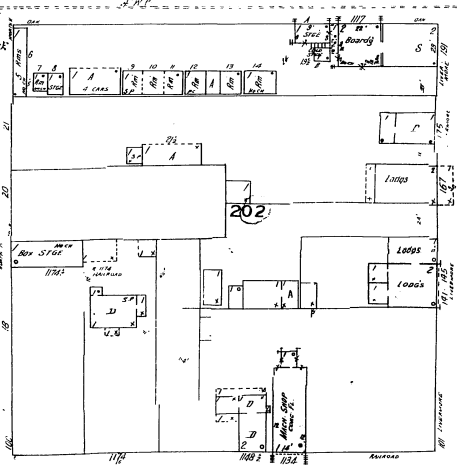
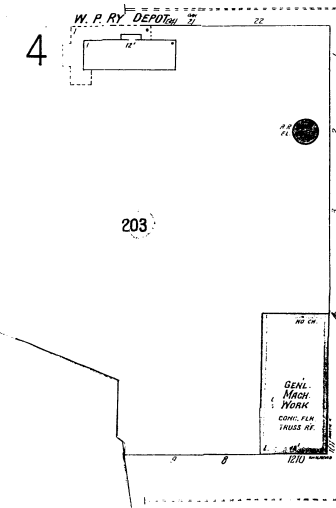
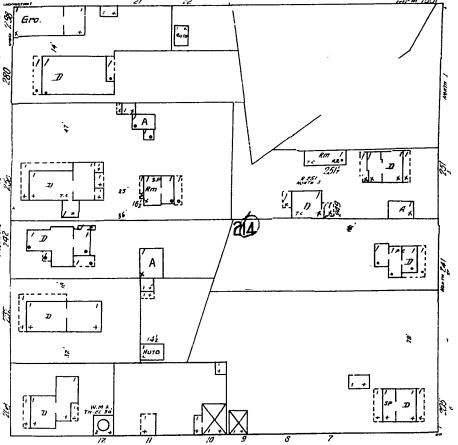
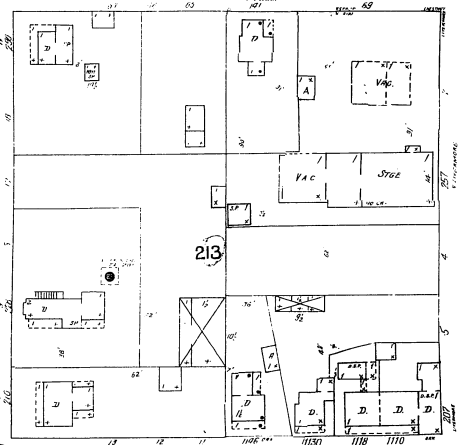
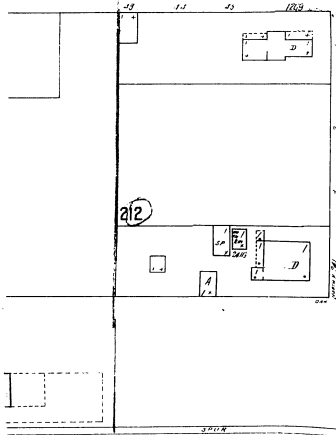
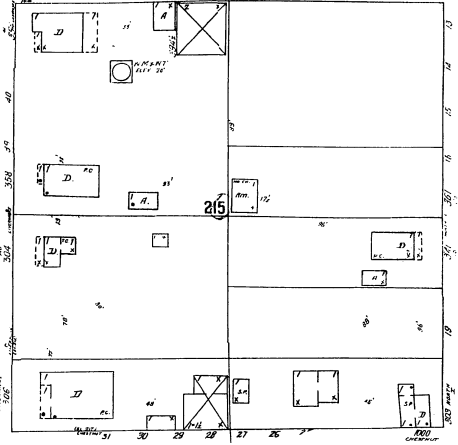
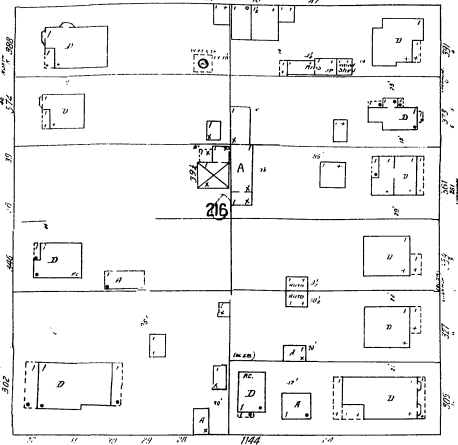
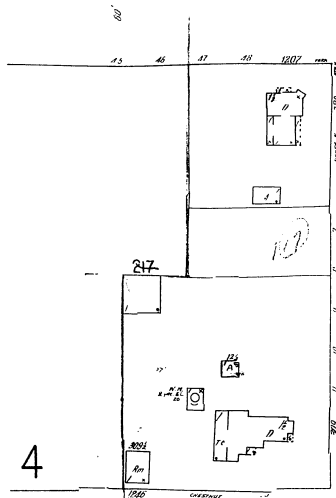
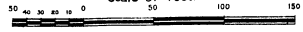
CHESTNUT

OAK

RAILROAD
(NOT DEFINED)

8

Scale of Feet.

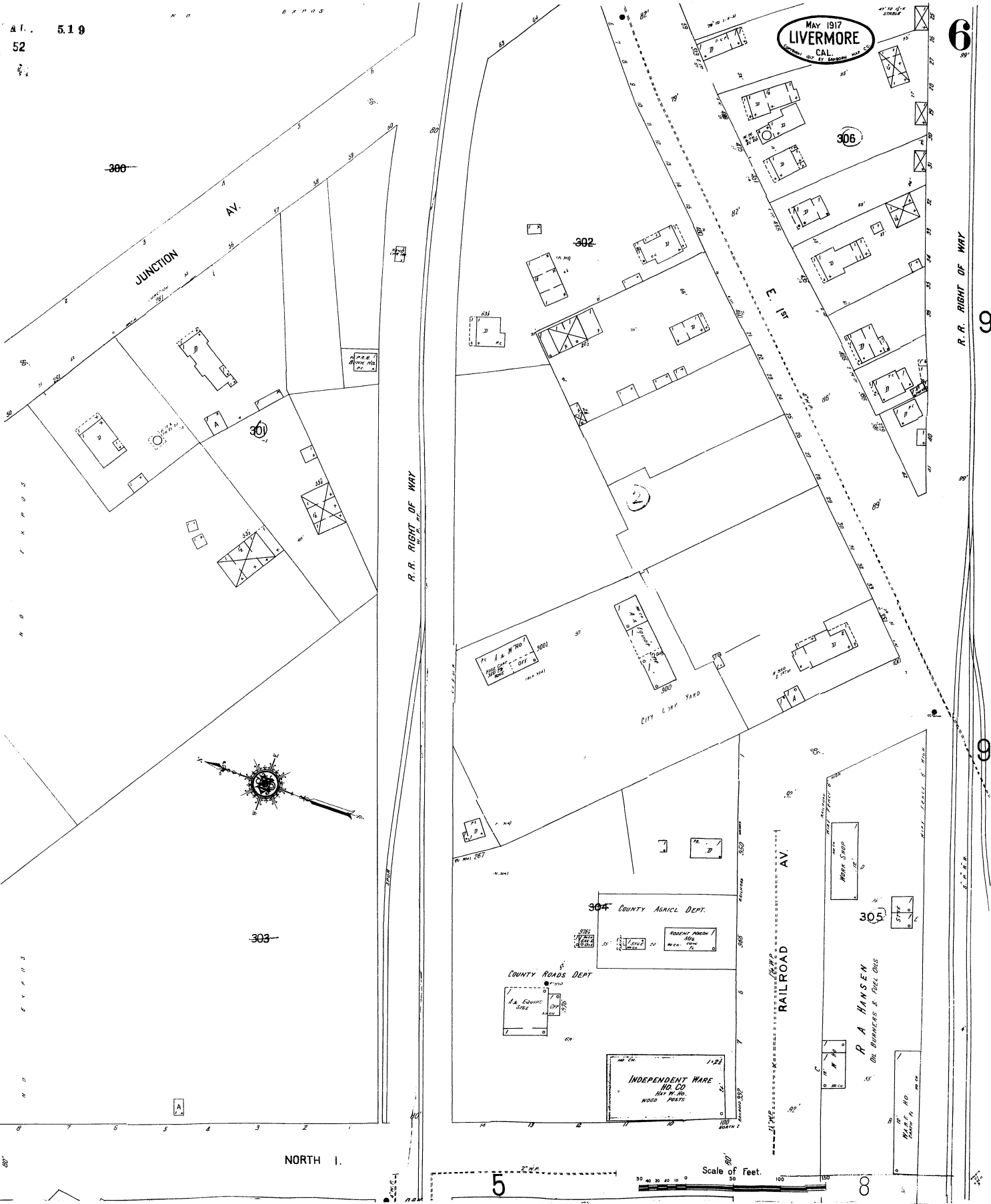


W. P. RY. DEPOT

GENL. MACH. WORK
CONC. PLK.
PAVING OF

MAY 1917
LIVERMORE
CAL.
(RECORDED BY ST. FRANCISCO MAP CO.)

6



300

JUNCTION AV.

302

306

E 1st St

R.R. RIGHT OF WAY

R.R. RIGHT OF WAY

CITY LAKE YARD

304 COUNTY AGRIC. DEPT.

COUNTY ROADS DEPT.

INDEPENDENT WARE HO. CO.

305

P. A. HANSEN
OIL BURNERS & FUEL OILS

RAILROAD AV.



303

NORTH 1.

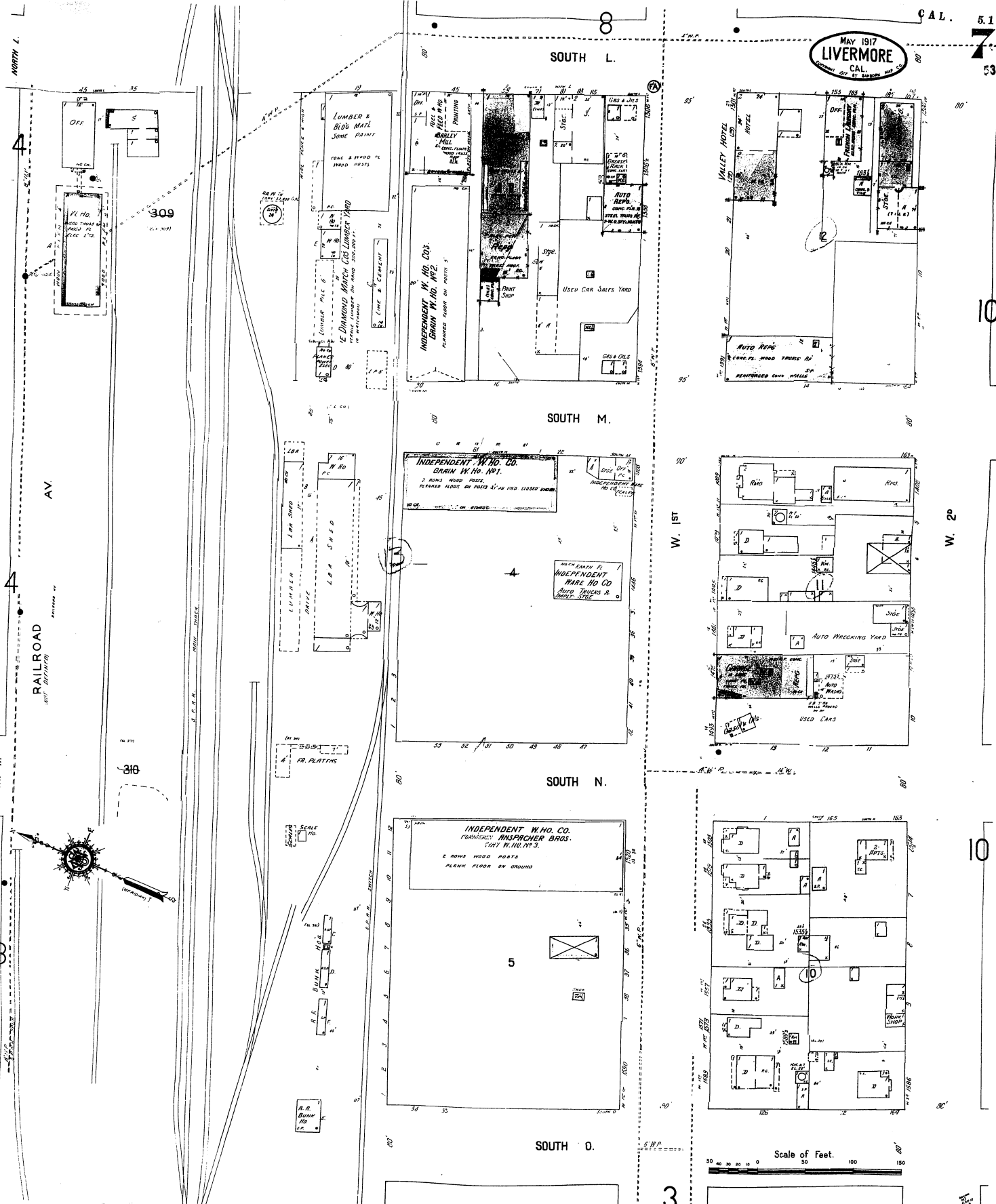
5

Scale of Feet.

CO

CO

8



4

AV

3

SOUTH L.

SOUTH M.

SOUTH N.

SOUTH O.

W. 1st

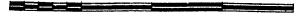
W. 2nd

3

10

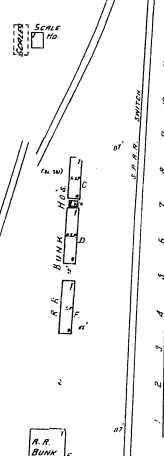
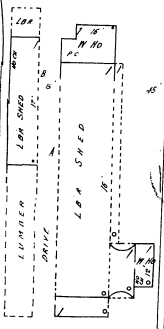
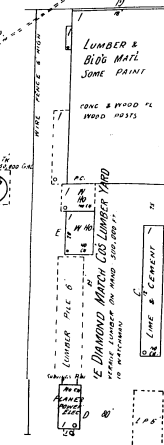
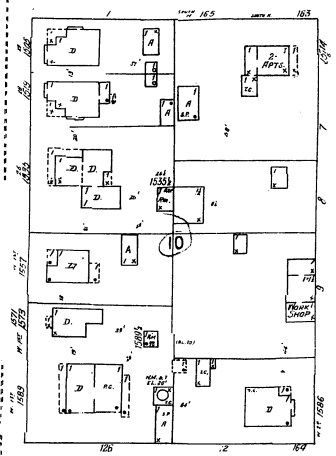
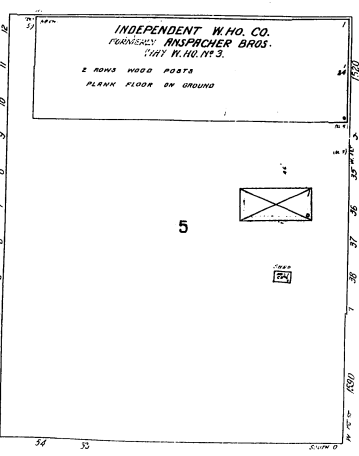
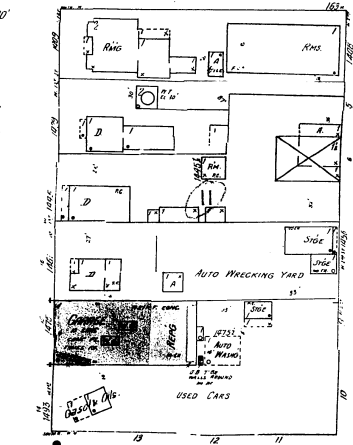
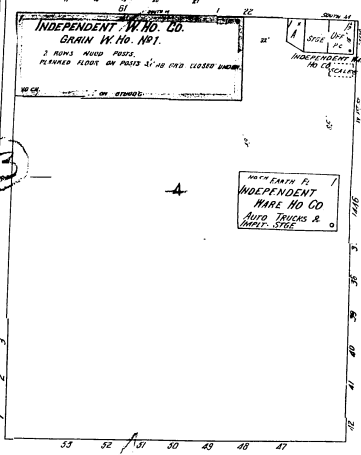
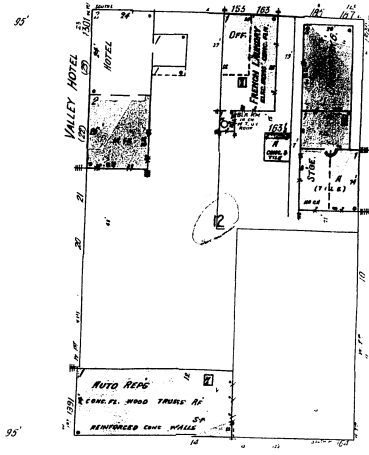
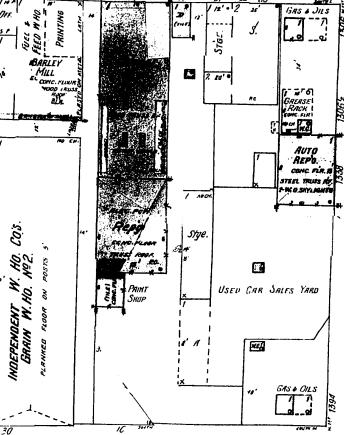
10

Scale of Feet.



309

310



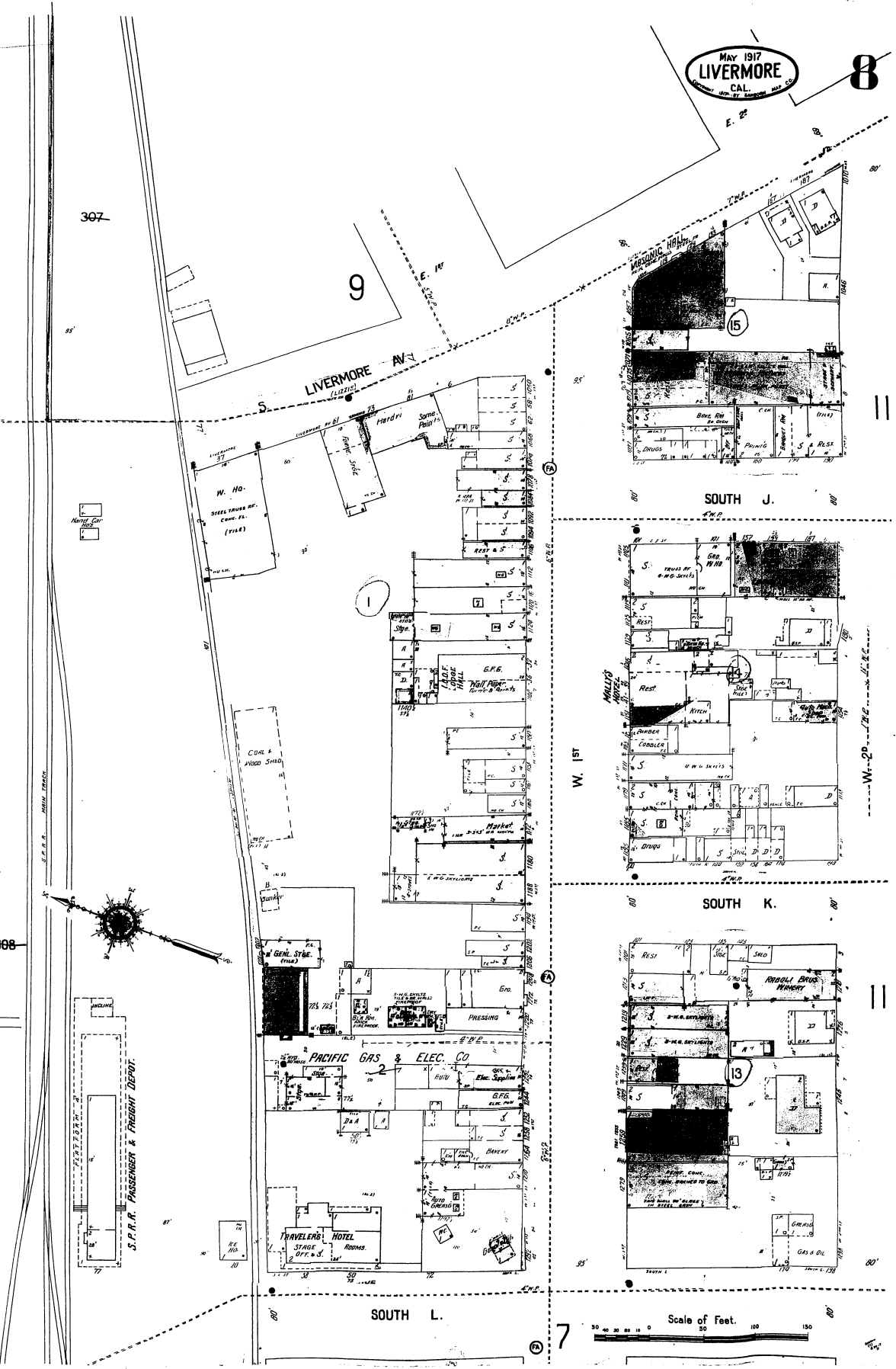
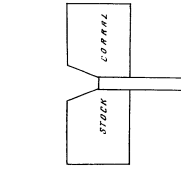
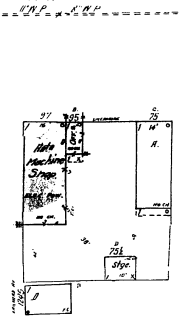
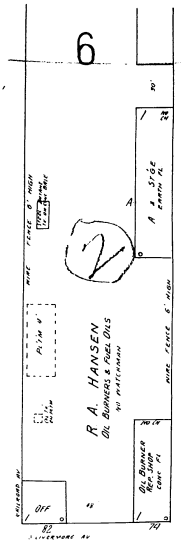
RAILROAD

NORTH K.

4

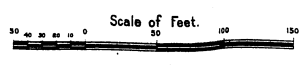
3

CAT. 519
54
5
5
4
NORTH L.
NORTH K.
NORTH J.
LIVERMORE AV.
AV.
RAILROAD
(NOT DESIGNATED)



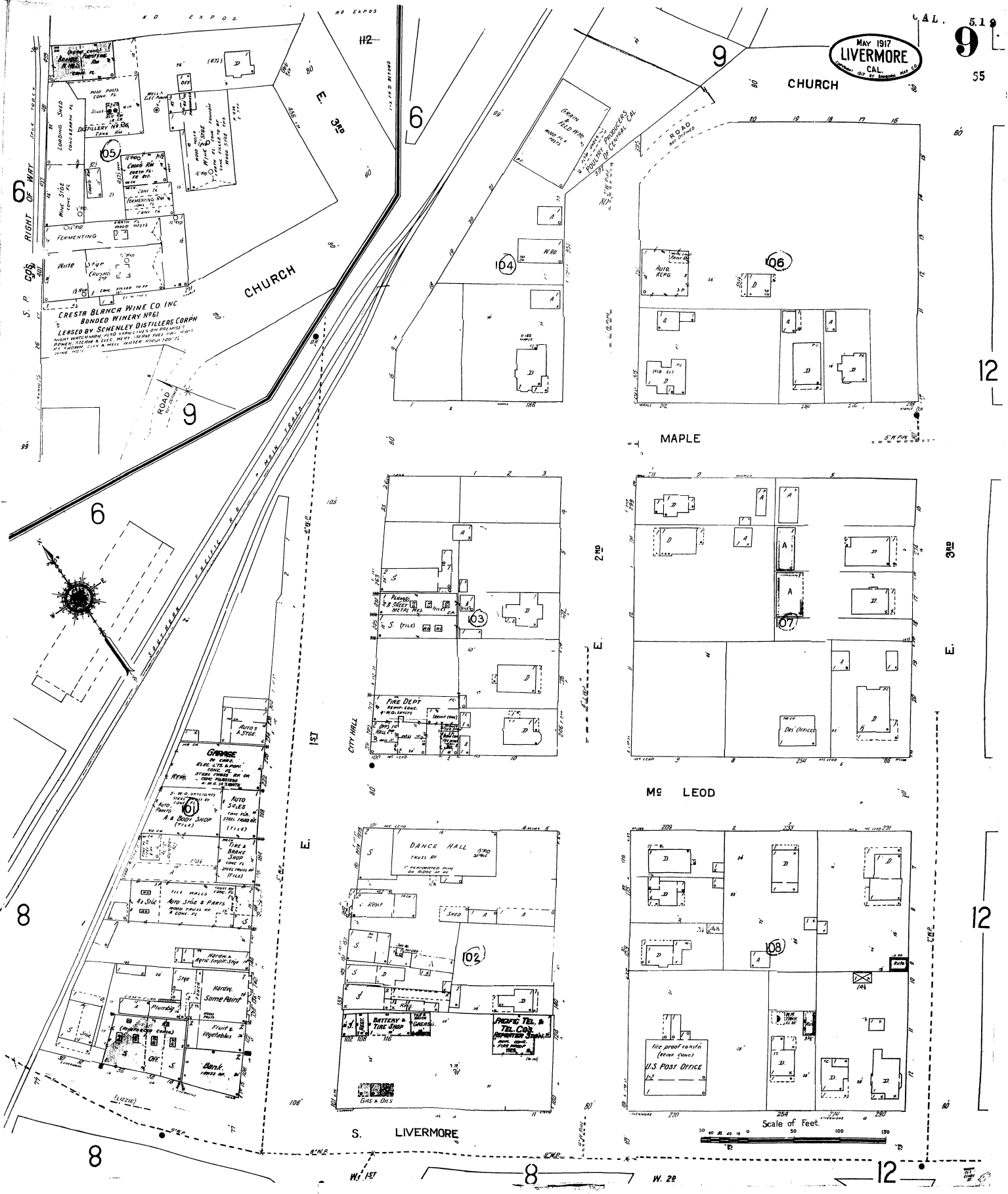
MAY 1917
LIVERMORE
CAL.

8



MAY 1917
LIVERMORE
CAL.
COUNTY OF ST. BERNARD, MAY 1917

5.1
9
55



CHURCH

CHURCH

MAPLE

M^o LEOD

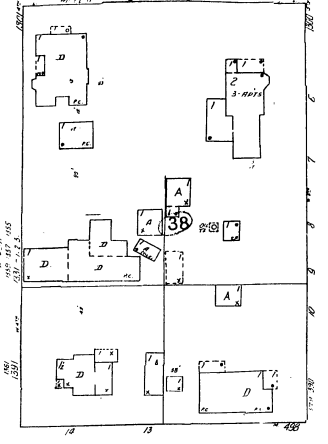
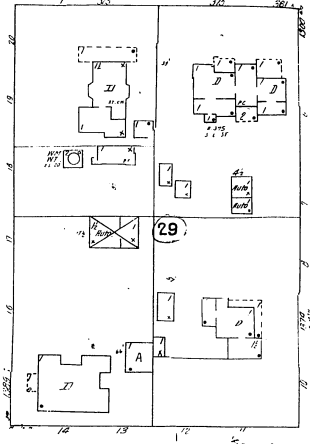
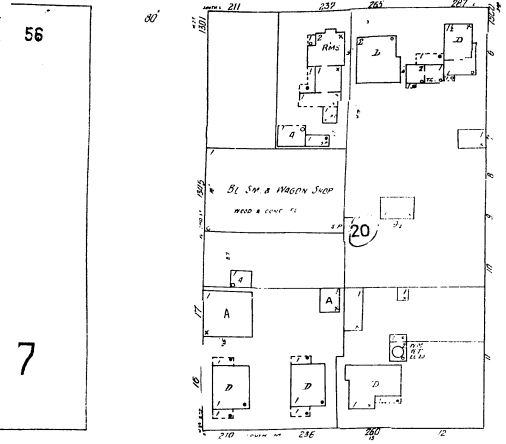
S. LIVERMORE

Scale of Feet

W. 22

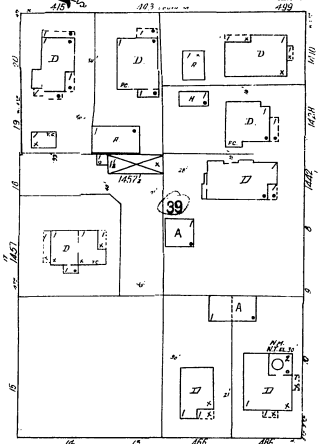
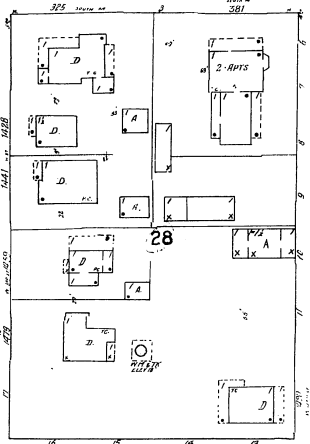
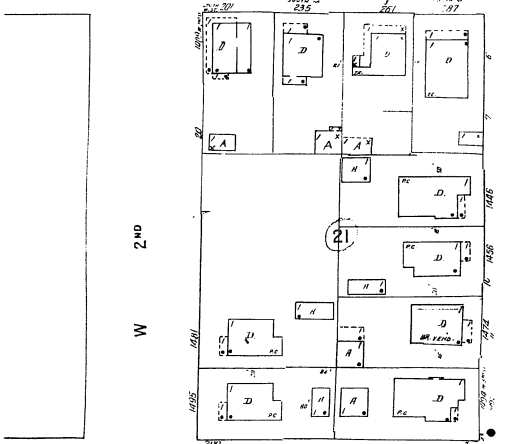
12

MAY 1917
LIVERMORE
CAL.
SHEET NO. 107 OF 100 SHEETS



7

13

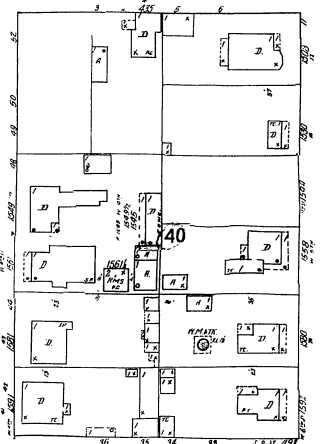
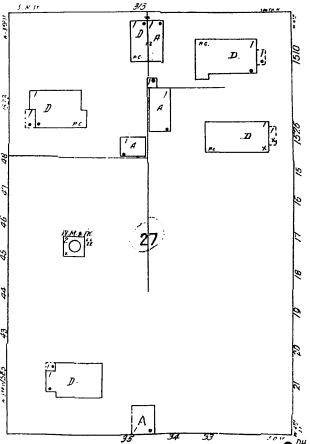
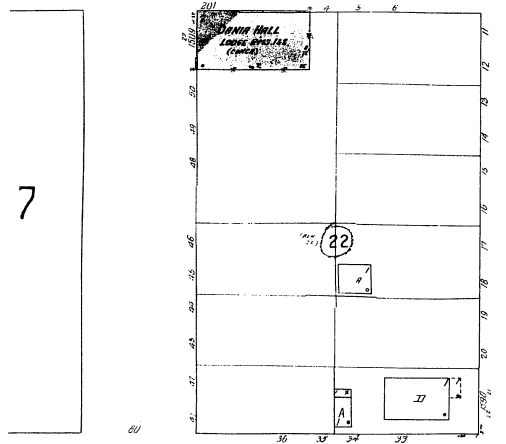


W 2ND

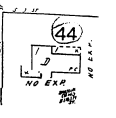
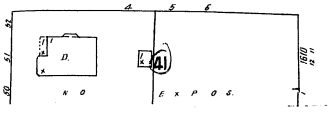
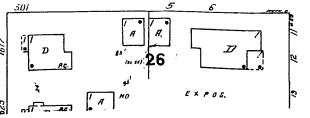
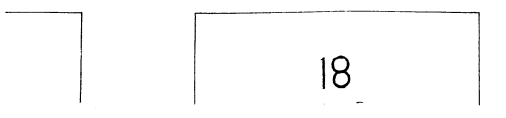
W 3RD

W 4TH

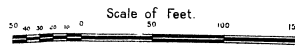
W 5TH



7

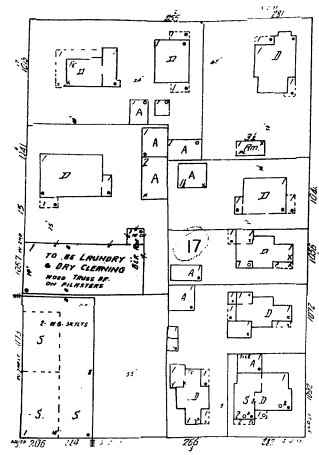


18



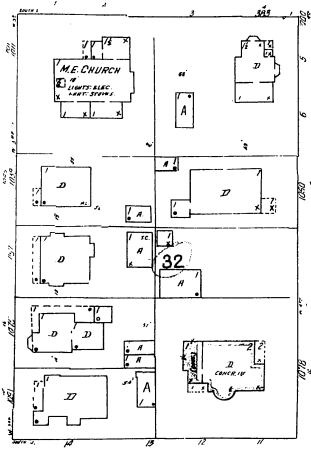
S. LIVERMORE AV.
(100' W)

8



SOUTH I

12

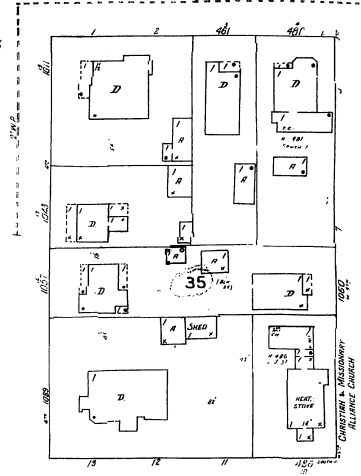


SOUTH J

5.10

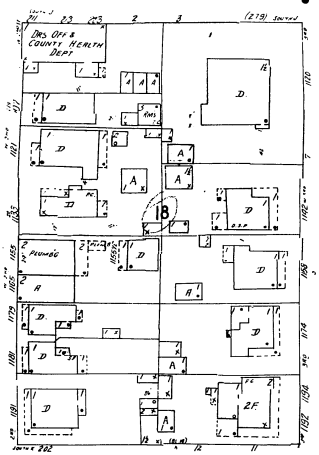
11

57

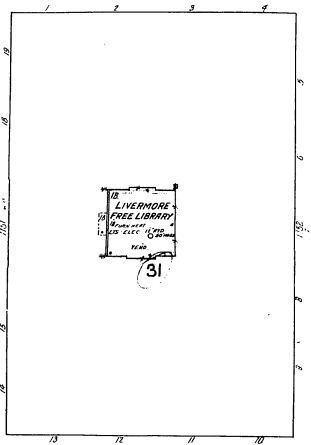


MAY 1917
LIVERMORE
CAL.
CITY OF LIVERMORE MAY 20

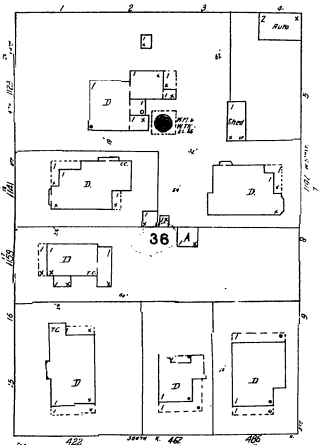
W. 2ND



W. 3RD



W. 4TH

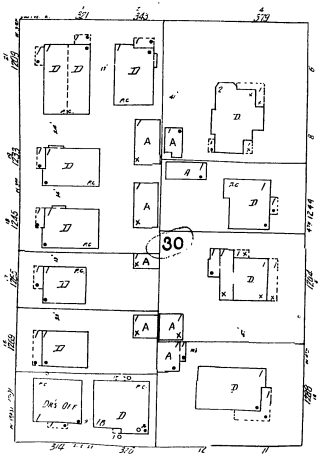


W. 5TH

14

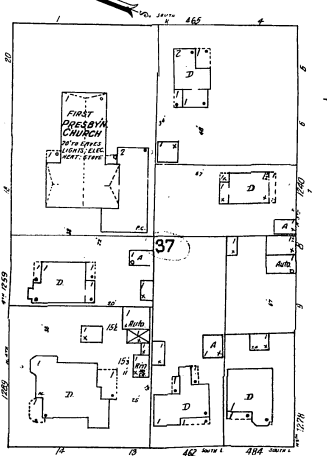
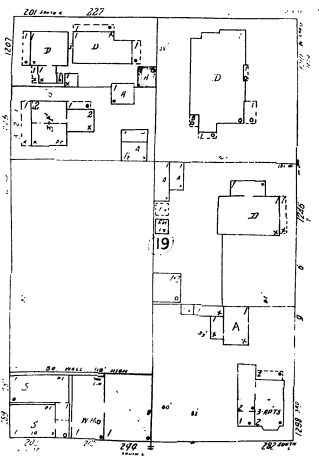
SOUTH K

10



SOUTH L

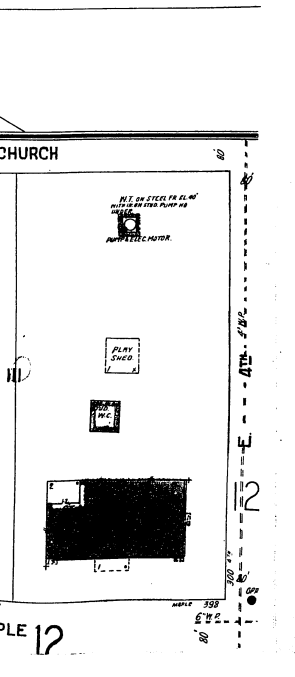
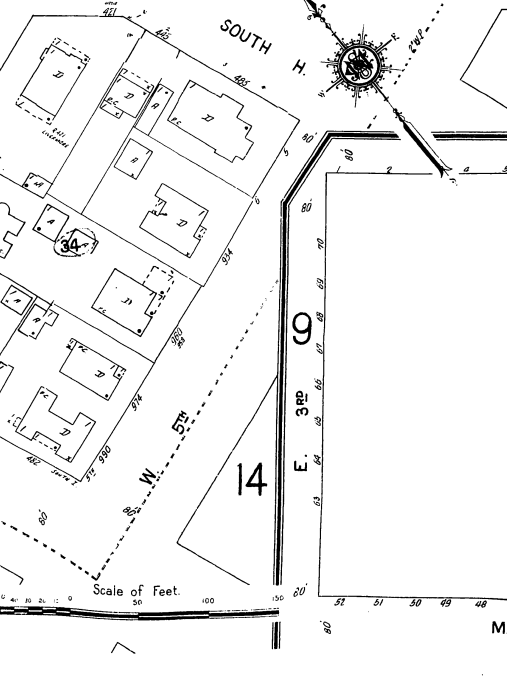
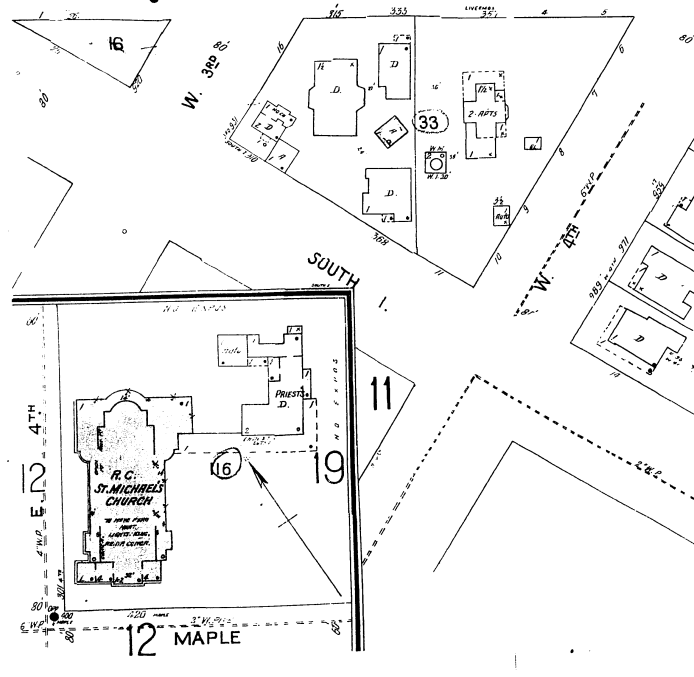
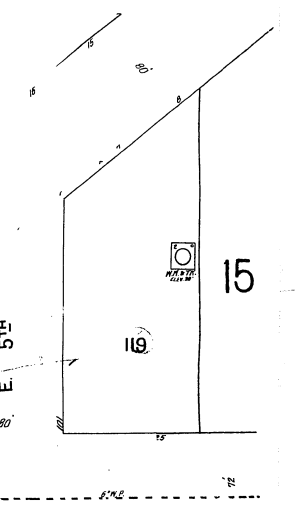
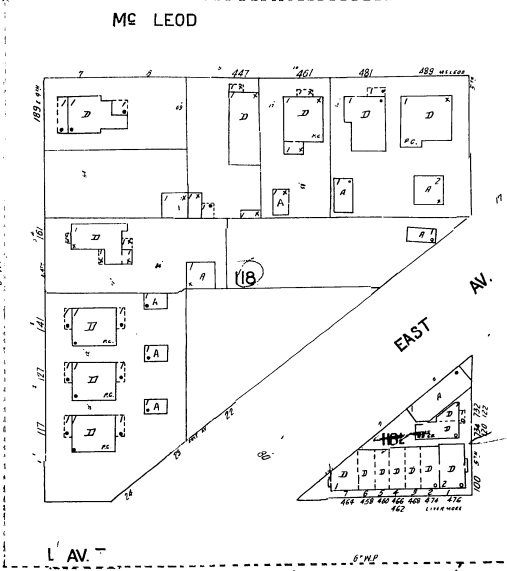
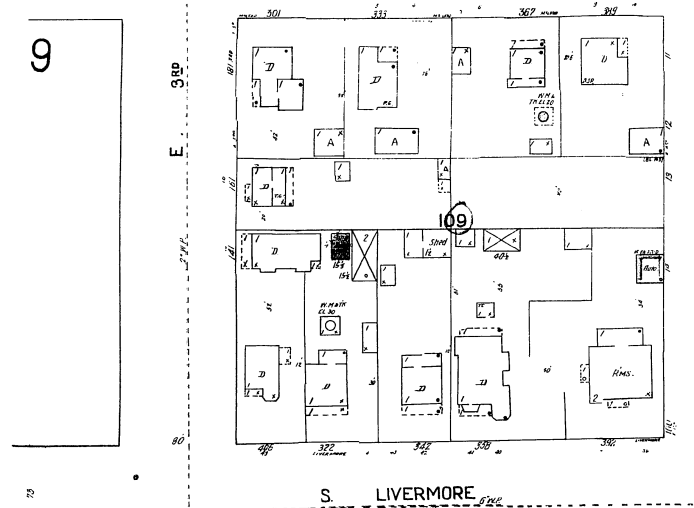
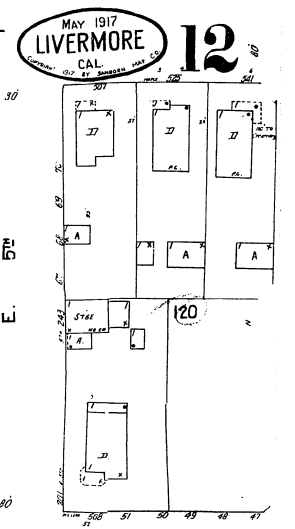
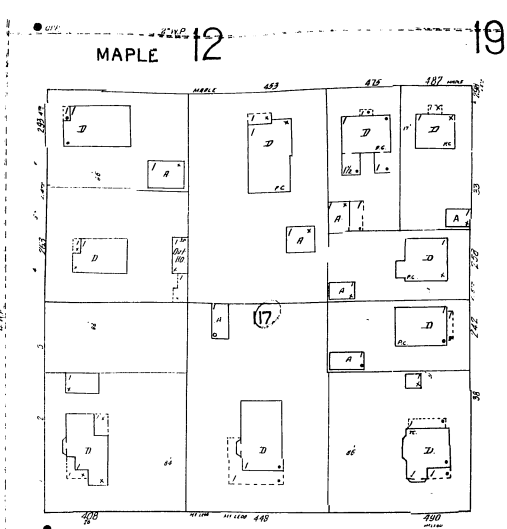
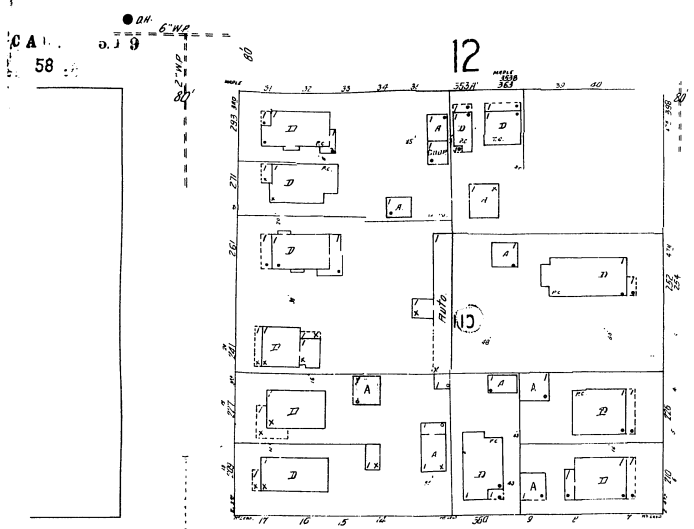
10



13



Scale of Feet.
0 50 100 150



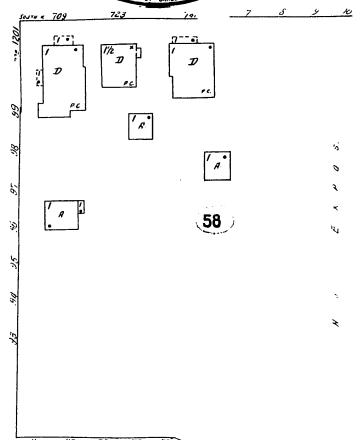
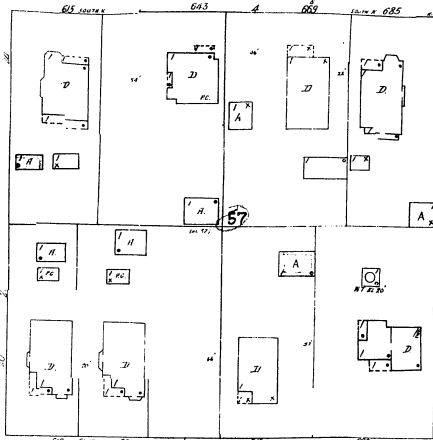
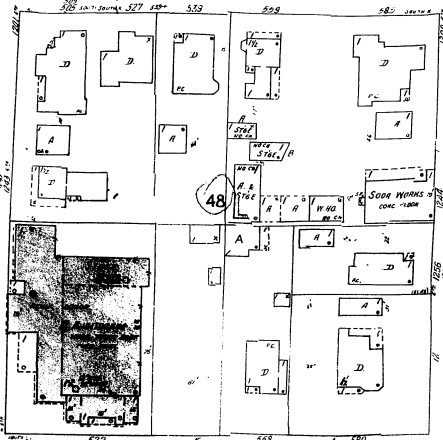
MAY 1917
LIVERMORE
CAL.



Scale of Feet.

SOUTH K 14

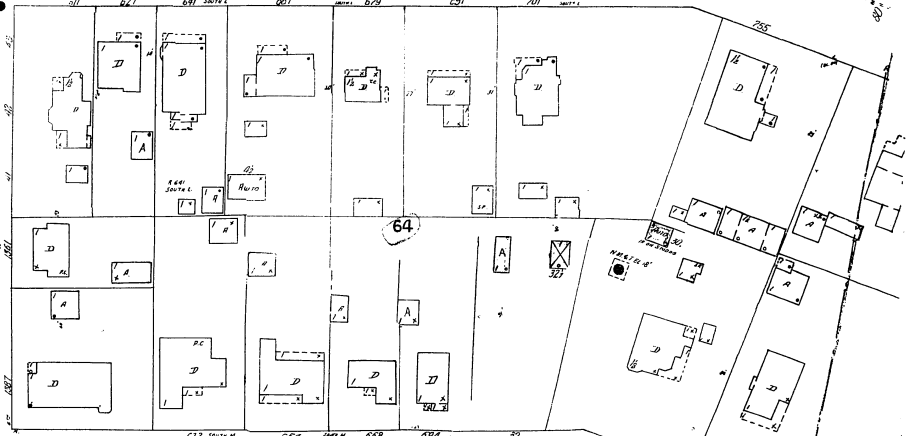
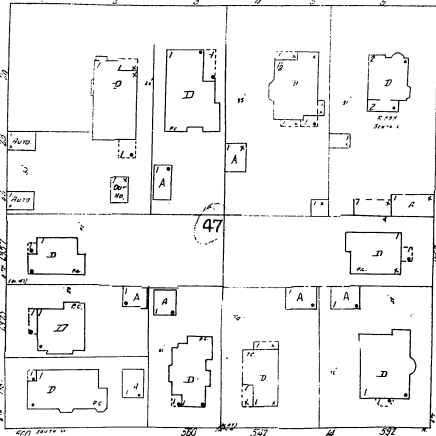
W. 7TH



VETERANS MEMORIAL

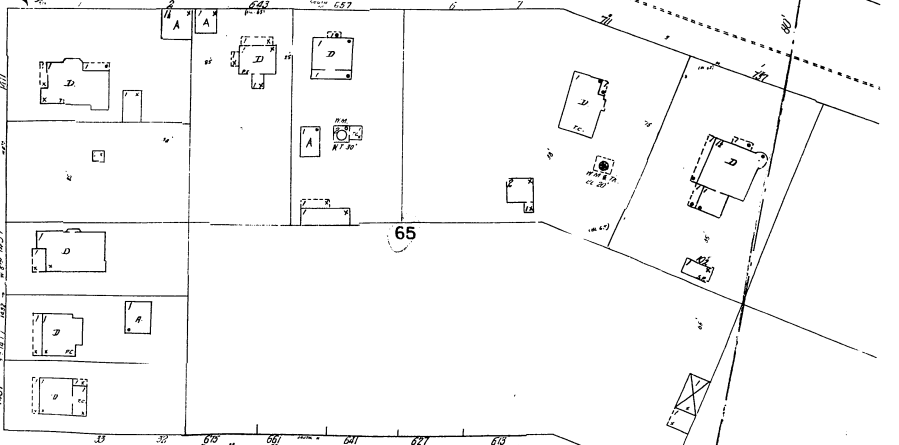
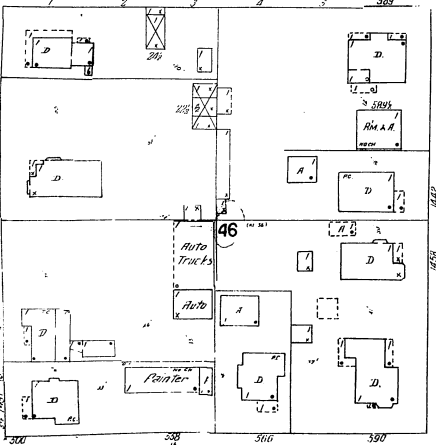
SOUTH L

W. 6TH



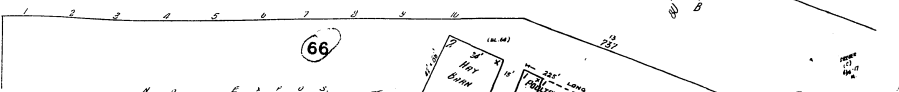
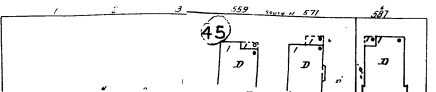
SOUTH M

16



SOUTH N

Scale of Feet.



11

10

5TH

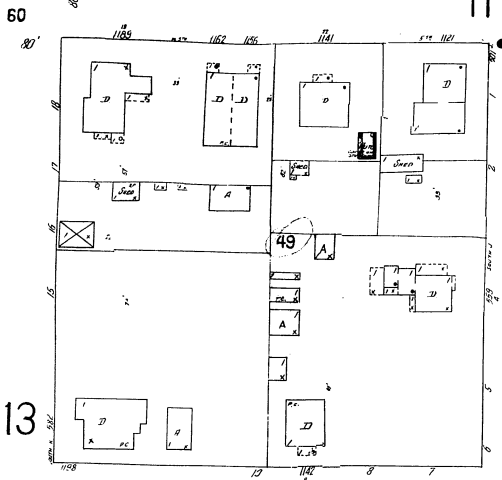
W. 5TH

10



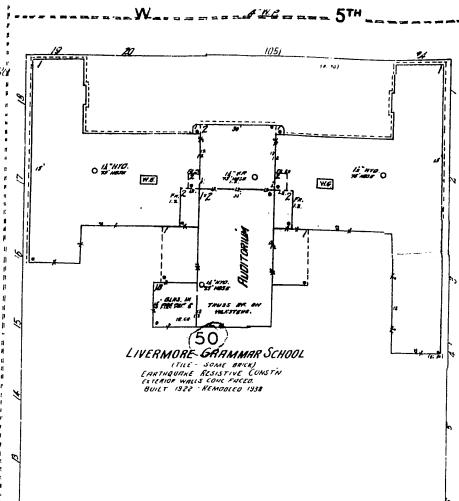
30'

CAL. 5.19



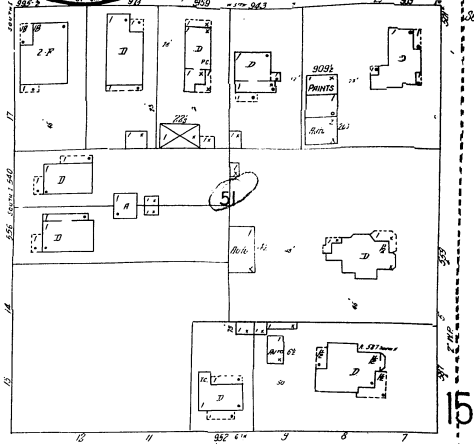
13

11



LIVERMORE GRAMMAR SCHOOL

MAY 1917 LIVERMORE CAL.

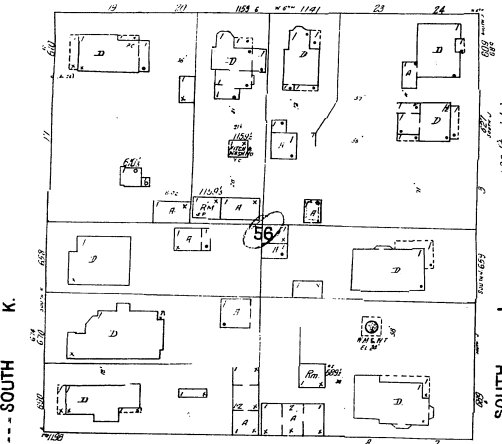


12

14

W. 6TH

W. 6TH

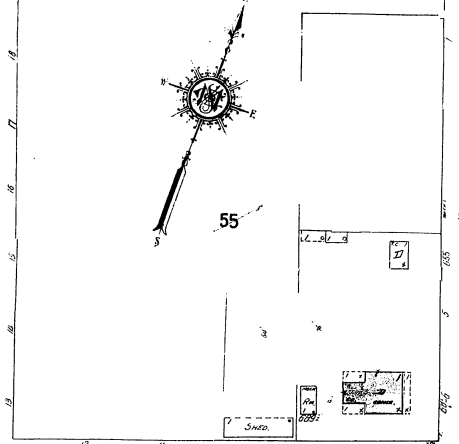


K.

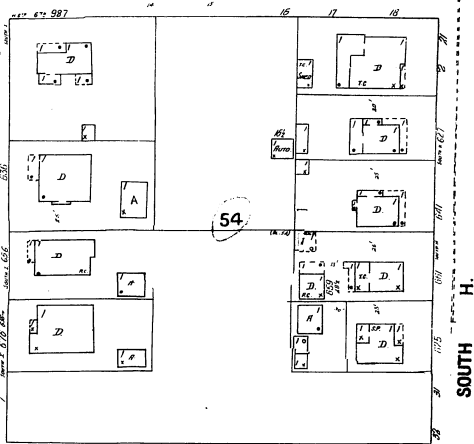
SOUTH

J.

SOUTH



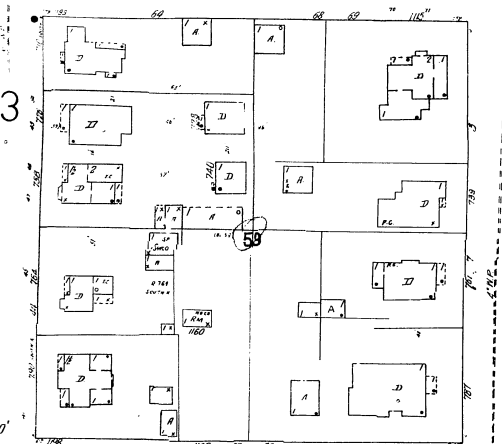
55



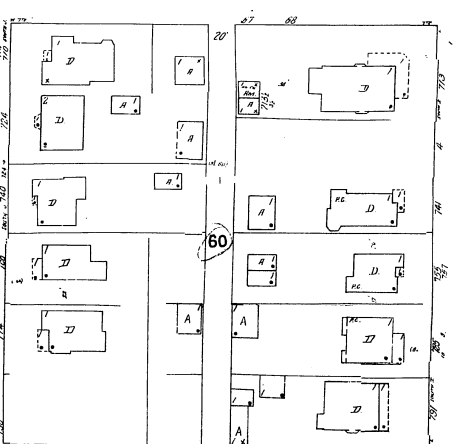
H.

SOUTH

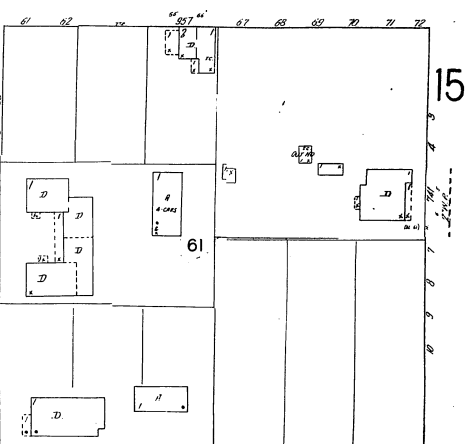
W. 7TH



13

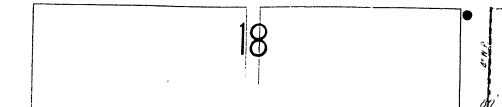


60

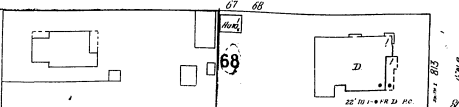


15

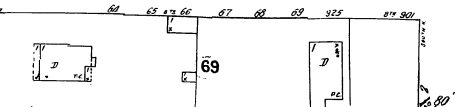
W. 8TH



18



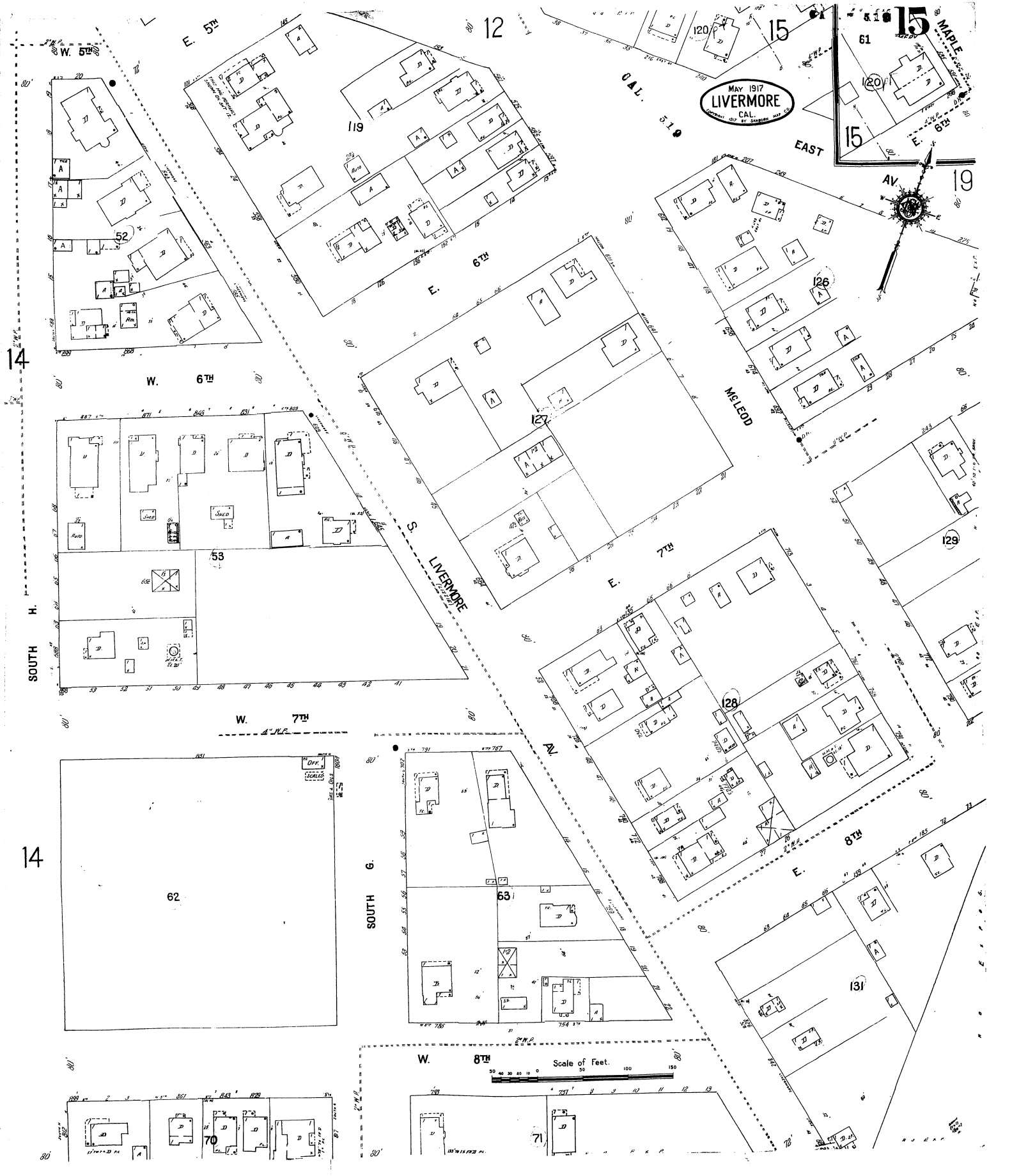
68



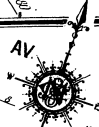
69

Scale of Feet.





MAY 1917
LIVERMORE
CAL.
CORRECTED BY SURVEY MAY 20



Scale of Feet.
0 10 20 30 40 50 60 70 80 90 100 110 120 130 140 150

14

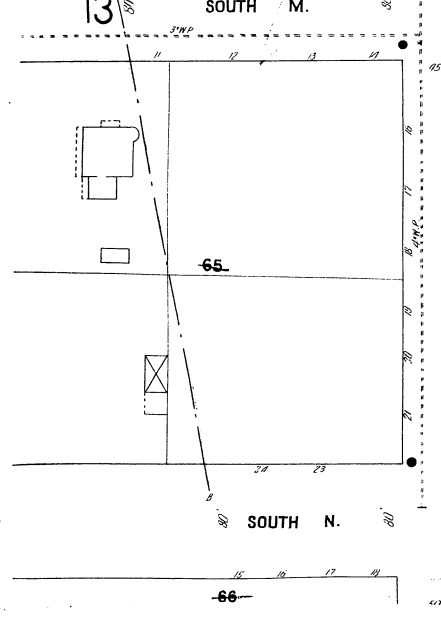
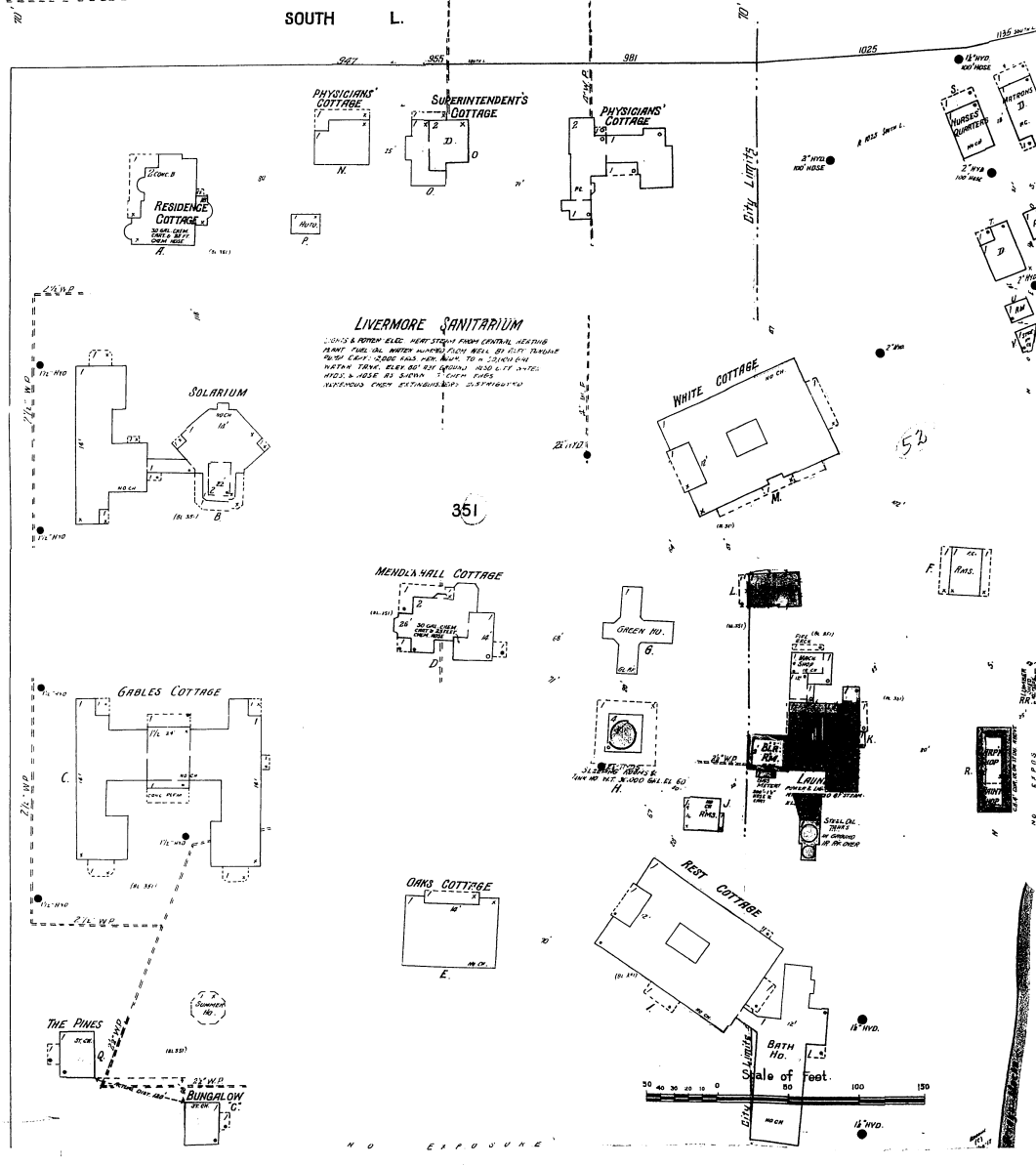
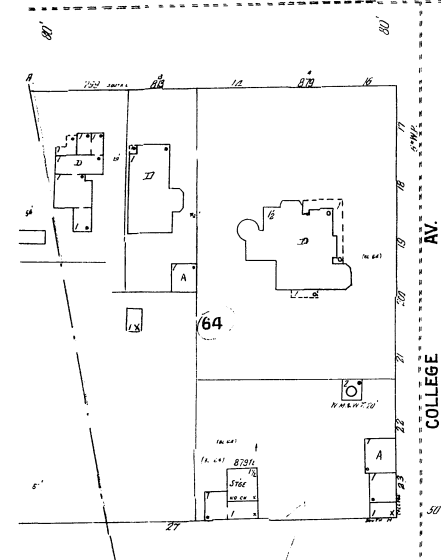
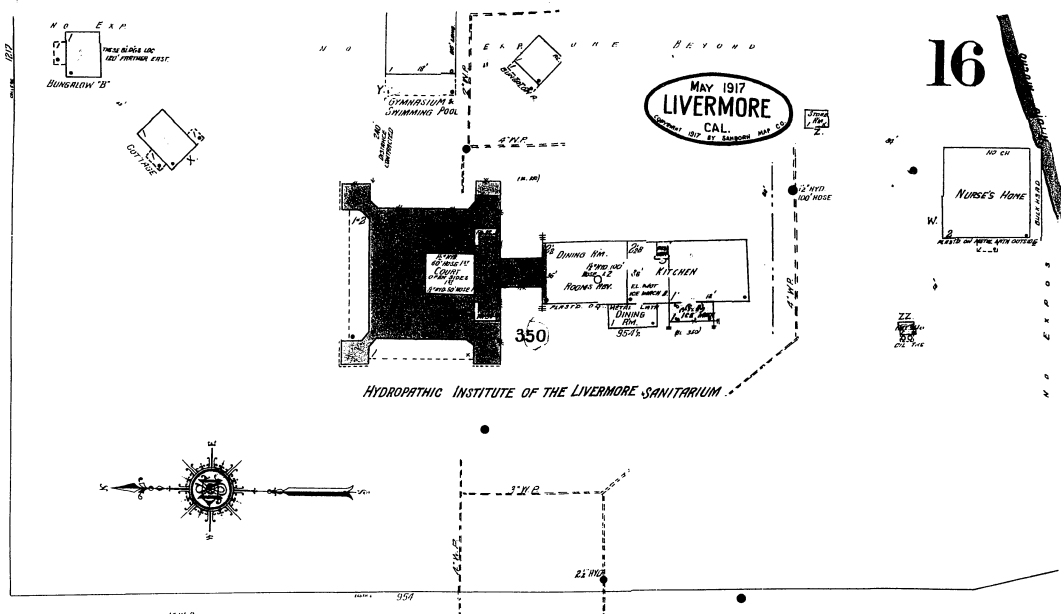
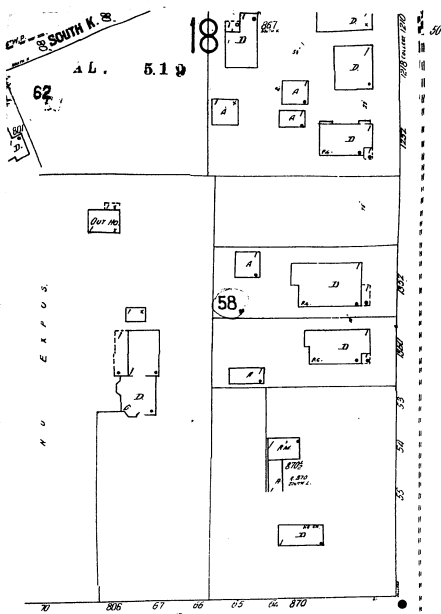
15

19

SOUTH H.

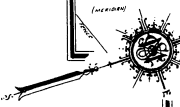
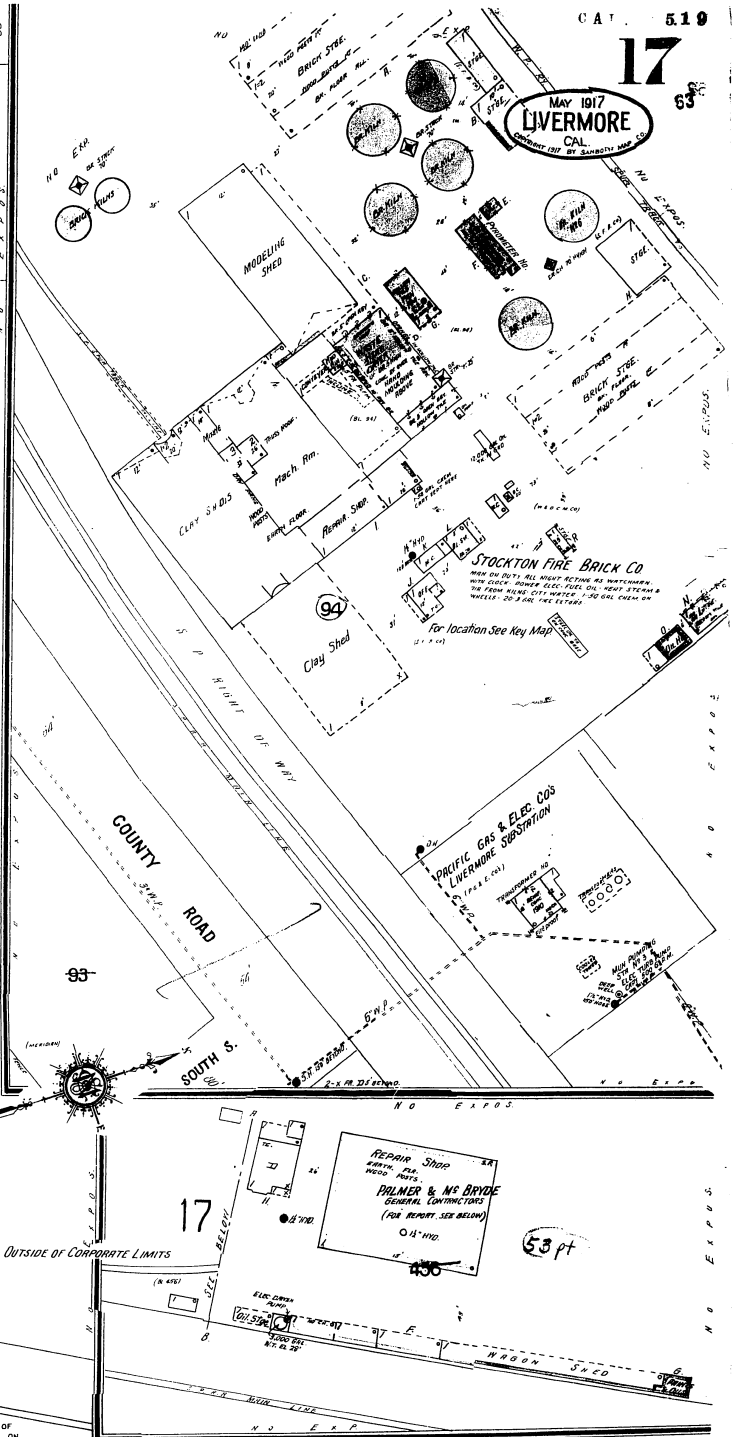
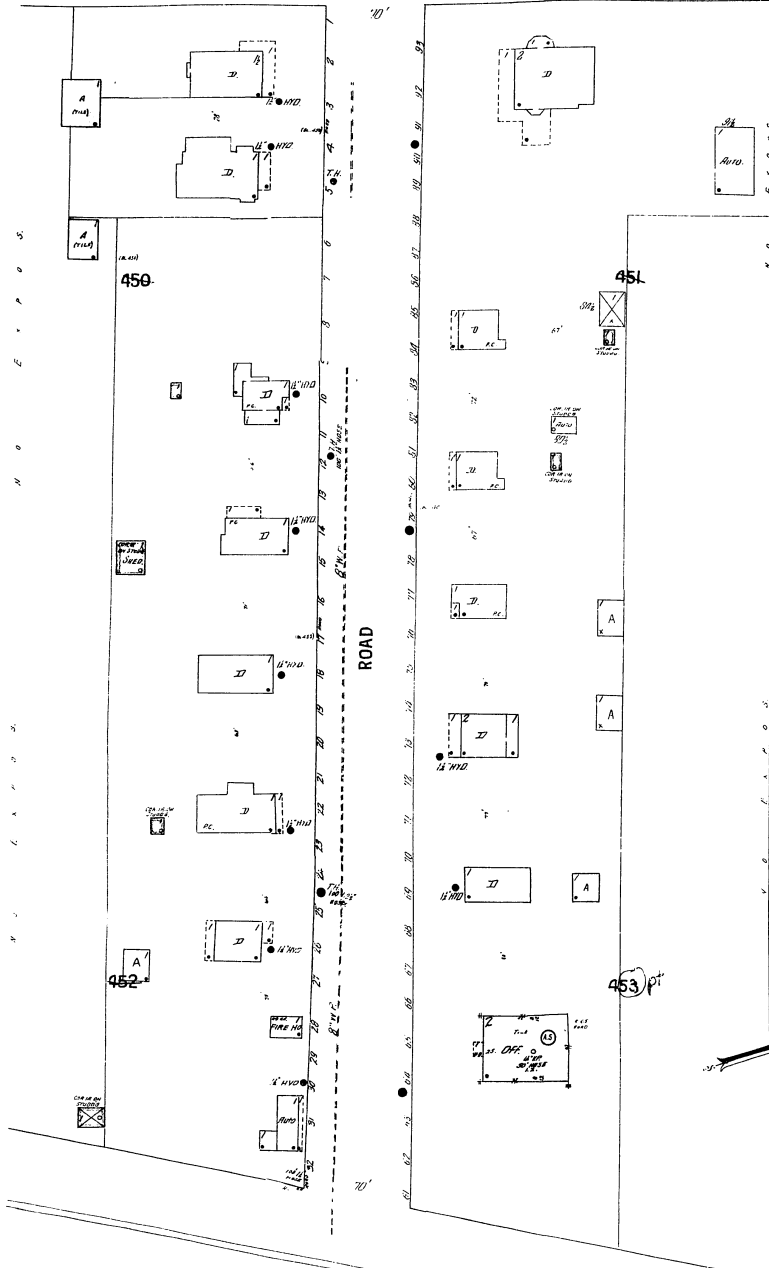
14

SOUTH G.



CAT. 5.19
17
MAY 1917
LIVERMORE
CAL.
63

STATE HIGHWAY ROAD

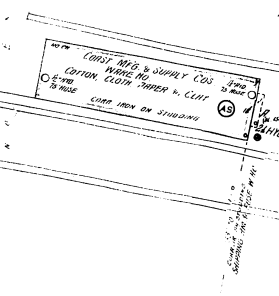


COAST MANUFACTURING & SUPPLY CO'S.
W. H. OFFICE & WAREHOUSE

PORTION OF THIS SHEET EAST OF
W.P. & R. MAIN LINE NOW SHOWN ON
SHEET 21.

21

LOCATED 1/2 MILE EAST OF LIVERMORE

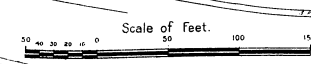


454



PALMER & ME BRIDE
GENERAL CONTRACTORS
EQUIPMENT WAREHOUSE

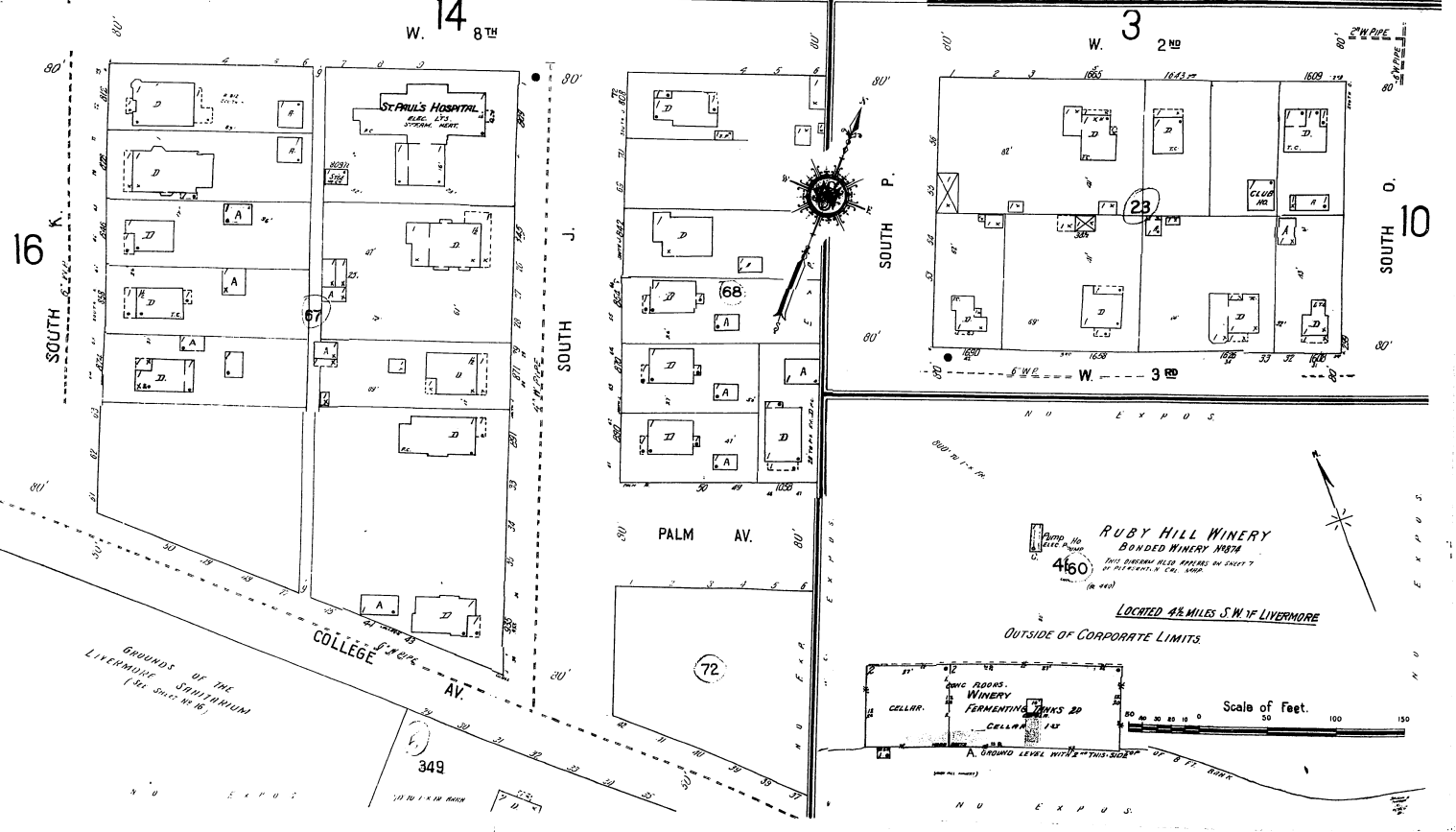
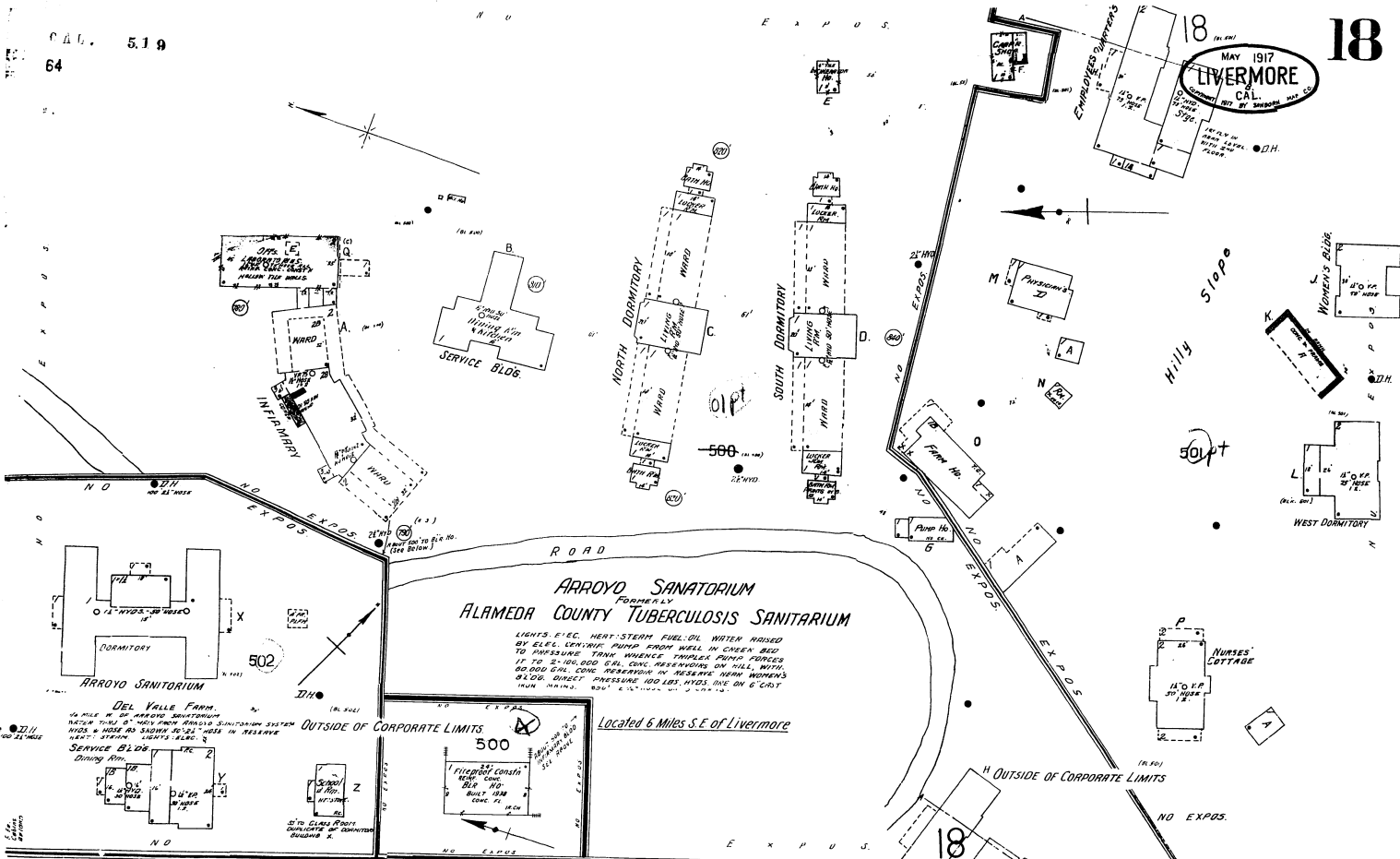
455



NO WORKMEN, FIREMEN LINES ON PREMISES.
PUMP & LAMP, ETC. IN FRONT IMPROVEMENT.
2000 GAL. IRON FILLED PUMP WELL BY SHARPE
ELEC. COUNTRY PHOTO MOUNT & FRAME IN SHED
27' x 33' GAL. WAGON, ETC. TOWNSHIP SOUTH
1/2 SEC. 10 TO CAL. COND. COAST.

COAST MANUFACTURING & SUPPLY CO'S
FIRE WAGON DEPOT

MAY 1917
LIVERMORE
CAL.

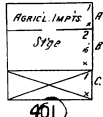


VINEYARD (CONTINUATION OF LIZZIE ST.) AV.

400

WENTE BROS.
BONDED WINERY No 433
PROPRIETOR LIVES ON PREMISES
POWER ELEC. REPT. ELEC. IN OFF. WATER FROM
WELL AT ELEC. TURBINE PUMP. EXTORS

FORMERLY
LOMITES VINEYARD
JOHN GENONI - OWNER



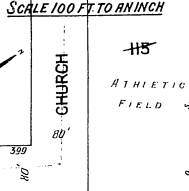
401

OUTSIDE OF CORPORATE LIMITS

LOCATED 1/2 MILES S. OF TOWN

LOCATED 2 1/2 MILES S.E. OF TOWN

SCALE 100 FT. TO AN INCH



E. 5TH

LIVERMORE UNION HIGH SCHOOL

125

125

125

125

125

125

125

125

125

125

125

125

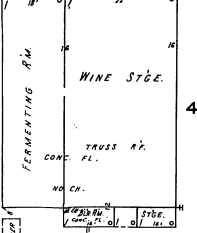
125

125

COUNTY RD
EXTN. OF S. LIVERMORE AV.

R. C. WILLIAMS
CALIFORNIA WINERIES INC.
BONDED WINERY No 423

PROPRIETOR LIVES ON PREMISES
POWER ELEC. REPT. ELEC. IN OFF. WATER FROM
WELL AT ELEC. TURBINE PUMP. EXTORS



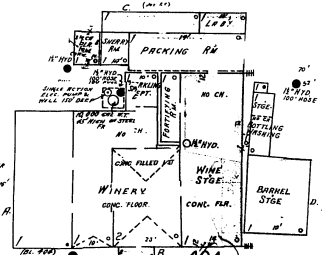
403

LOCATED 1 MILE S.E. OF P.O.
OUTSIDE OF CORPORATE LIMITS

Scale of Feet.



OUTSIDE OF CORPORATE LIMITS



404

JOSEPH S. CONCANNON
OPERATING UNDER STYLE OF
CONCANNON VINEYARD

BONDED WINERY No 65
PROPRIETOR LIVES ON PREMISES
POWER ELEC. REPT. ELEC. IN OFF. WATER FROM
WELL AT ELEC. TURBINE PUMP. EXTORS

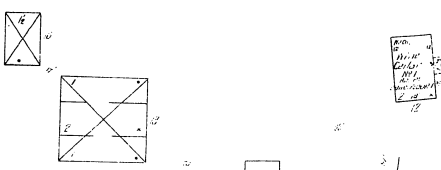
LOCATED 2 MILES S.E. OF TOWN

MAY 1917
LIVERMORE
CAL.

TERRITORY SHOWN ON THIS SHEET
OUTSIDE OF CORPORATE LIMITS

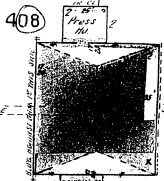
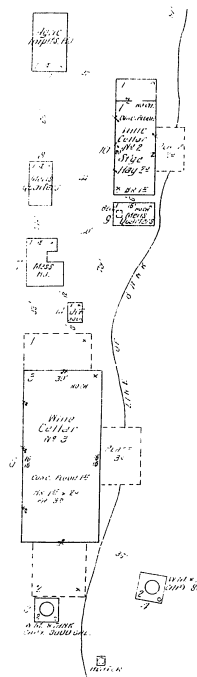
CAT 519

66



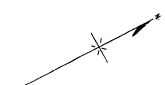
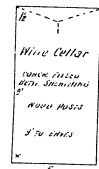
DUVALL'S WINERY
VACANT
(NOT IN OPERATION MAY 1926)
MAN LIVES ON PREMISES

LOCATED 3 1/2 MILES S.W. OF TOWN

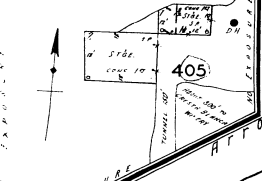


FORMERLY:
OLIVINA WINERY
SET IN OPERATION & COMPLETELY
DISMANTLED

LOCATED 3 1/2 MILES S. OF TOWN



U. S. VETERAN'S HOSPITAL GROUNDS

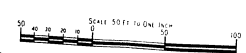
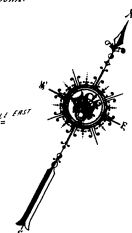
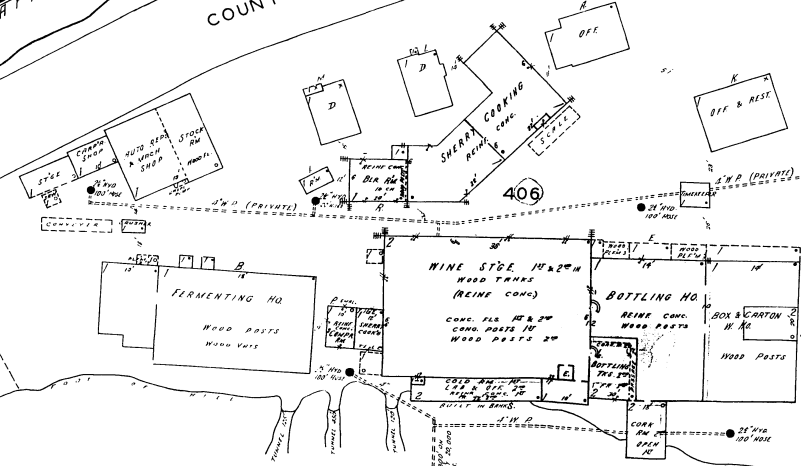


del Valle
COUNTY RD.

Located 4 1/4 Miles S. of Town

CRESTA BLANCA WINE CO. INC
BONDED WINERY NO. 404
(OWNED BY SCHENLEY DISTILLERS CORP.)

DAY & NIGHT WATCHMAN, APPROVED CLOCK: HERE STRAW
TUBES - PUMPER ELEC. WORKS: FROM WHEEL BY ELEC. PUMP
LOCATED 1/4 MILE EAST OF WINERY HYD. HOSE AS SHOWN.



MAY 1917
LIVERMORE
CAL.

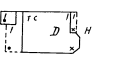
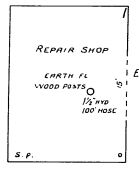
NEW SHEET
APR. 1940

TERRITORY SHOWN ON THIS SHEET
OUTSIDE OF CORPORATE LIMITS

TRAVARNO
Located 1/2 miles E of Livermore

COAST MFG & SUPPLY CO'S
FUSE PLANT
NOT CORRECTED SINCE APR 1940

REMARKS: THIS PLANT WAS BUILT BY THE TRAVARNO CO. IN 1917. THE BUILDING WAS DESTROYED BY FIRE IN 1938. THE PLANT WAS REBUILT BY THE TRAVARNO CO. IN 1939. THE PLANT IS NOW OWNED BY THE TRAVARNO CO. THE PLANT IS NOW USED AS A FUSE PLANT. THE PLANT IS NOW USED AS A FUSE PLANT. THE PLANT IS NOW USED AS A FUSE PLANT.



S H PALMER CO, LTD
GENERAL CONTRACTORS

NO SWITCHMAN FOREMAN WIVES
IN REAR END WATER FROM A WELL
ON THE ELEC. MAIN TO R. 3000. 10\"/>

S H PALMER'S BLDGS
FORMERLY SHOWN ON
SHEET 17

