

1952

FIRE INSURANCE MAP

—OF—

LIVERMORE, CALIF.

Loaned to and for the Exclusive use of

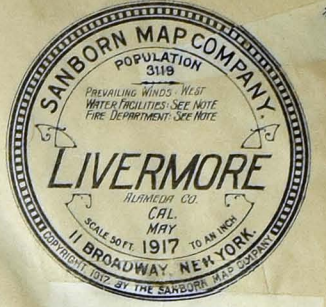
AGENTS IN

Duplicate—PROPERTY OF

Published and Copyright by

SANBORN MAP COMPANY

San Francisco, Cal.



KEY
FIRE WALL IN ANY ROOF
METAL CORNICHE
WOOD CORNICHE
FIRE WALL WITH ANY ROOF
FRAME PARTITION
"STANDARD"
OPENING WITH IRON DOOR
IRON DOOR
WINDOWS & IRON SHUTTERS
WINDOW 1ST STORY
WINDOWS 2ND & 3RD STORIES
2ND & 3RD
STABLE (C) CONCRETE BLOCK
BUILDINGS COLORED YELLOW ARE FRAME
BRICK
BLUE
IRON
BROWN FIRE PROOF
INDICATE
RELATIVE HEIGHTS
AUTOMATIC
FIRE STATION, AS SHOWN ON KEY MAP
ALTERNATE STREET NUMBERS ARE ACTUAL
CONSECUTIVE STREET NOS ARE ARBITRARY



GRATE CARE HAS BEEN EXERCISED IN THE
PRODUCTION OF THIS PUBLICATION AND
OUR SERVICE, BUT ABSOLUTE ACCURACY
IS NOT GUARANTEED.

CORRECTION RECORD

REVN NO.	DATE OF CORRECTION	ATTACHED BY
4	1/2/22	J.P.

WATER WORKS: - CALIF. WATER SERVICE CO. (A PRIVATE CORPORATION)
OWNER: SANBORN & COMPANY. SYSTEM: WATER FROM A 250,000 GAL.
CONCRETE RESERVOIR, LOCATED 1 1/2 MILES NORTH OF LIVERMORE, CALIF.
TOWN, CONVEYED TO LIVERMORE, CALIF. BY 12" STEEL PIPE
RESERVOIR IS FILLED FROM 40 WELLS, LOCATED 3/4 MILES NORTH OF
RESERVOIR, BY 1" CENTRIF. ELEC. DRIVEN PUMPS (CAPY 31,300 GALLS. PER
HOUR) & BY 2" ELEC. DRIVEN PUMPS (CAPY 21,000 & 21,000 G.P.
HOUR EACH). PIPE PRESSURE FROM RESERVOIR 50 LBS. PER SQ. INCH. IMPACT
PRESSURE FROM PUMPS UP TO 100 LBS. PER SQ. INCH IS OBTAINED BY ISSING
BY-PASS AROUND RESERVOIR - 6" - 5" - 4" - 3" & 2" DISTRIBUTING MAINS
1" DOUBLE & 1/2" SINGLE 2 1/2" IPS.
ADDITIONAL SUPPLY FROM DEEP WELL AT SUB-STA. (SHEET 17)
BY AUTOMATIC ELEC. TURBINE PUMP, CAPY. 300 G.P.M. THRU
6" & 8" CONNECTING MAINS.

FIRE DEPT.: - VOLUNTEER: CHIEF, 2 ASSTS & 20 MEN. DEPART-
MENT IS PAID \$ 000 PER YEAR. - APPARATUS: - 1 STEAM
AUTO COMB. PUMPER CAPY. 750 G.P.M., CARRYING 1500 "E" & 300"
1 1/2" HOSE. - 1 FORD AUTO DRIVEN PUMP, 1500 GAL. TANK. 1 1/2" HOSE
1" HAND HOSE CAPY. 600" - 2 1/2" HOSE - 1 HALL THROU (TRUCK)
16 3/4 GAL. CHEM. EXTINGUISHERS DISTRIBUTED IN BUSINESS DISTRICT.
FIRE ALARM - BELL & SHOWN ON TOWN HALL (BLOCK 103 SHEET 145)
OPERATED BY 3 SWITCH BLANKS LOCATED ON W. 131ST ST. RINGS
12 TIMES PER MIN. UNTIL SWIT. OFF, ALSO BY HORN ON TELE-
PHONE C.R.L. FIRE LIMITS INDICATED BY RED LINE ON KEY
STREETS: ASPHALT & MACADAM.
GRADES: LEVEL, LIGHTS: ELEC.

INDEX

REVISED DEC., 1929

STREETS	Sheet	STREETS	Sheet	STREETS	Sheet	STREETS	Sheet				
Chestnut	1000-1247 5	I, North	100-300 *6	M, North	240-399 4	Railroad Ave.	940-999 6	Arendt, H. & Co., Lbr. Y'd & Planing Mill	6	Livermore Winery, Wagoner, H. B.	9
Church	1500-1615 3	" South	101-399 *5	" South	400-891 2	" "	1000-1246 *8	Arroyo Sanatorium	18	Lomitas Vineyard	19
College Ave.	1052-1199 18	" "	201-489 *11	" "	30-169 7	" "	1001-1299 *5	Buckley's, Chris., Winery	19	Mally's Hotel	8
County R'd	1217-1602 16	" "	260-498 *12	" "	200-499 10	" "	1260-1498 *4	Calif. Water Service Co.'s Sta. No. 4	2	Masonic Hall	8
East Ave.	100-159 12	" "	500-815 14	" "	500-799 13	" "	1301-1591 *7	City Hall	9	Mont-Rouge Vineyard	19
Eighth, E.	100-209 15	" "	100-299 9	" "	800-899 16	" "	1500-1590 *3	Coast M'fg & Supply Co.	17	Olivia Winery	20
" W.	700-899 15	J, South	100-199 8	Maple	100-299 9	S, South	100-399 17	Concannon's, James, Winery (Frm'ly)	19	Pac. Gas & Elec. Co., Livermore Sub-Sta.	17
" "	900-1051 14	" "	200-499 11	" "	300-459 12	Second, E.	100-399 9	Cresta Blanca Wineries Nos. 1 & 2	20	" Elec. Supplies, Off. & Stge	8
" "	1052-1198 *14	" "	500-799 14	" "	461-541 *12	" W.	1000-1298 *8	Dania Hall	10	" Tell & Teleg. Co.'s Repeater Sta.	9
Elm	1053-1199 *18	Junction	200-291 6	" "	581-589 *15	" "	1301-1598 *7	Dickie, W. S., Clay M'fg Co.	17	Palace Hotel	17
Fifth, E.	100-146 *12	" "	610-929 2	N, North	100-398 *4	" "	1301-1598 *10	Duvall's Winery	20	Palmer & McBryde, Gen'l Contractors	18
" "	101-145 *15	" "	610-929 2	" "	101-399 *3	" "	1600-1792 *3	Emergency Hospital	11	Post Office	11
" W.	147-298 12	K, North	100-399 5	" "	400-891 2	" "	1601-1699 *18	Fire Dept.	9	Poultry Producers of Central Cal.	9
" "	2-22 15	" South	100-399 2	" South	30-169 7	" "	100-275 15	First Presby'n Church	11	" Grain W. Ho.	8
" "	900-998 *12	" "	400-859 2	" "	200-499 10	" "	748-899 15	Grace Church (Episc'l)	11	Raboli Bros. Winery	8
" "	901-1191 *14	" "	100-199 8	" "	500-522 *13	" "	900-1199 14	Hetch Hetchy Water Supply Co.'s Coast Range Div.	7	Ravens Wood, Buckley, Chris., Winery	18
" "	1000-1298 *11	" "	200-499 11	" "	501-521 *10	" "	1200-1299 13	Hydrophatic Institute of the Livermore Sanitarium	16	St. Michael's Church (R. C.)	12
" "	1201-1499 *13	" "	500-798 *14	" "	523-738 13	" "	100-299 15	I. D. E. S. Hall	2	School	12
" "	1300-1450 *10	" "	501-781 *13	" "	800-899 16	" "	800-899 15	I. O. O. F. Lodge Hall	12	Shoemaker Cash Lumber Co.	4
" "	1500-1621 10	" "	800-880 *18	O, North	300-399 3	" "	900-1199 14	Independent Lumber Co.'s Lumber Y'd.	8	S. P. Co.'s Bunk Ho's & W. Tk.	7
First, E.	100-321 9	" "	801-871 *16	" South	400-891 2	" "	1200-1519 13	W. Ho. Co.'s Grain W. Ho's Nos. 1 & 2	7	" " Passenger & Freight Depot	8
" W.	350-541 6	Linden	100-399 4	" "	30-169 7	" "	321-499 *9	" " Hay W. Ho's Nos. 3 & 4	7	Traveler's Hotel	8
" "	1050-1299 8	Livermore Ave., N.	100-399 5	" "	200-499 10	" "	350-518 *6	" " "	7	Union Ice Co.'s Ice Ho.	8
" "	1050-1599 7	" "	100-399 4	" "	201-299 *18	" "	1601-1921 *3	Jail	9	Valley Hotel	7
" "	1600-1921 3	" S.	100-399 4	" "	200-298 *10	" "	1601-1921 *3	Livermore Commercial Co.	8	Wagoner, H. B., Livermore Winery	9
" "	100-399 12	" "	400-929 2	" "	1-169 *7	" "	2 & 17	" Free Library	11	Wente's, C. H., Grape Juice Plant	19
" "	100-399 12	" "	100-199 8	" "	200-298 *10	" "	100-398 *9	" Grammar School	14	W. P. R'y Depot	5
" "	900-999 12	" "	200-499 11	" "	201-299 *11	" "	101-399 *12	" Sanitarium	15	" Freight Shed	4
" "	1000-1289 11	" "	200-488 *10	" "	1000-1247 5	" "	900-931 12	" Union High School No. 1	15	Winegars, H. P., Grain W. Ho.	3
" "	1300-1611 10	" "	500-781 *14	" "	1248-1499 4	" "	1000-1299 11	" " 2	8		
G, South	15 15	" "	500-883 15	Oak	1248-1499 4	" "	1300-1599 10				
H, South	421-485 *12	" "	799-1138 16	Olivina Ave.	3 3	" "	1600-1690 *18				
" "	500-814 *15	Livermore Ave., N.	100-399 5	P, North	400-890 *2	" "	1601-1625 *10				
" "	501-813 *14	" "	100-399 5	" South	30-199 3	" "	1601-1625 *10				
		" "	100-399 4	" "	200-298 *18	" "	1601-1625 *10				
		" "	400-941 2	Palm Ave.	18 18	" "	1601-1625 *10				
		" "	400-941 2	" "	31-189 *8	" "	1601-1625 *10				
		" "	100-399 5	" "	31-189 *8	" "	1601-1625 *10				
		" "	100-399 4	" "	261-299 *12	" "	1601-1625 *10				
		" "	100-399 4	" "	300-499 *12	" "	1601-1625 *10				
		" "	100-399 4	" "	500-883 15	" "	1601-1625 *10				
		" "	100-399 4	Locust	2 2	" "	1601-1625 *10				
		" "	100-399 4	McLeod	100-299 9	" "	1601-1625 *10				
		" "	100-399 4	" "	300-541 12	" "	1601-1625 *10				
		" "	100-399 4	" "	561-799 15	" "	1601-1625 *10				

* Indicates only one side of street shown.

254

SCALE: 100 FT. TO 1 INCH.

240

227

226 1/2

2

LIVERMORE AV.

MAY 1917
LIVERMORE
CAL.

I.D.E.S. HALL

DANCE HALL

DANCE HALL

DANCE HALL

DANCE HALL

DANCE HALL

DANCE HALL

DANCE HALL

DANCE HALL

DANCE HALL

DANCE HALL

DANCE HALL

DANCE HALL

DANCE HALL

DANCE HALL

DANCE HALL

DANCE HALL

DANCE HALL

DANCE HALL

DANCE HALL

DANCE HALL

DANCE HALL

DANCE HALL

DANCE HALL

DANCE HALL

DANCE HALL

DANCE HALL

DANCE HALL

DANCE HALL

DANCE HALL

DANCE HALL

DANCE HALL

DANCE HALL

DANCE HALL

DANCE HALL

DANCE HALL

DANCE HALL

DANCE HALL

DANCE HALL

DANCE HALL

DANCE HALL

DANCE HALL

DANCE HALL

DANCE HALL

DANCE HALL

5



NORTH K.

NORTH L.

NORTH M.

NORTH N.

NORTH O.

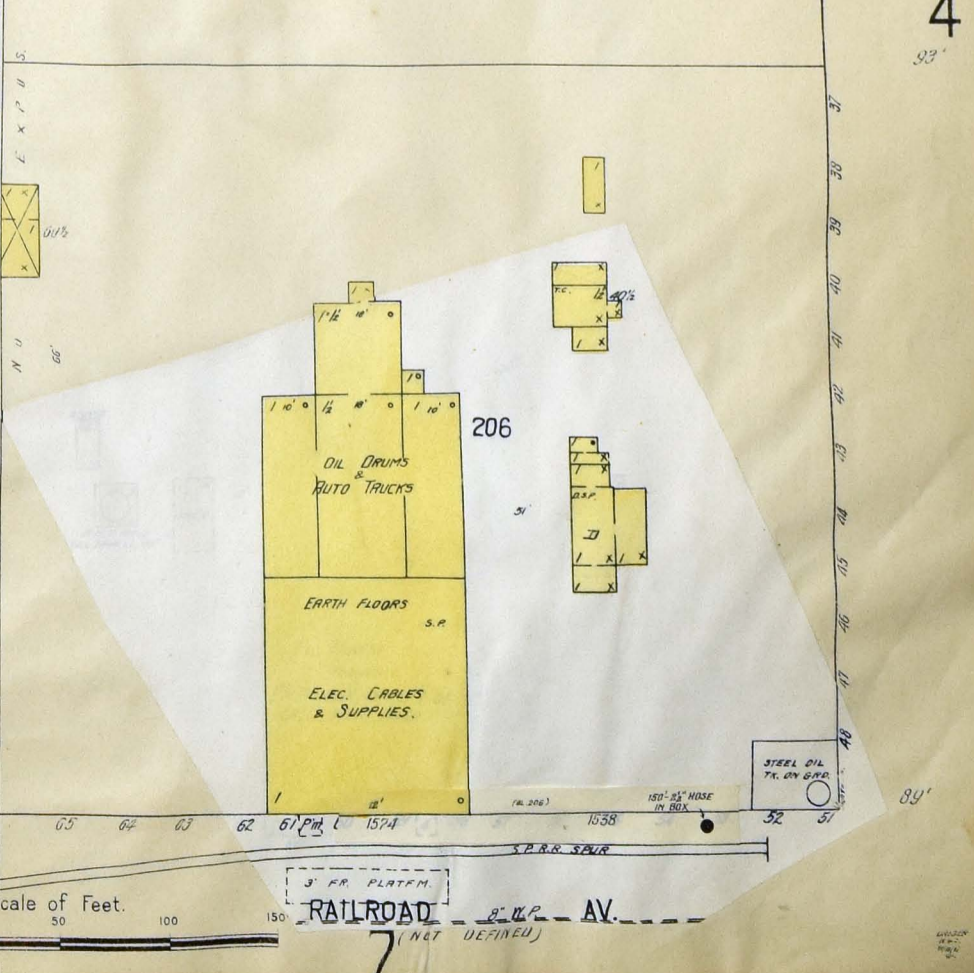
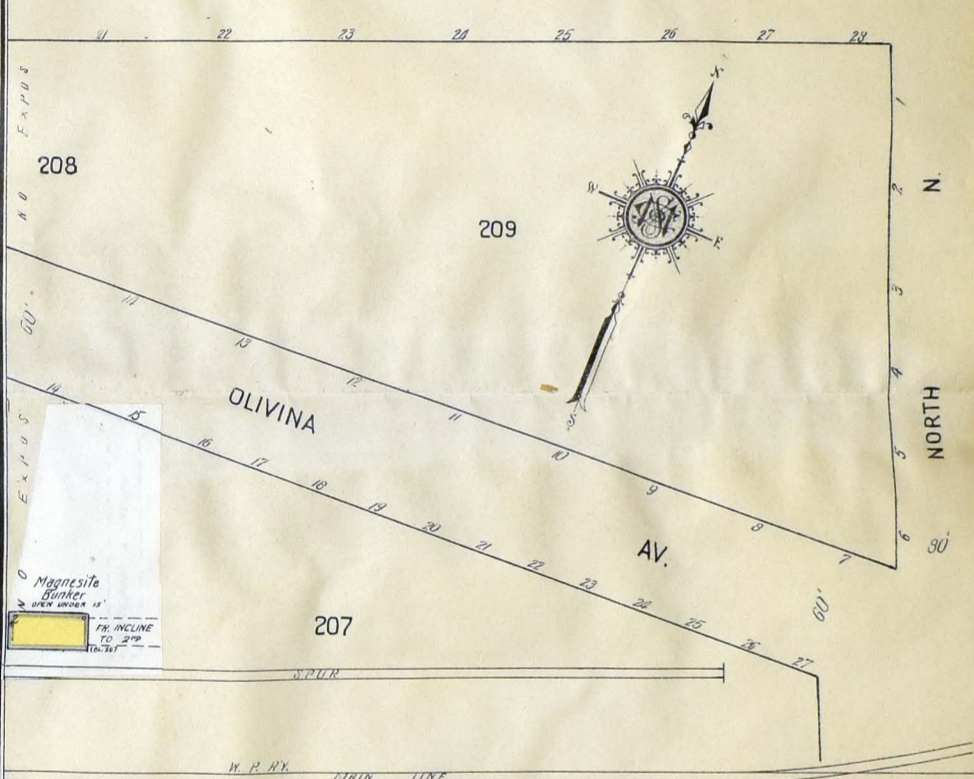
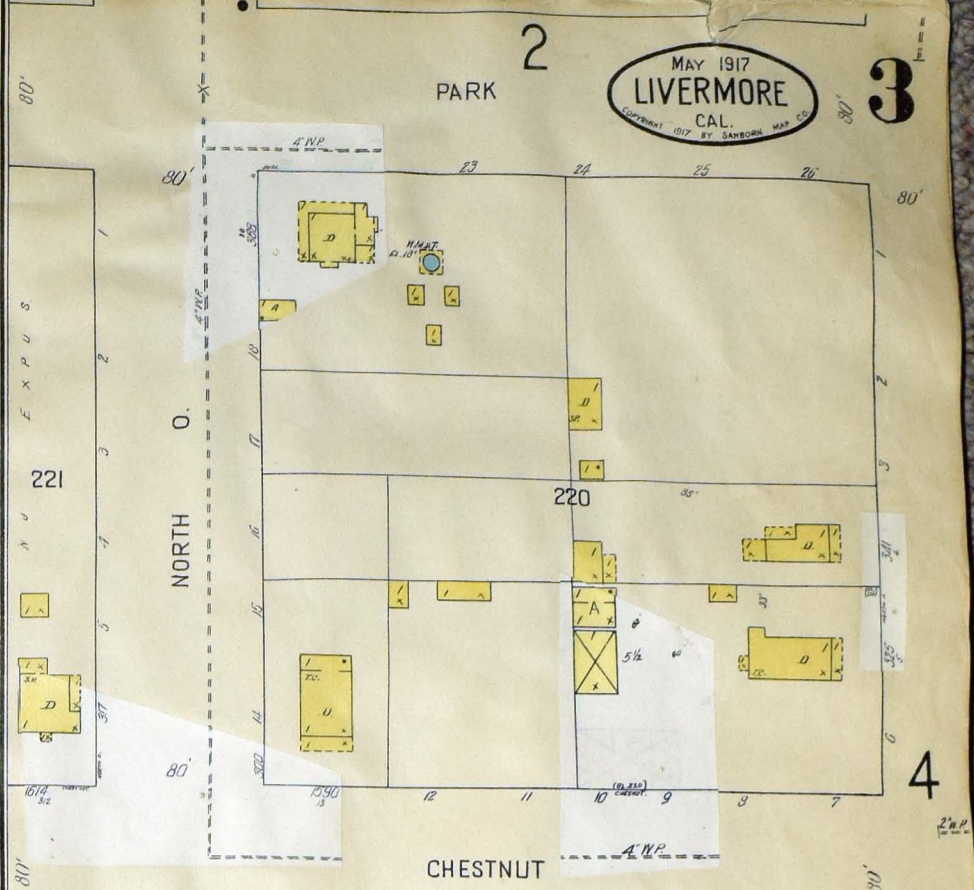
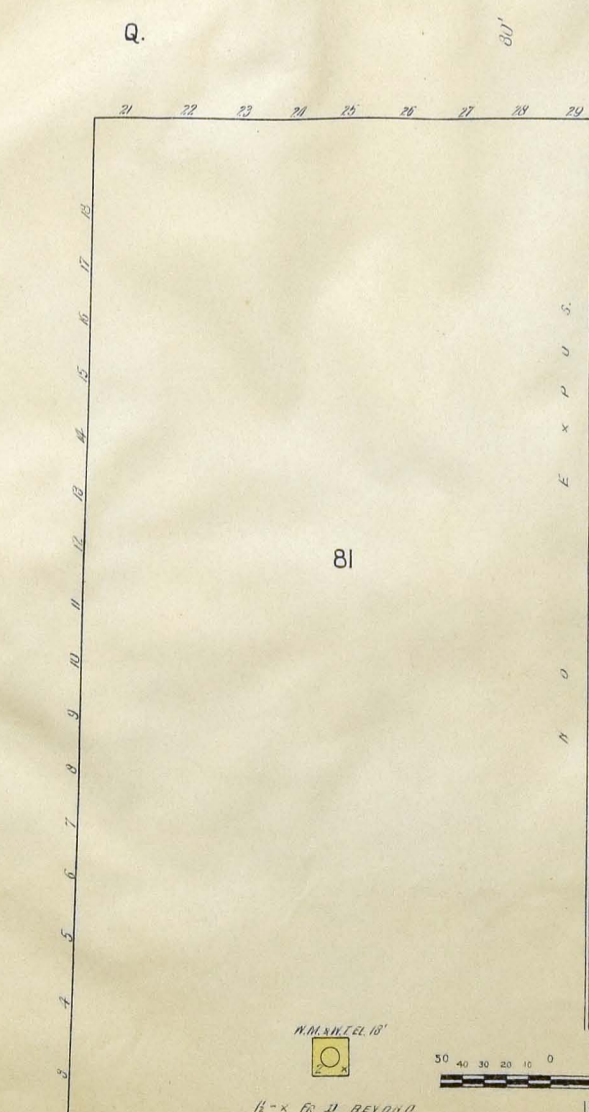
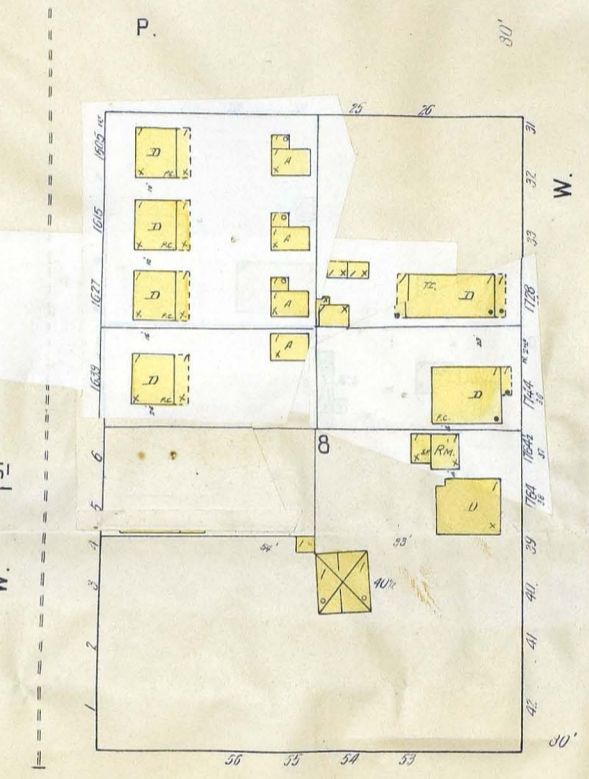
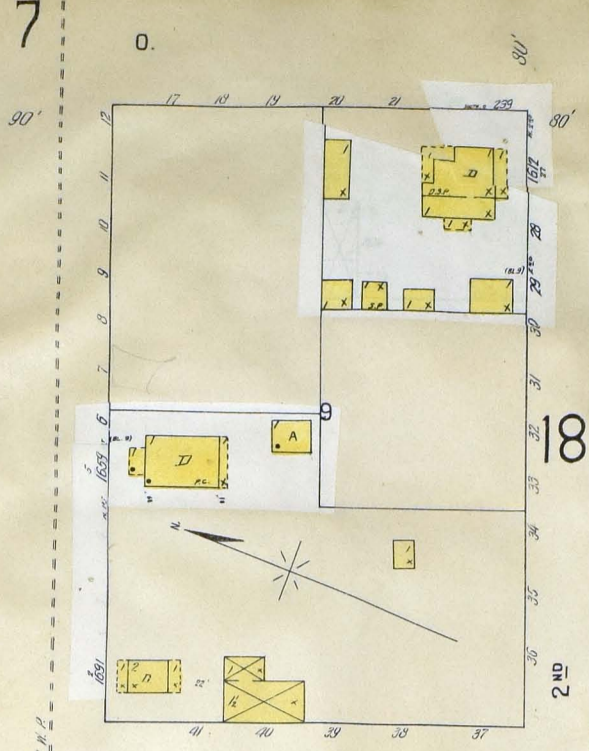
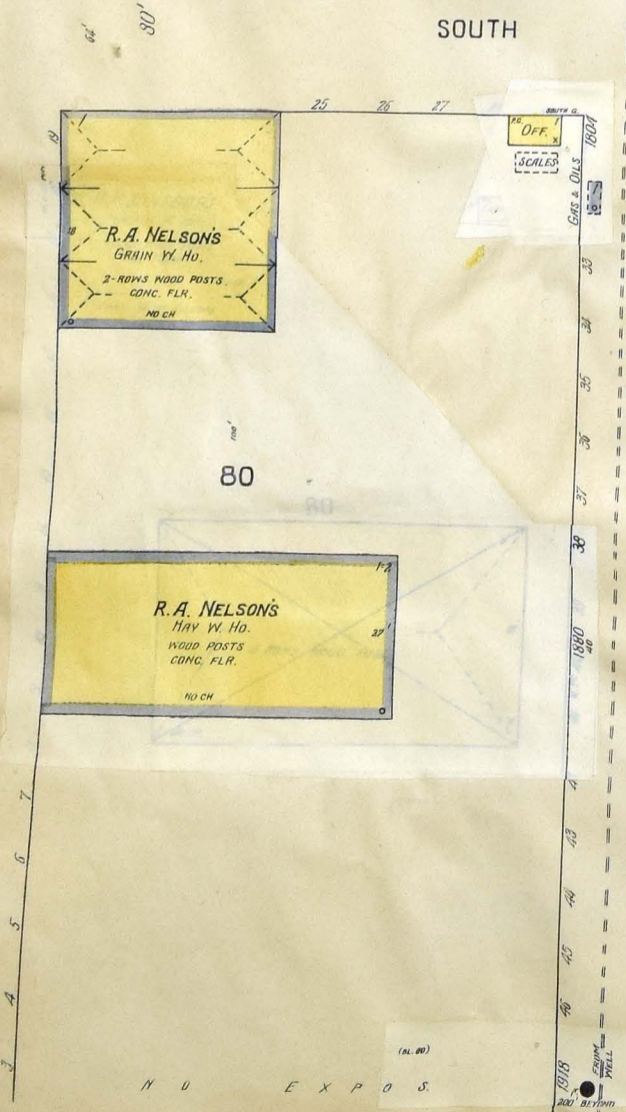
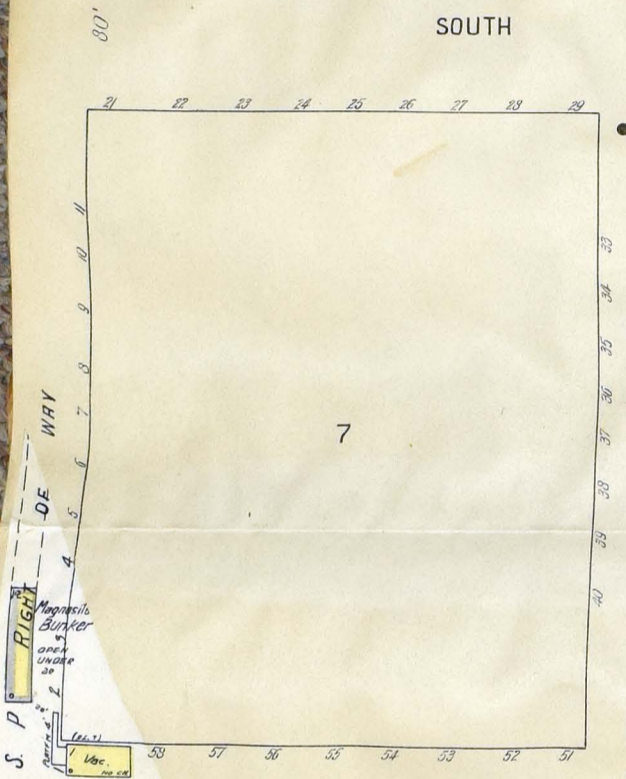
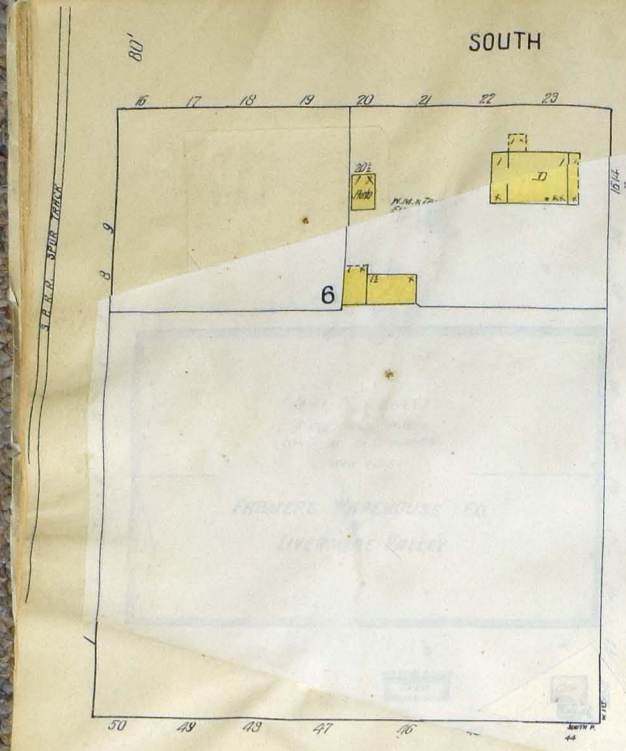
NORTH P.

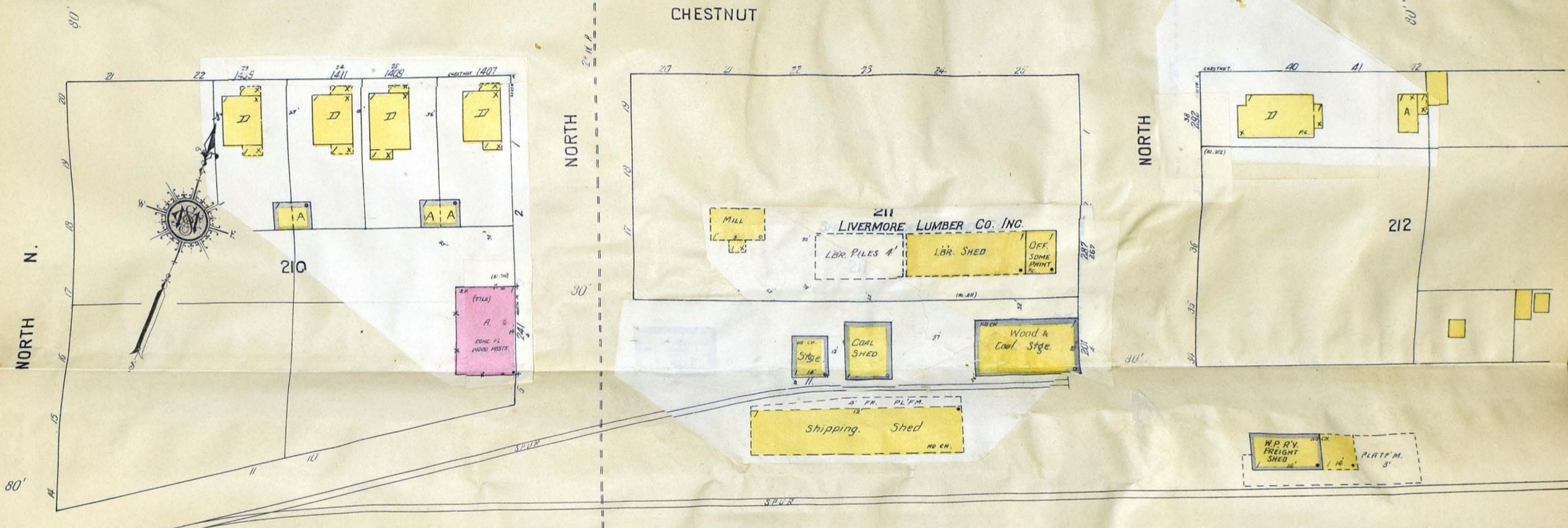
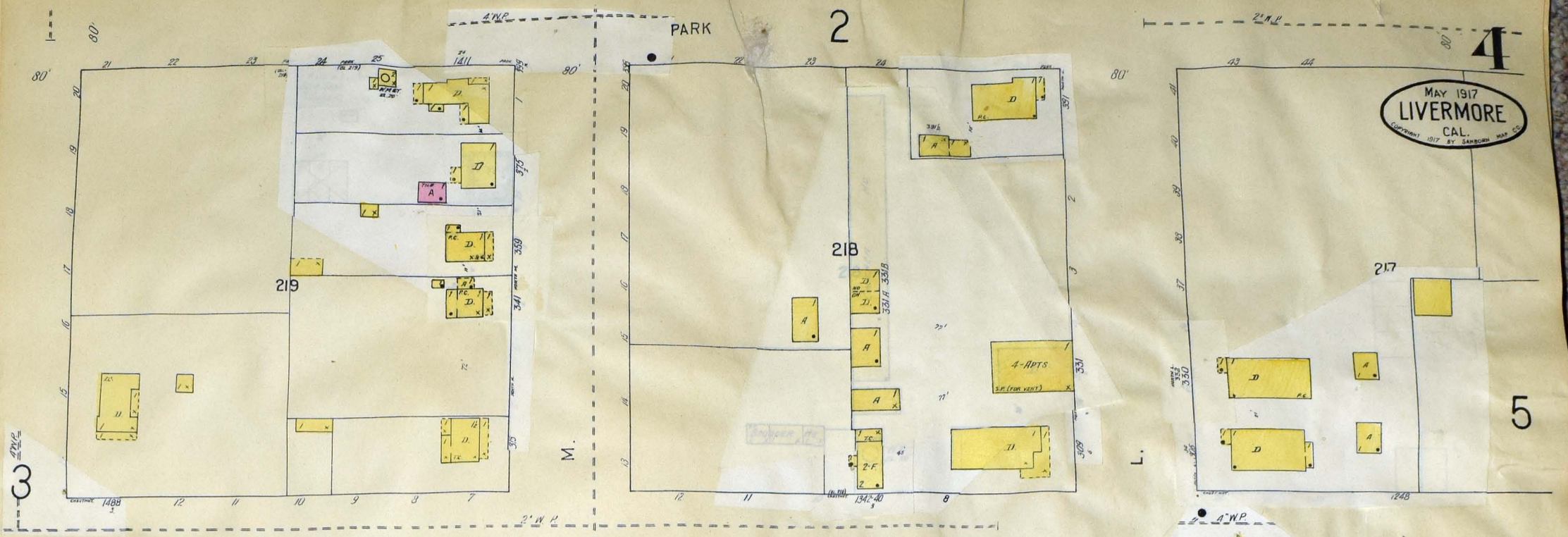
4

3

Scale 100 Ft to One Inch.



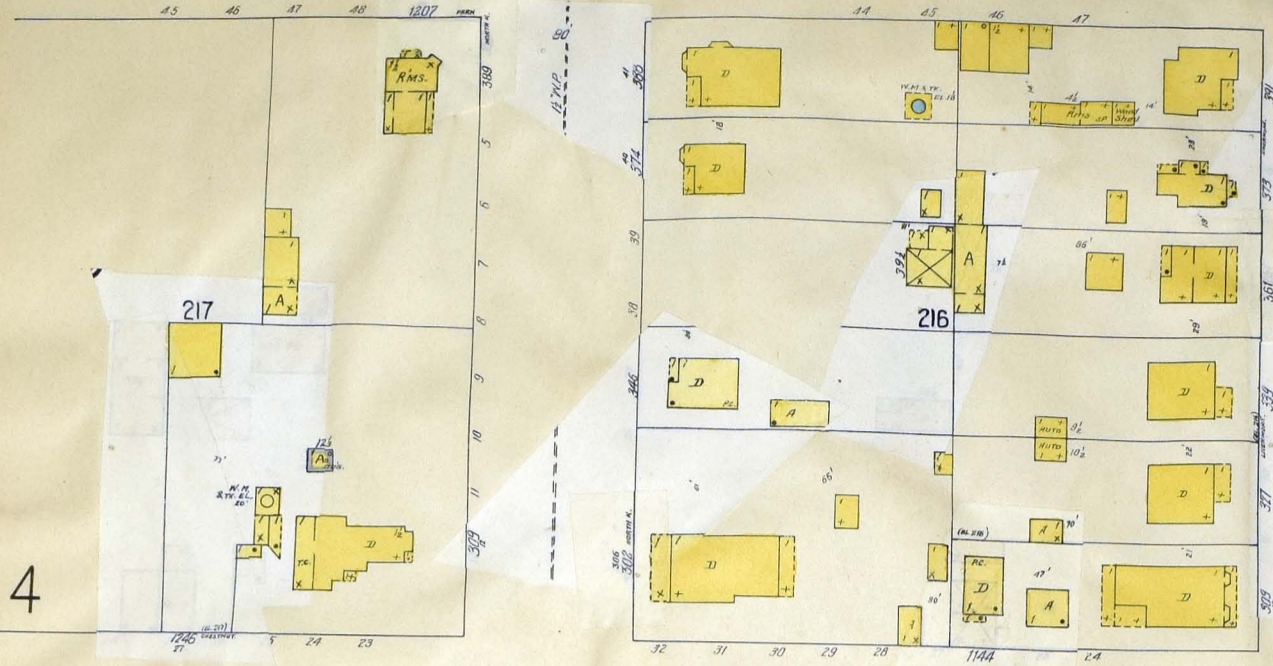




MAY 1917
LIVERMORE
CAL.
Copyright 1917 by SANBORN MAP CO.

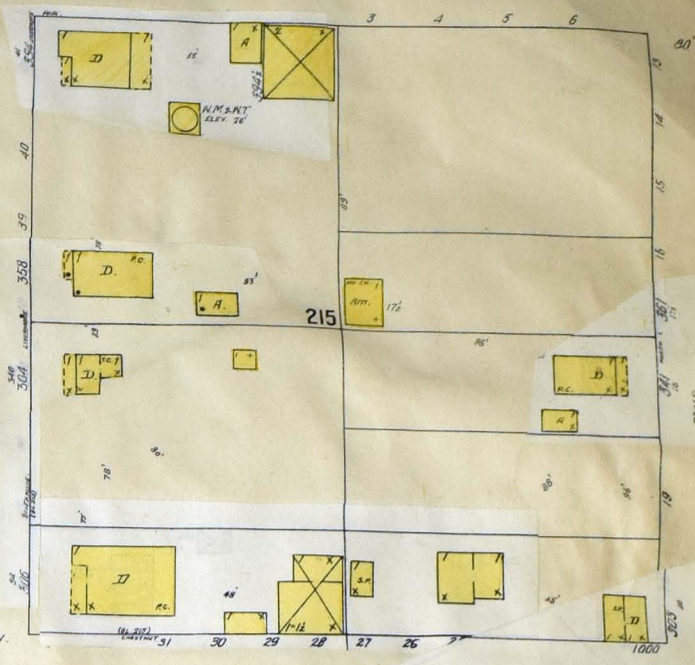
Scale of Feet.
50 40 30 20 10 0 50 100 150

PARK

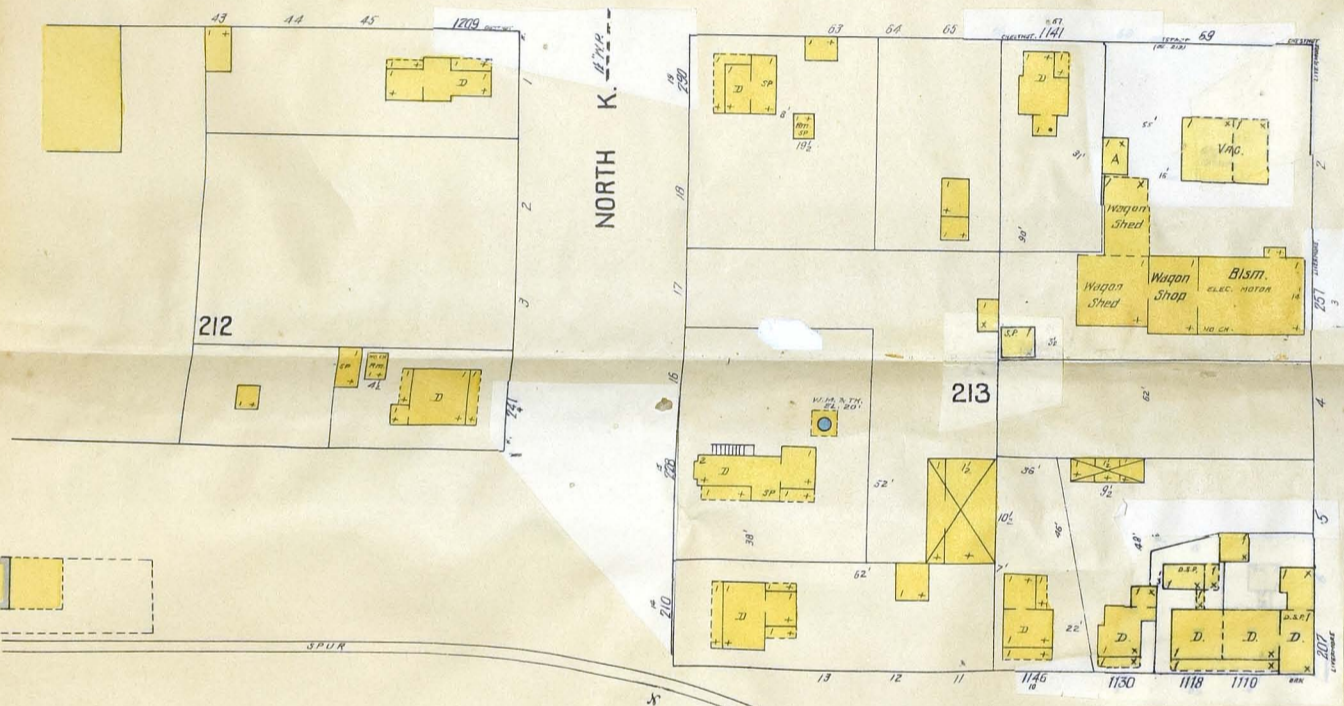


4

AV.



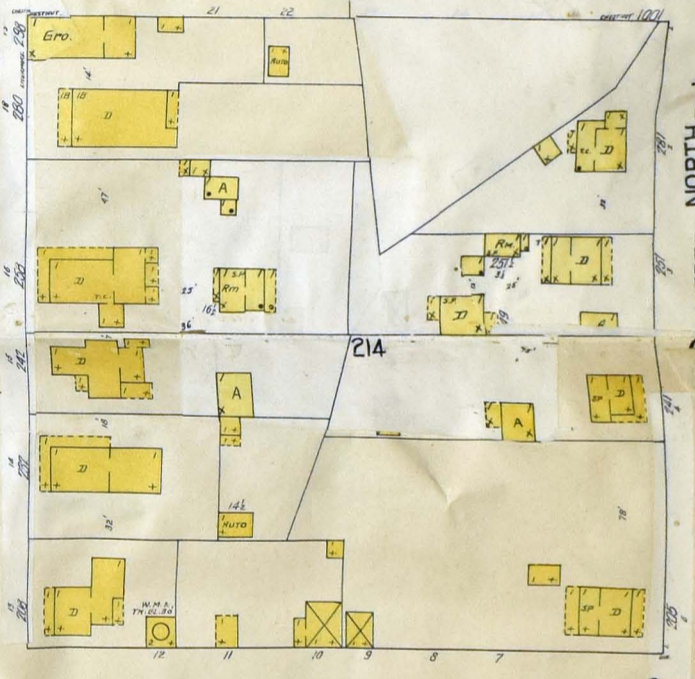
CHESTNUT



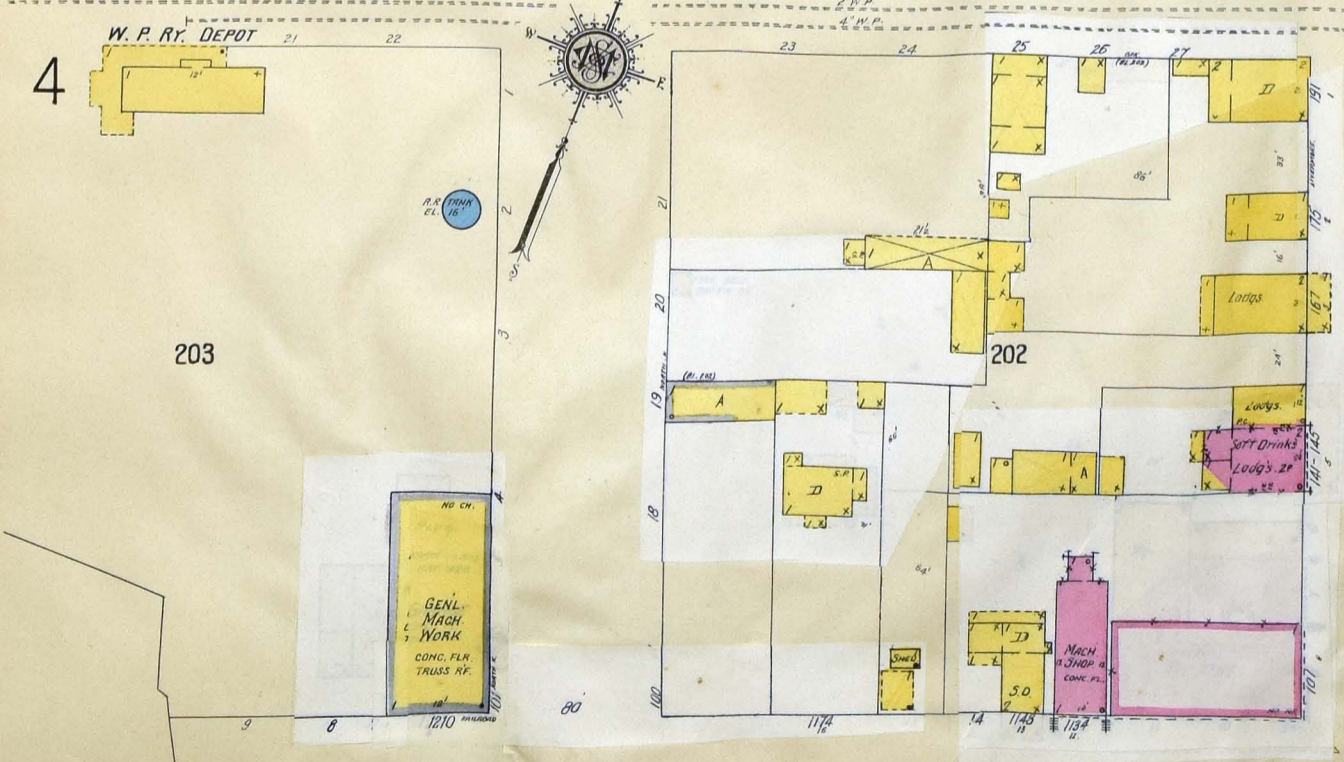
NORTH K.

N. LIVERMORE

NORTH



OAK

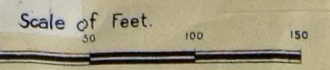


4



RAILROAD
(NOT DEFINED)

AV.



MAY 1917
LIVERMORE
CAL.
COPYRIGHT 1917 BY DANBORN MAY CO.

300

JUNCTION
AV.

AV.

301
(wood)

302

306

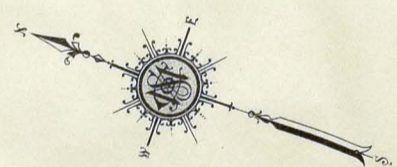
E. 1ST

R. R. RIGHT OF WAY

CO

R. R. RIGHT OF WAY

Equip. STGE.
900
CITY CORPN. YARD.



303

304

AV.
(NOT DEFINED)

PLANING MILL
ELEC. POWER

305
PROGRESSIVE LUMBER CO.
LUMBER YARD & PLANING MILL.
NO NIGHT WATCHMAN.

H. ARENDT & Co.
Hay W. Hd No. 1.
WOOD POSTS

RAILROAD

Lumber Shed
DRIVE

NORTH I.

Scale of Feet.

EXPOS.

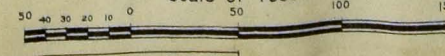
EXPOS.

N O

8 7 6 5 4 3 2 1

80'

OAK



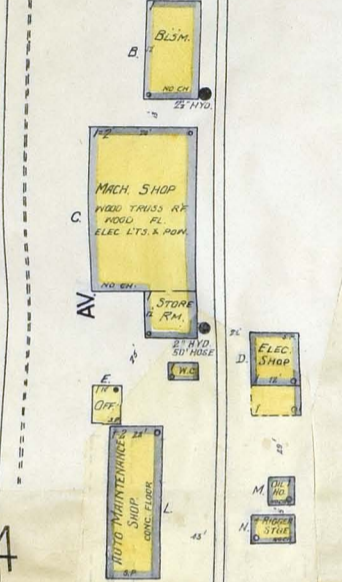
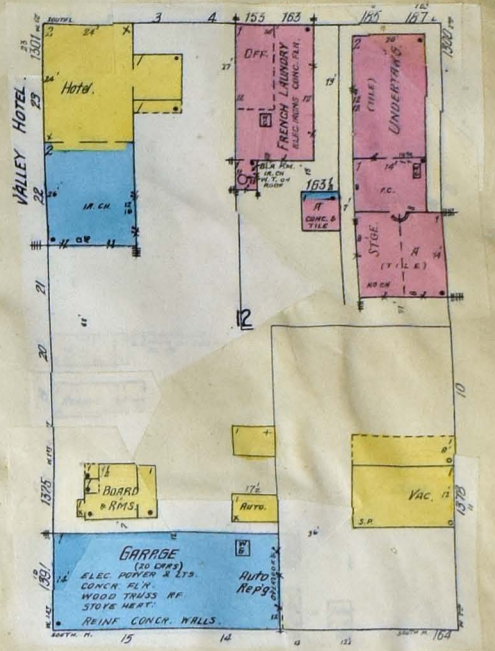
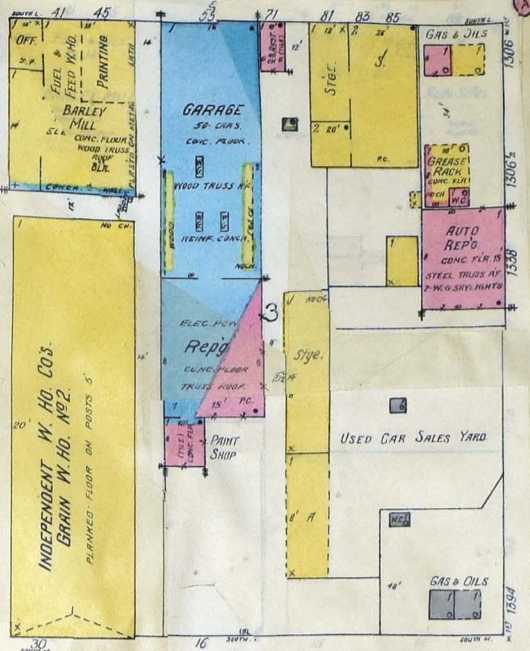
NORTH L.

SOUTH L.

4

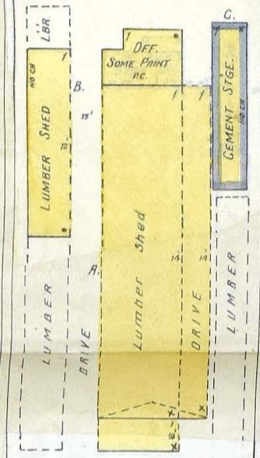
309

HETCH HETCHY WATER SUP. CO'S
COAST RANGE DIVISION
HEADQUARTERS & MATERIAL YARD.

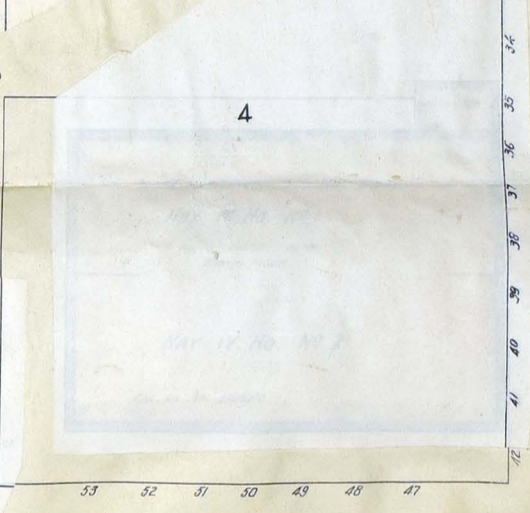
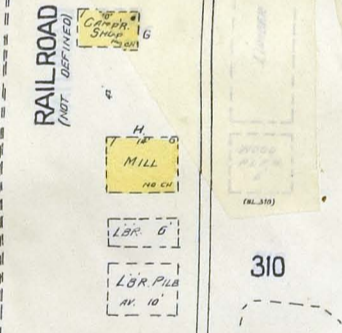
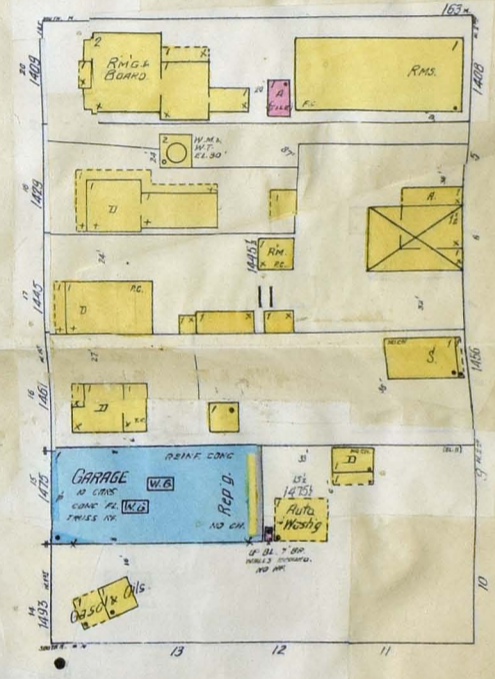
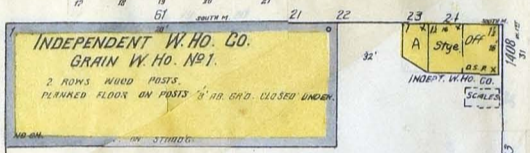


INDEPENDENT LUMBER CO'S
LUMBER YARD

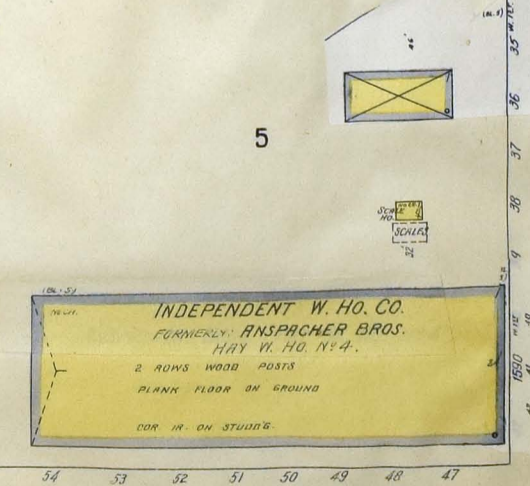
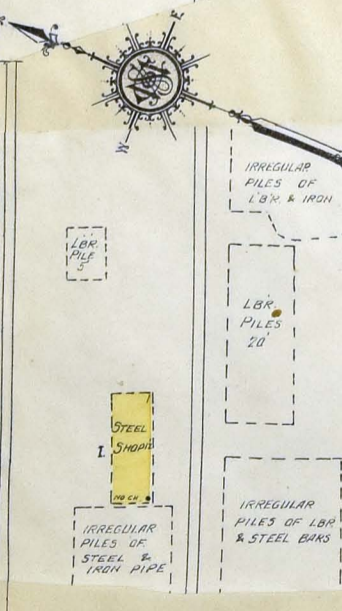
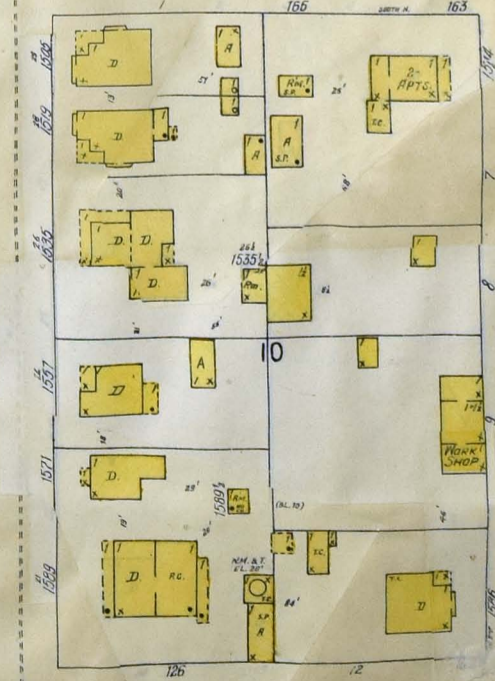
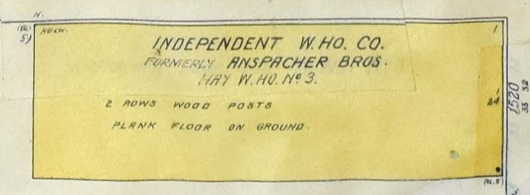
CAP. 250,000 FT.
NO NIGHT WATCHMAN
ON FIVE APPS.



SOUTH M.



SOUTH N.



SOUTH O.



Scale of Feet
0 50 100 150

10

W. 1ST

W. 2^o

10

3

NORTH I.

6

POULTRY PRODUCERS OF CENTRAL CALIF.
GRAIN W. HO.

307
(305)

LIVERMORE
COMMERCIAL CO.
FLOUR, CEMENT
& MOOSE
W. HO.

LIVERMORE AV.

9

MORNING HALL
BANK
Banquet Rm. 300
Lodge Rms. 24
ELEC. PRINTS
S. Variety
ELEC. PRINTS
S. Variety

SOUTH J.

MALBY'S HOTEL
REST.
KITCH.
Auto Wash
REST.
D.G.
D.G.
D.RUGS

SOUTH K.

PALACE HOTEL
NEWS & EXPRESS OFF.
3-HG. SKYLIGHTS
3-HG. SKYLIGHTS
Beauty Shop
Rest.
Ball Rm.
Lobby
Rooms

SOUTH L.

Scale of Feet
50 40 30 20 0 50 100 150

LIVERMORE AV.

RAILROAD

AV.

H. ARENDT & CO.
HAY W. HO. No. 2
WOOD POSTS
SOUTH FLOOR

308

CORRAL
STOCK

S.P.R.R. PASSENGER & FREIGHT DEPOT.

UNION ICE CO'S.
Ice Ho.

TRAVELERS' HOTEL
STAGE OFF. & S.
ROOMS

PACIFIC GAS & ELEC. CO.

GENL. STGE. (PILE)
BLDG. MATLS.
PRESSING

COAL & WOOD SHED
W. HO.

Garage
12 CARS
STEEL TRUSS
CONC. FL.
ELEC. LTS.
(TILE)
REPS.



5

5

4

NORTH K.

NORTH L.

11

11

7



LIVERMORE WINERY
H. B. WAGONER
MAN LIVES ON PREMIS. POWER: STM. & ELEC.
P.W. TRANSMITTED TO WINERY BY CABLE
LIGHTS: ELEC. & CANDLES.
WELL WATER - NO FIRE APP EXCEPT ABOUT
500'-1 1/2" WINE HOSE.

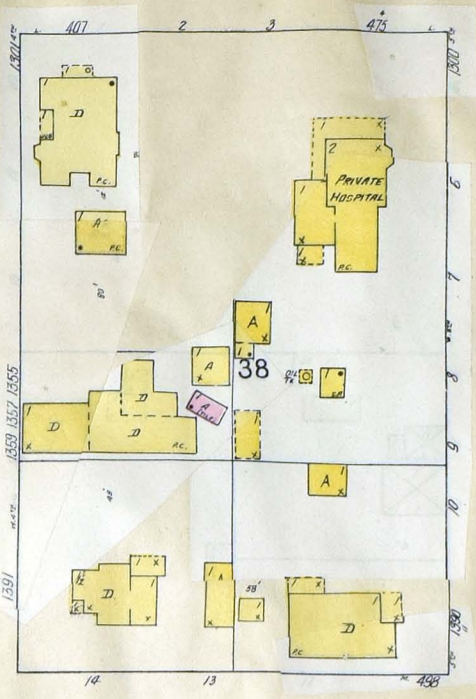
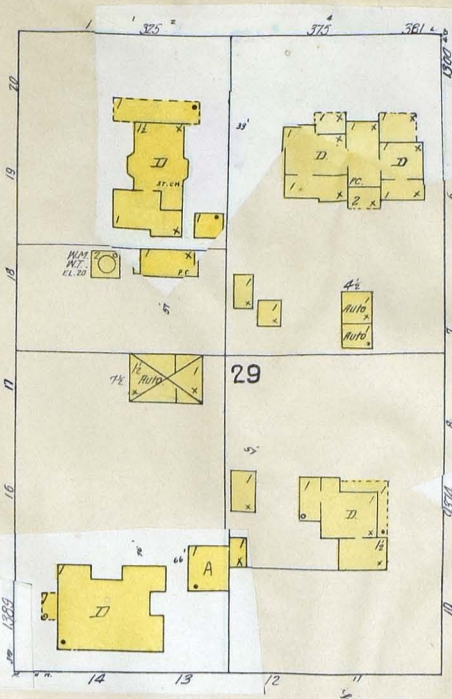
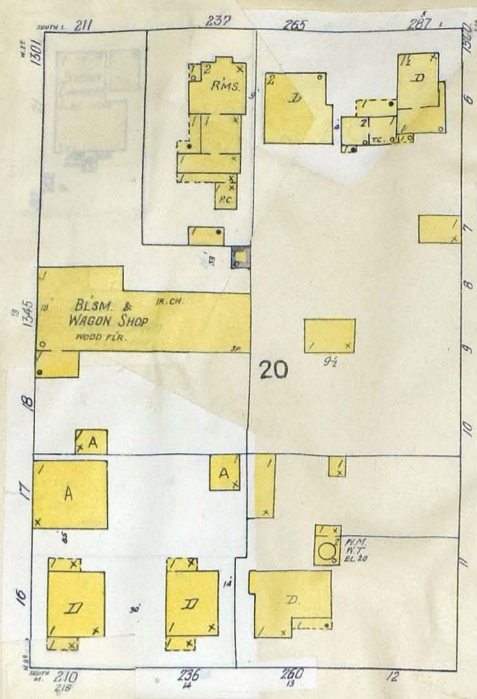
CITY HALL
FIRE DEPT.
REMY CONC.
OFFS.
HALL
WALL 15'
WALL 10'
WALL 8'
WALL 6'
WALL 4'
WALL 2'

DANCE HALL & ROLLER SKATING RINK
L.F.G.
BARDER
REST.
Meats
Cobbler
BATTERY & TIRE SHOP
PACIFIC TEL. & TEL. CO'S.
REPEATER STATION
REIN. CONC.
FIRE RATED
1909

MS LEOD

Scale of feet.

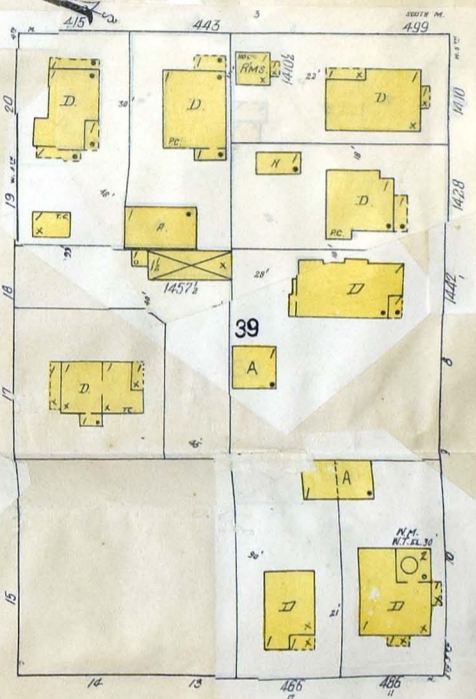
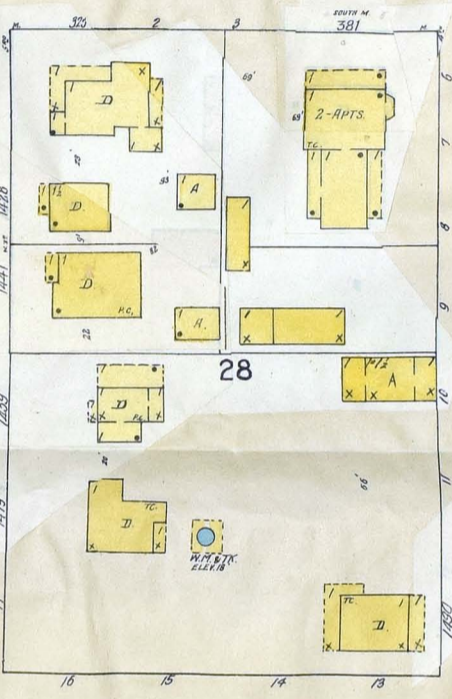
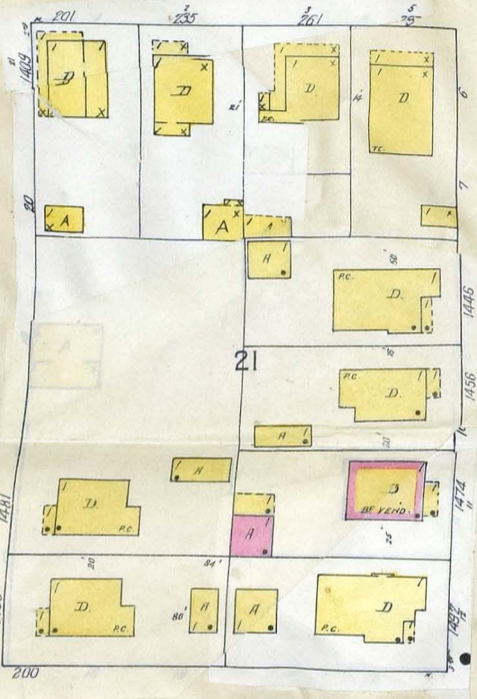
SOUTH L.



7

13

SOUTH M.



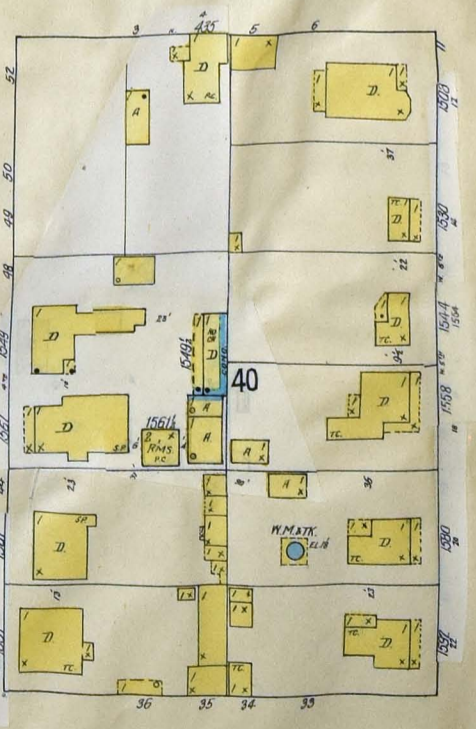
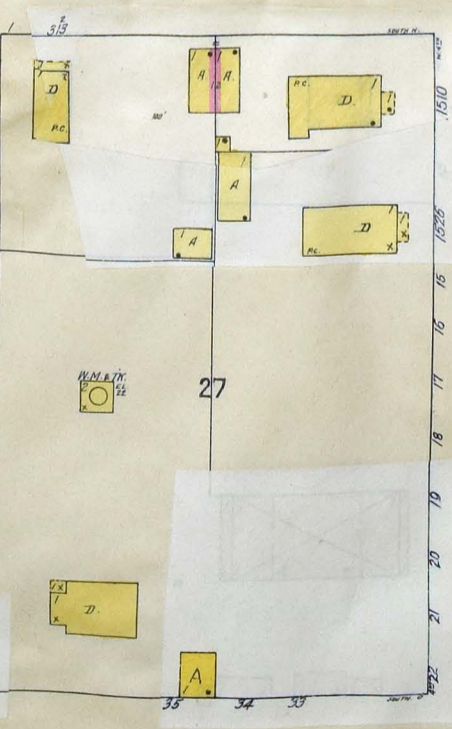
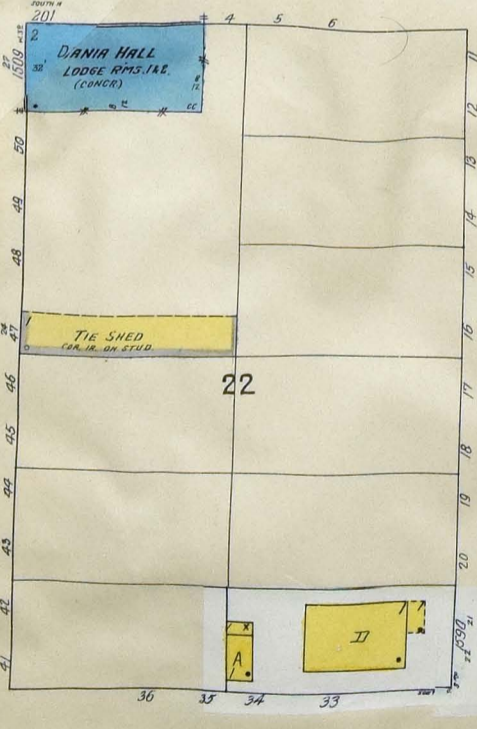
2ND
W

3RD
W

4TH
W

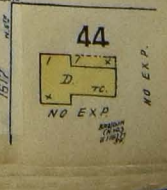
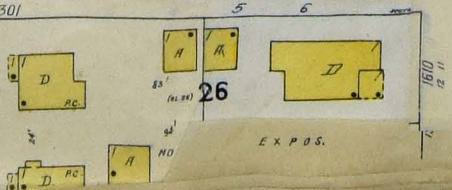
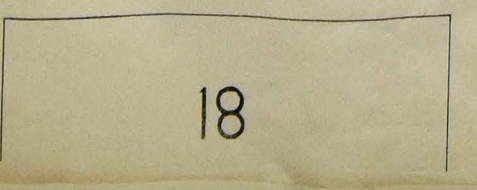
5TH
W

SOUTH N.



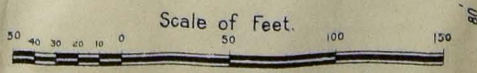
7

SOUTH O.



18

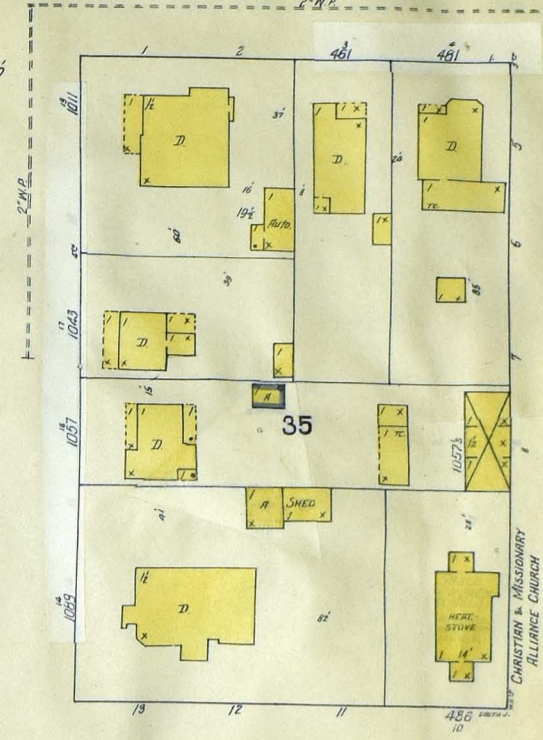
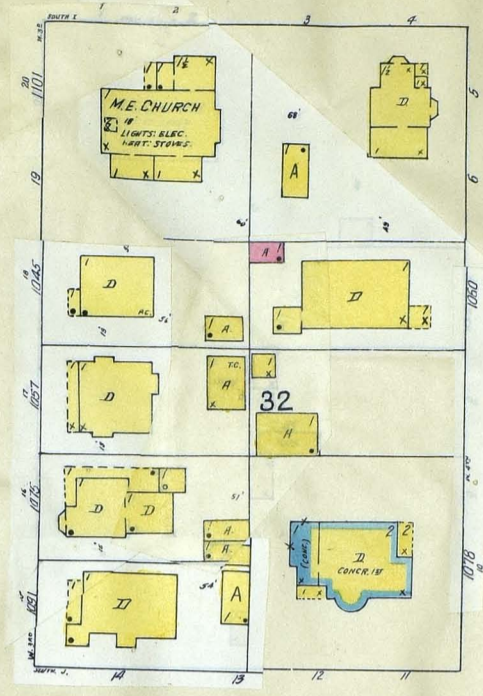
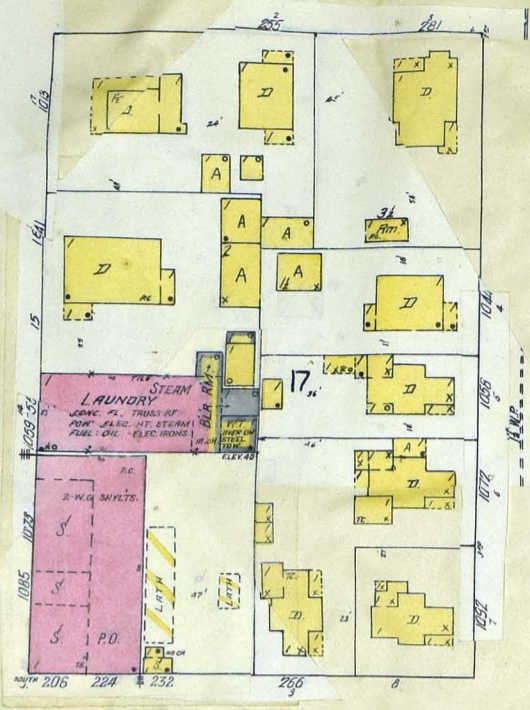
44



S. LIVERMORE AV. (1021E)

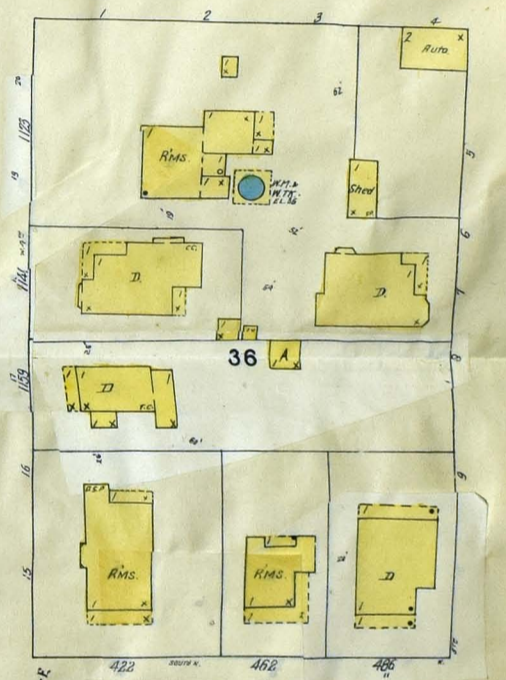
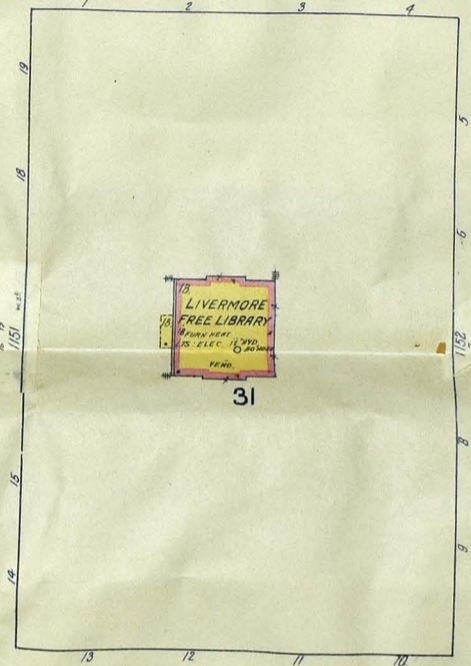
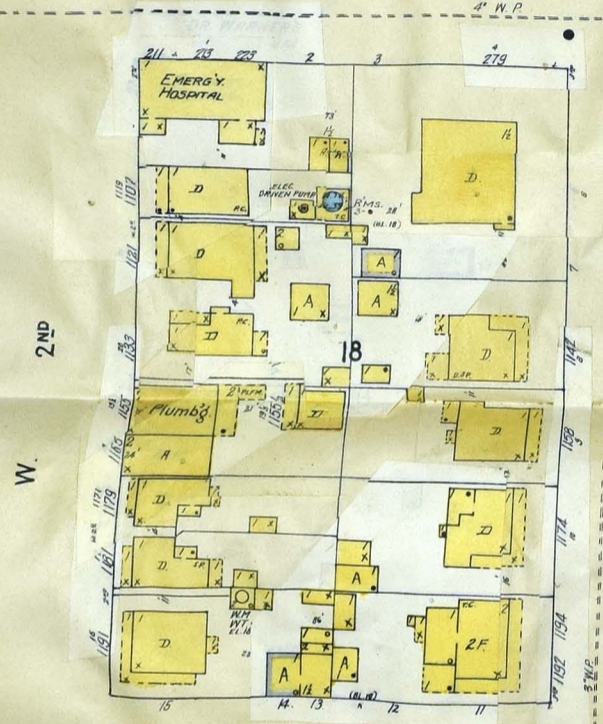
SOUTH I

MAY 1917 LIVERMORE CAL. COPYRIGHT 1917 BY SANBORN MAP CO.



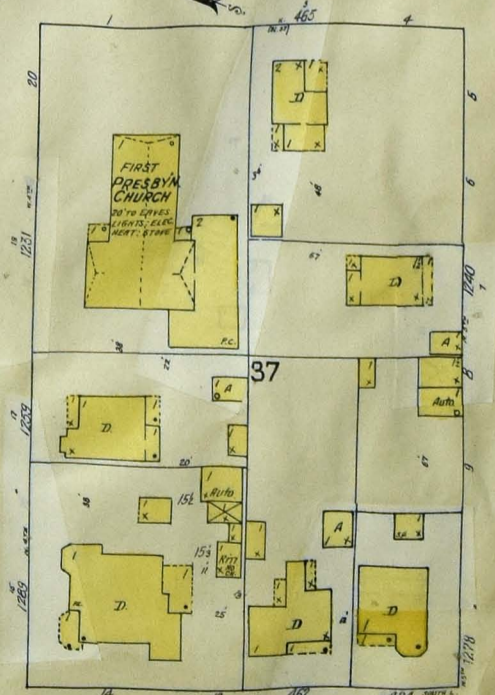
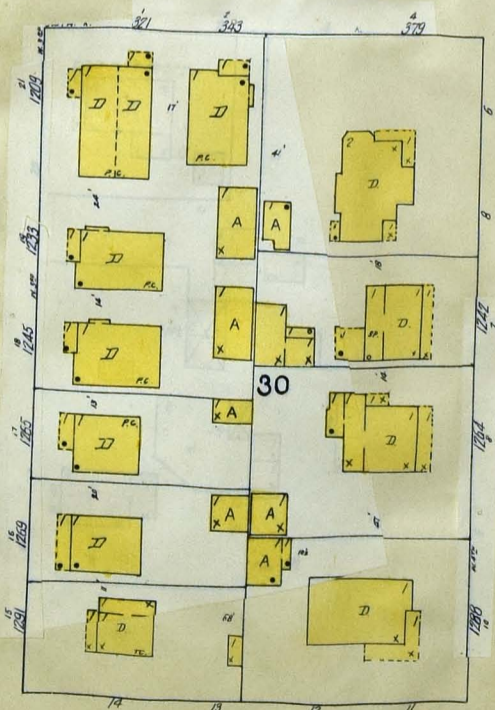
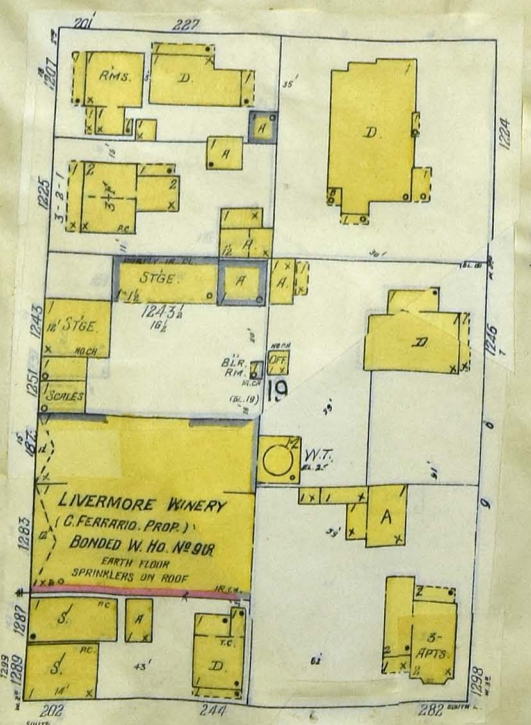
8

SOUTH J



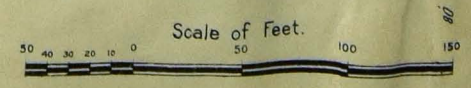
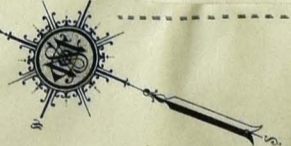
14

SOUTH K

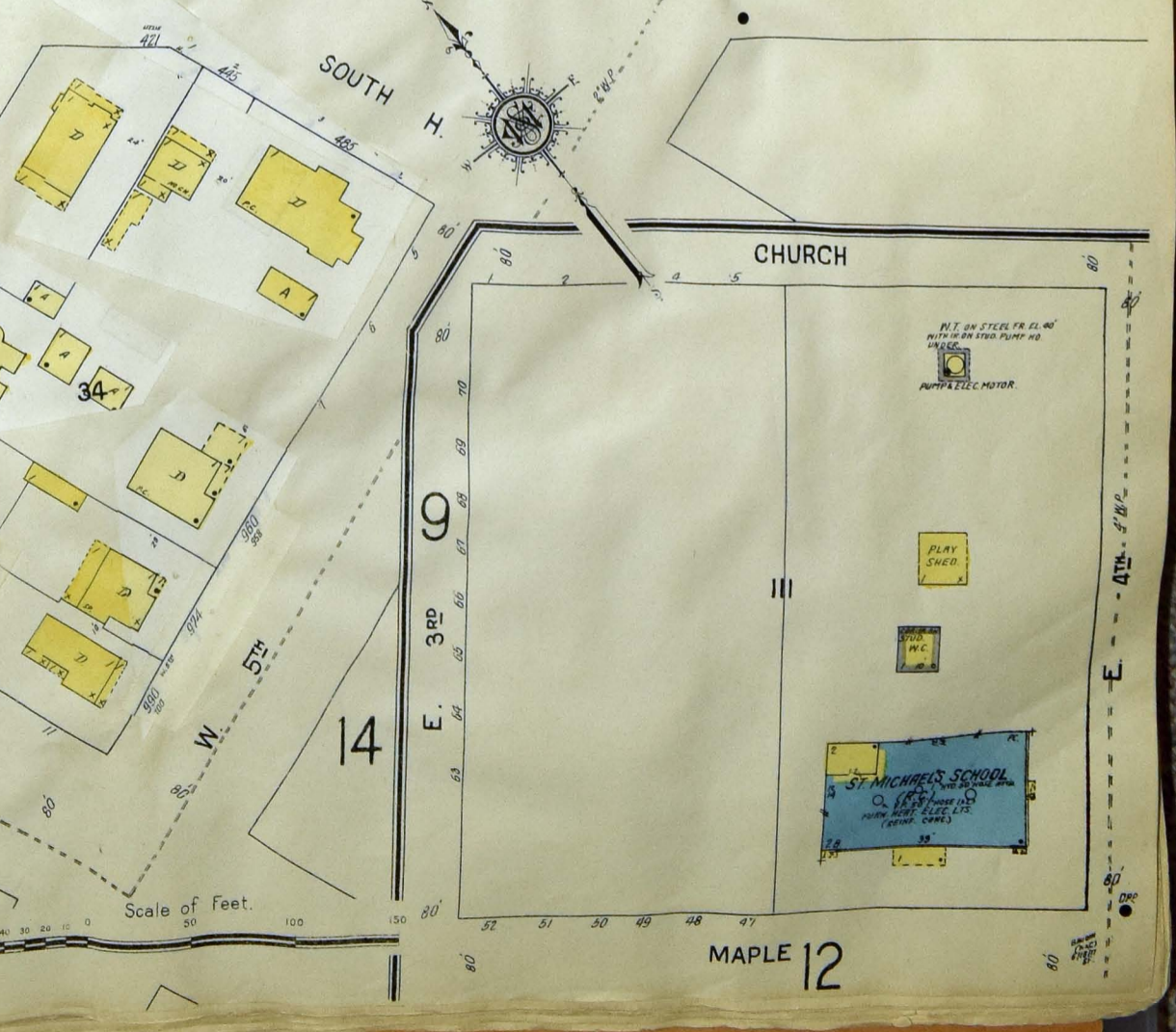
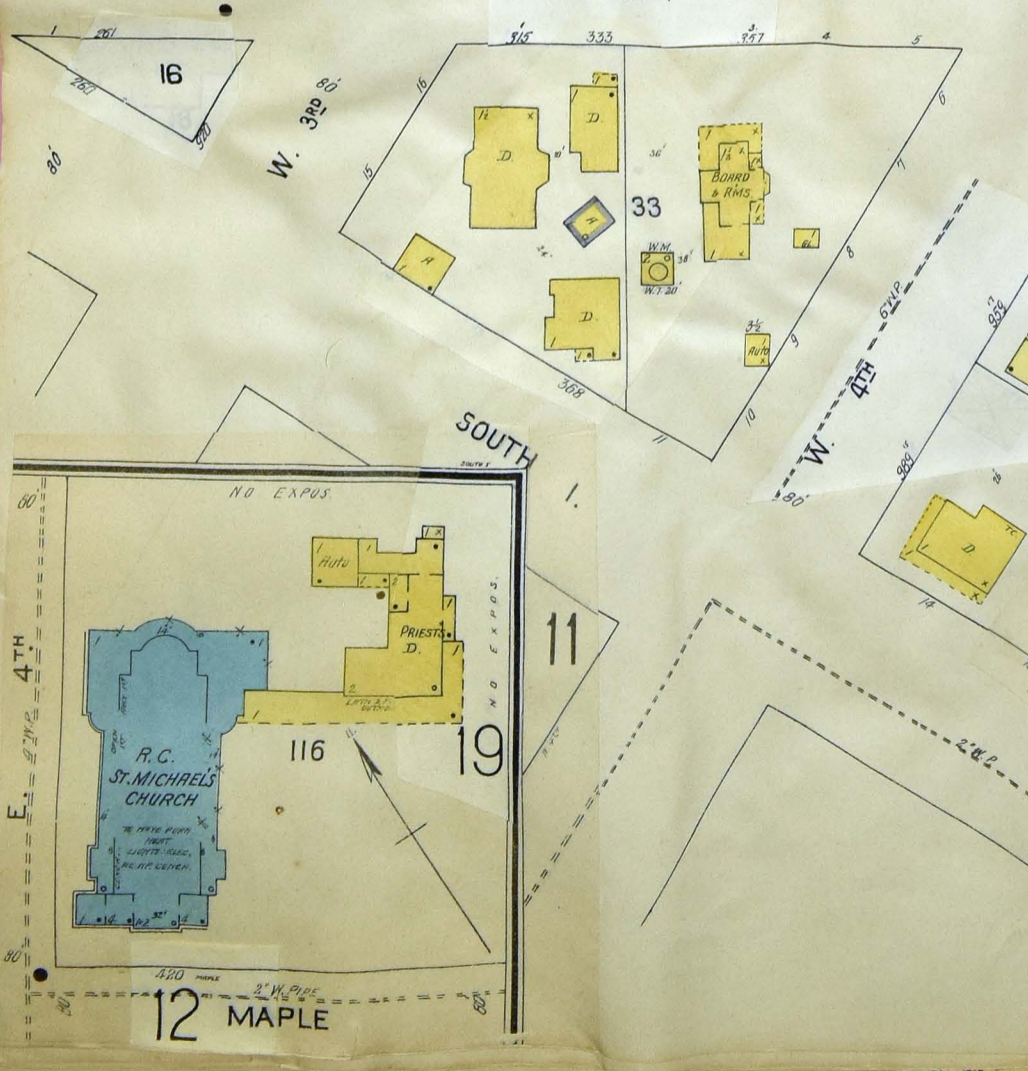
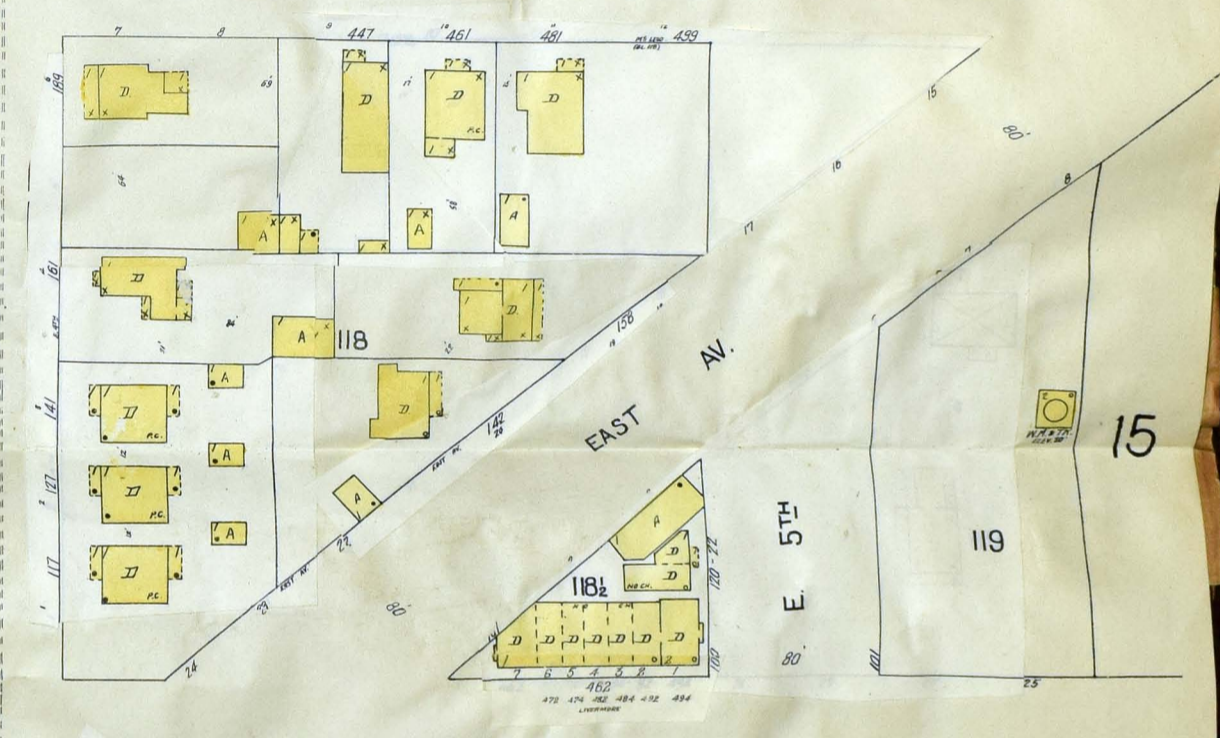
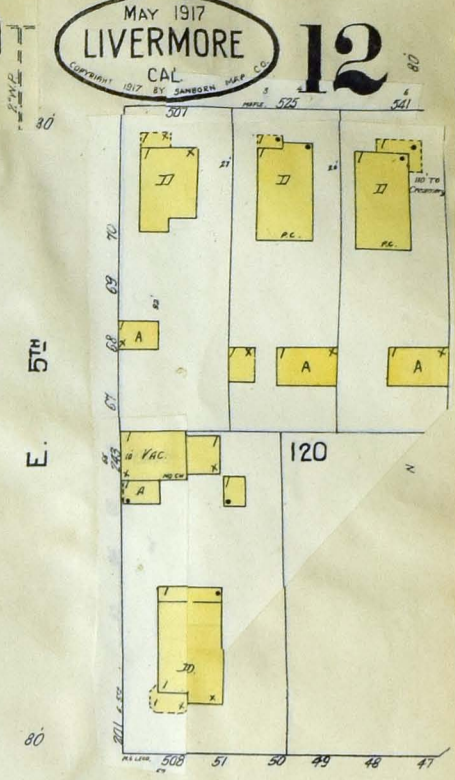
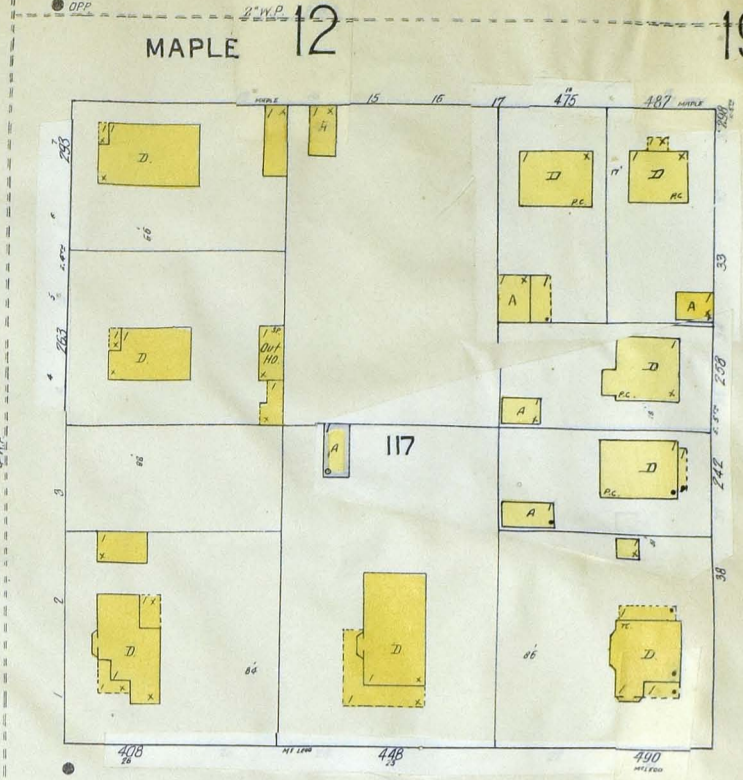
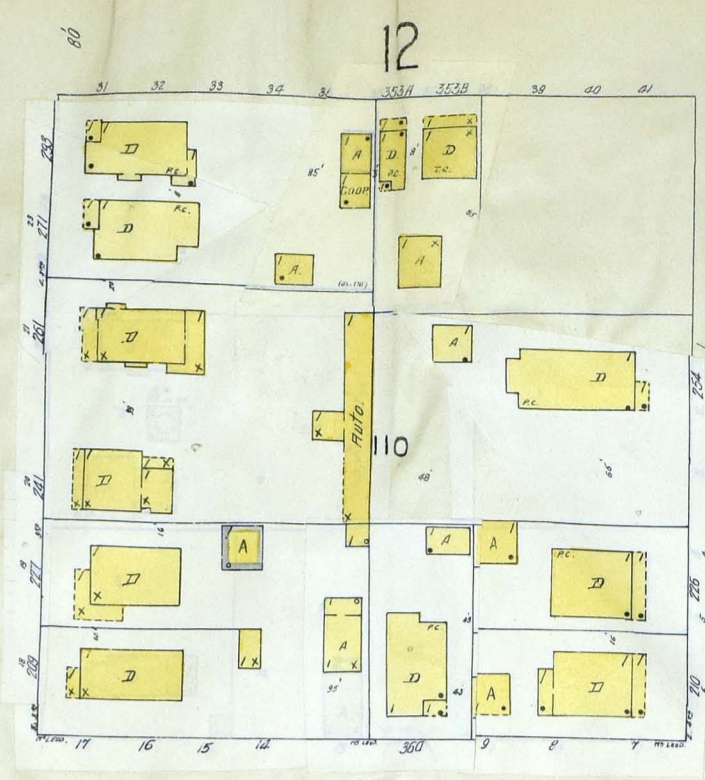


13

SOUTH L



10

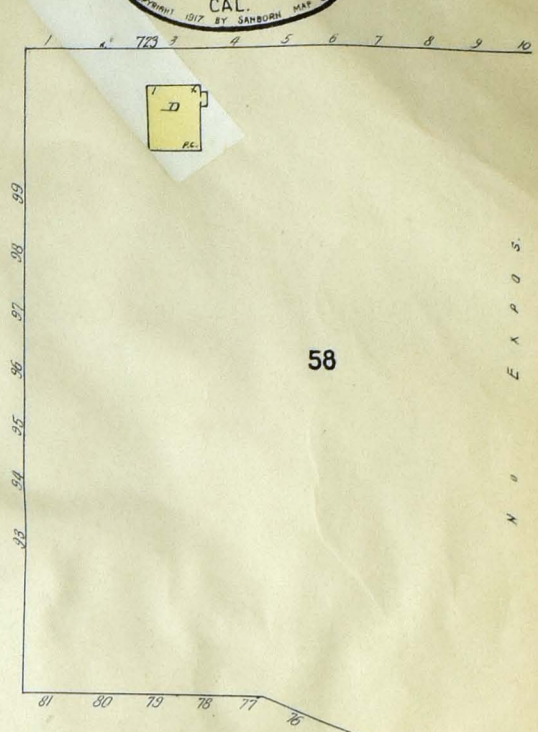
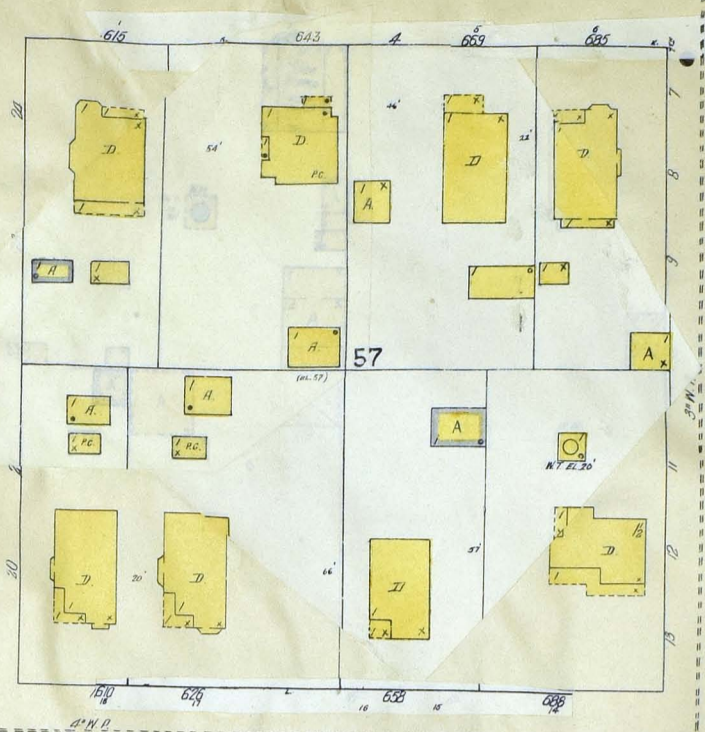
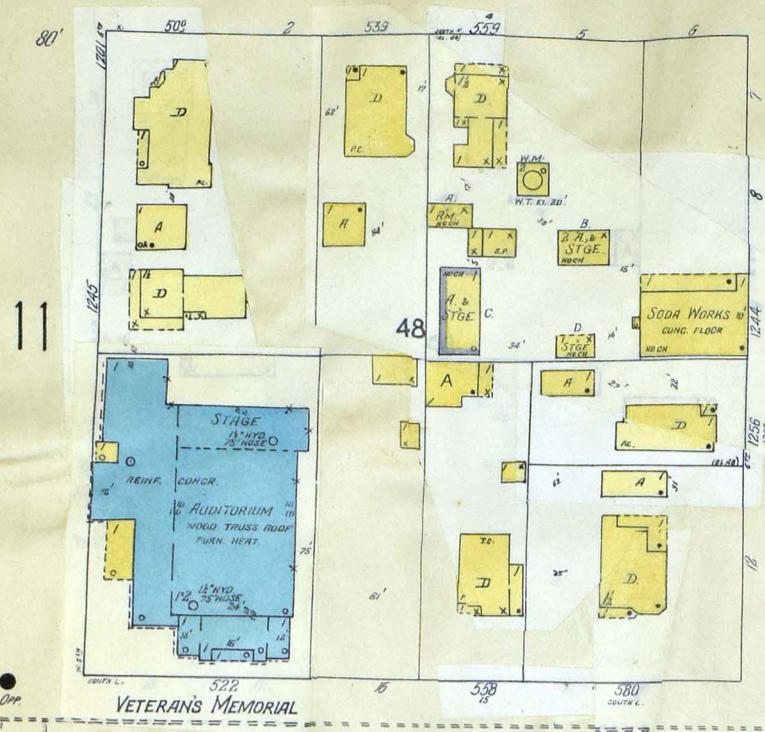


Scale of Feet.

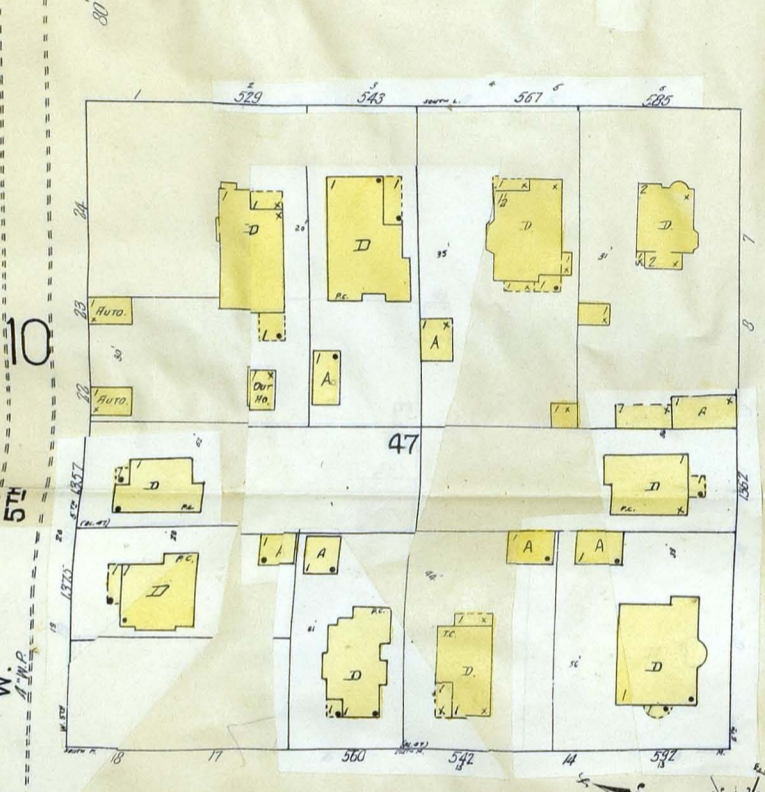
SOUTH K. 4

MAY 1917
LIVERMORE
CAL.
COMPILED 1917 BY SANBORN MAP CO.

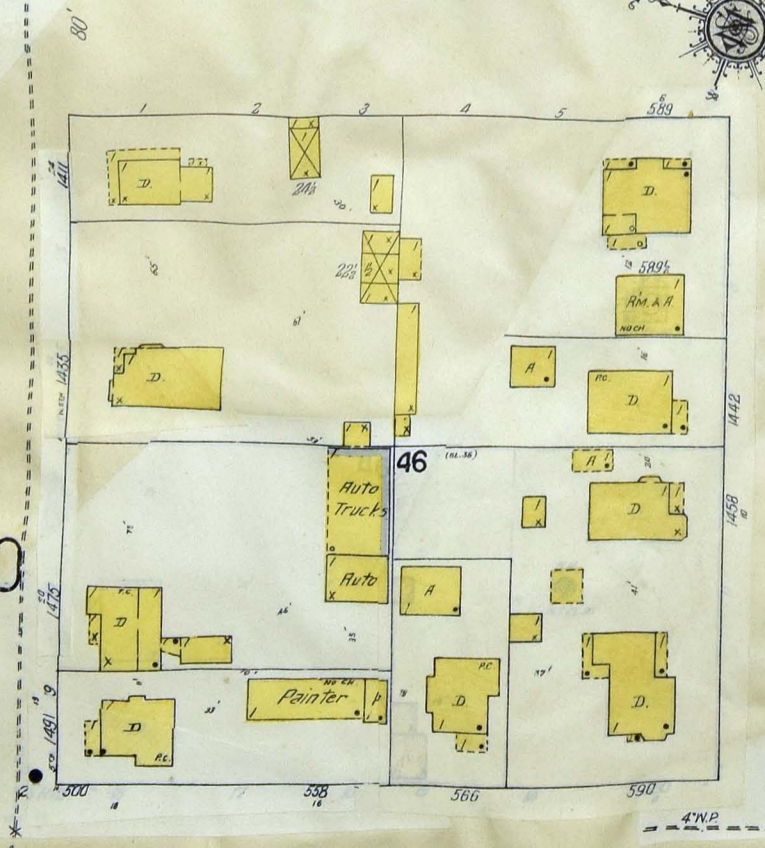
13



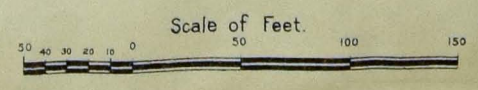
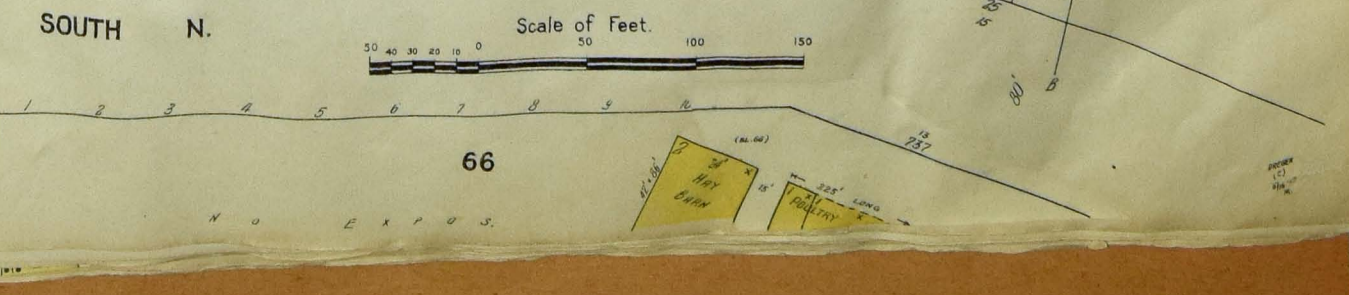
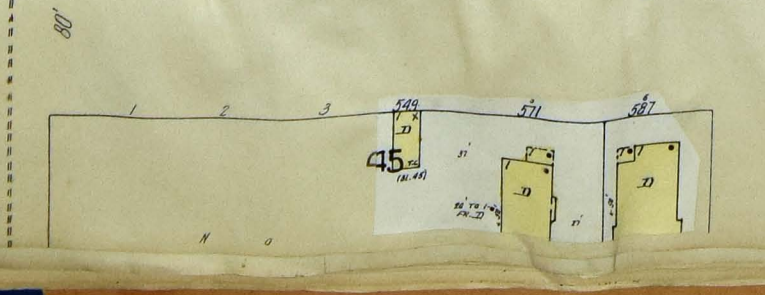
SOUTH L.



SOUTH M.



SOUTH N.



MAY 1917
LIVERMORE
CAL.

12

14

11

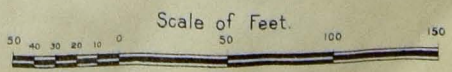
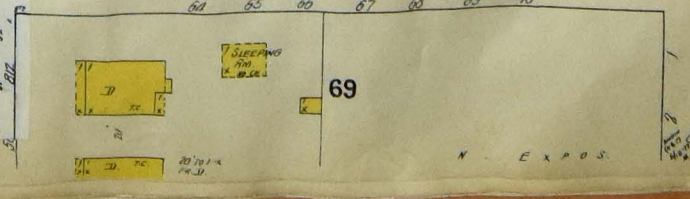
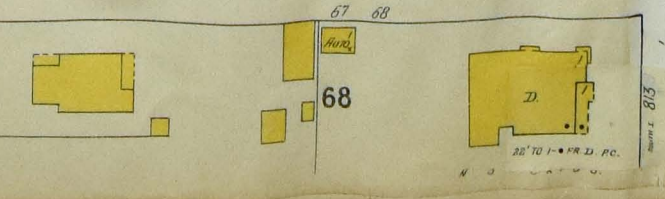
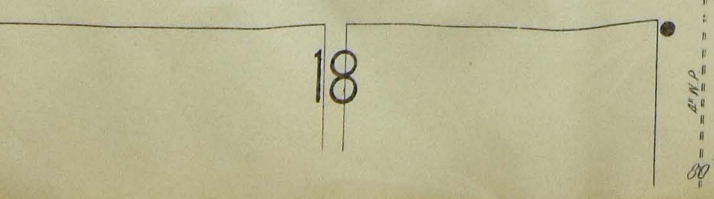
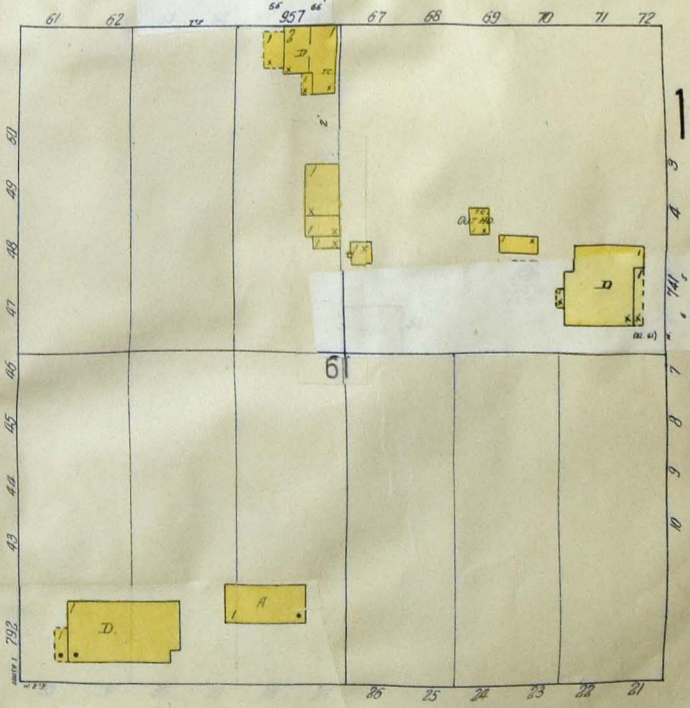
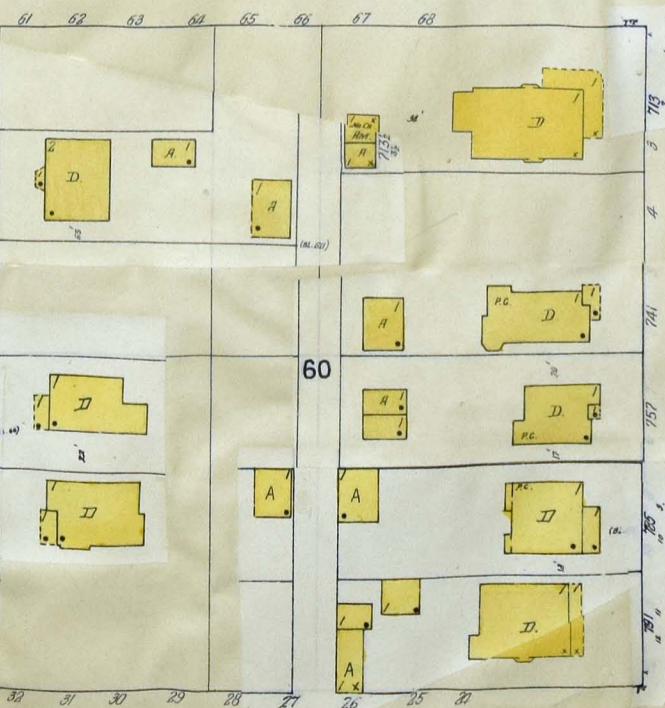
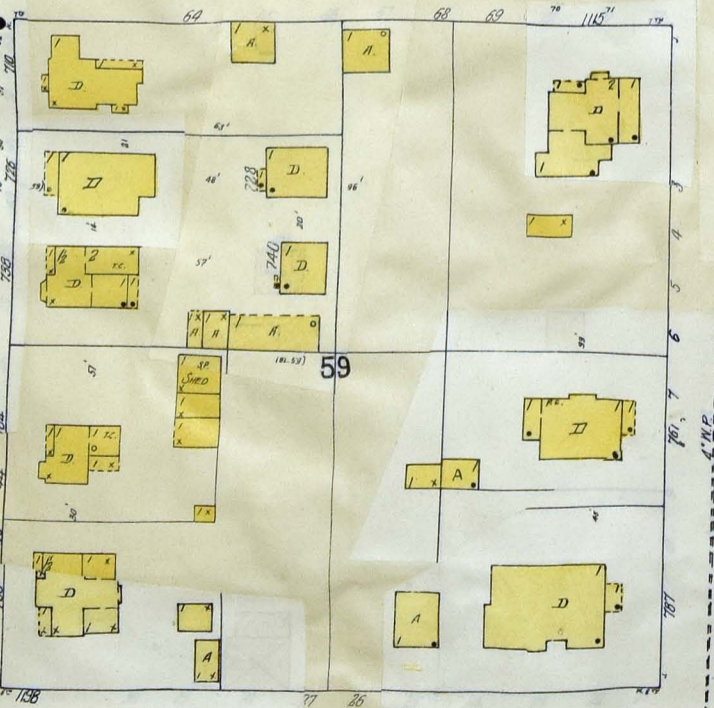
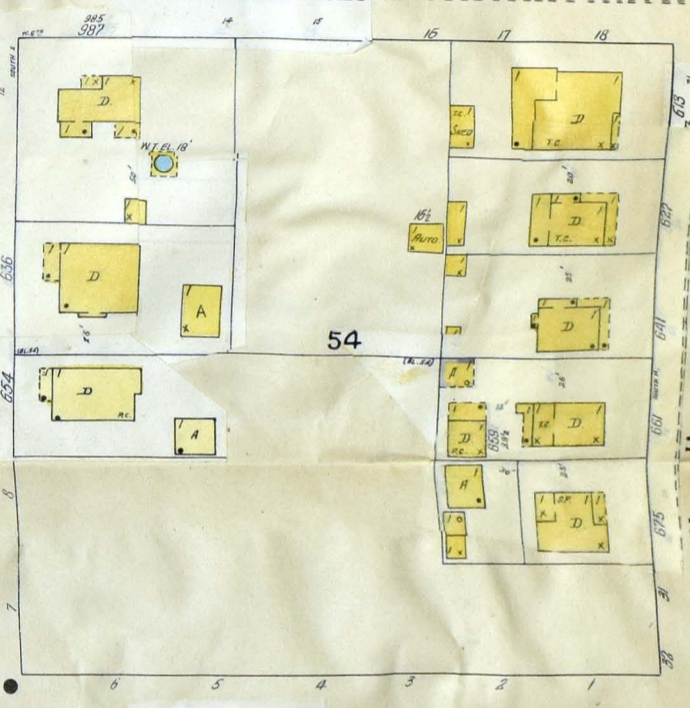
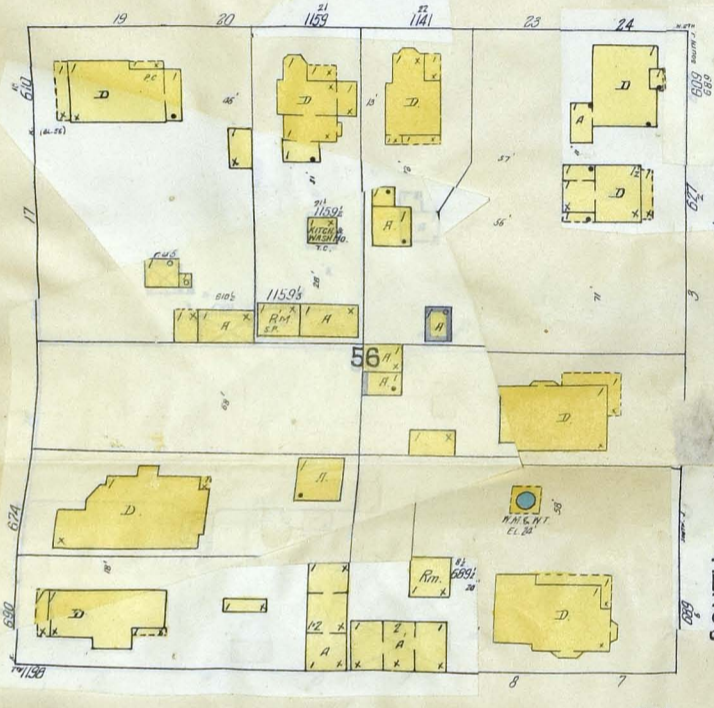
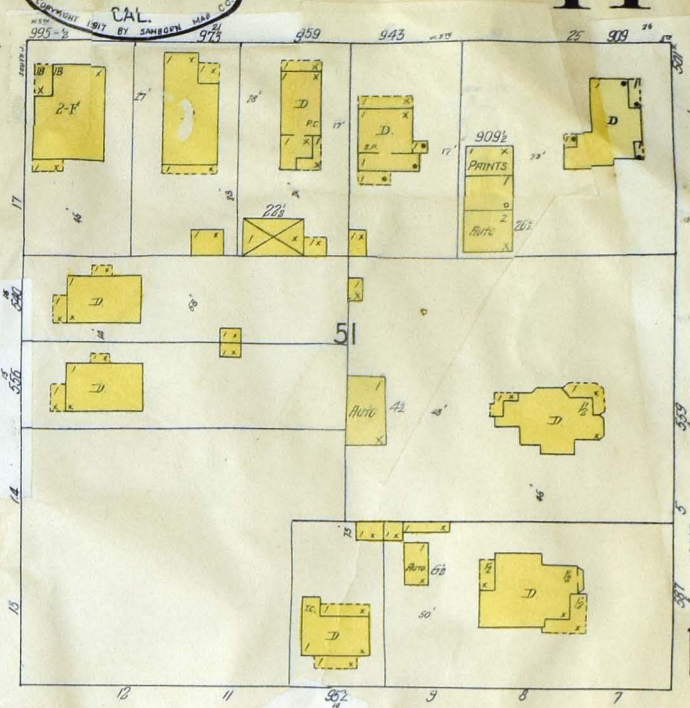
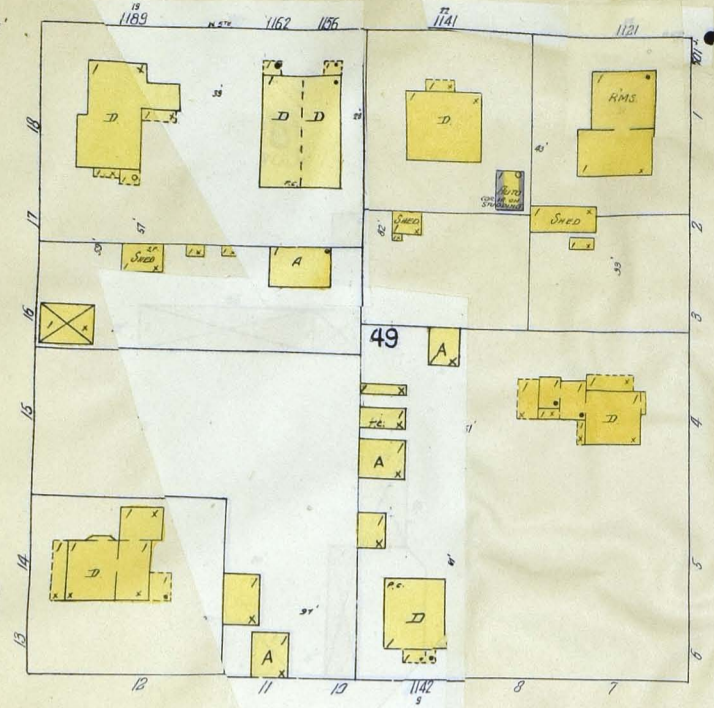
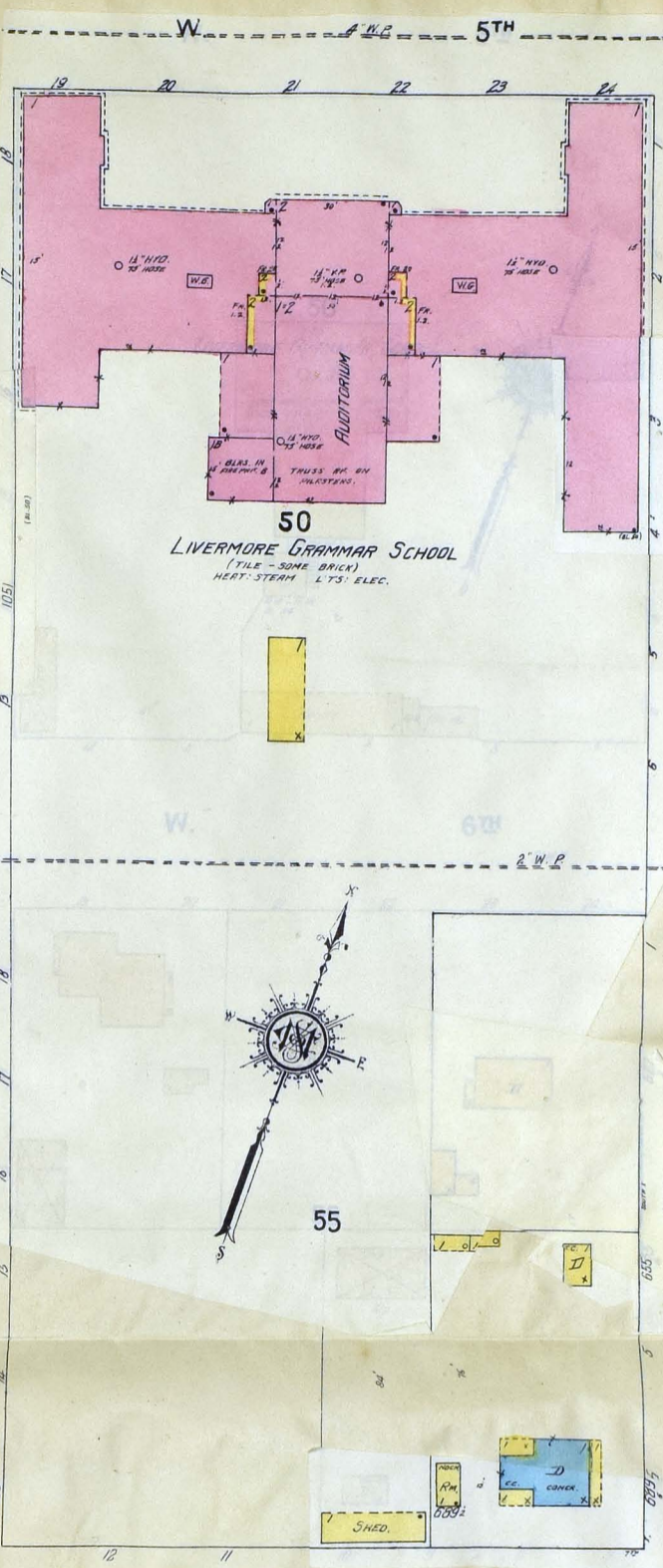
13

15

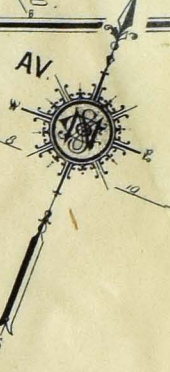
15

13

18



MAY 1917
LIVERMORE
CAL.
COPYRIGHT 1917 BY SANBORN MAP CO.



14

12

15

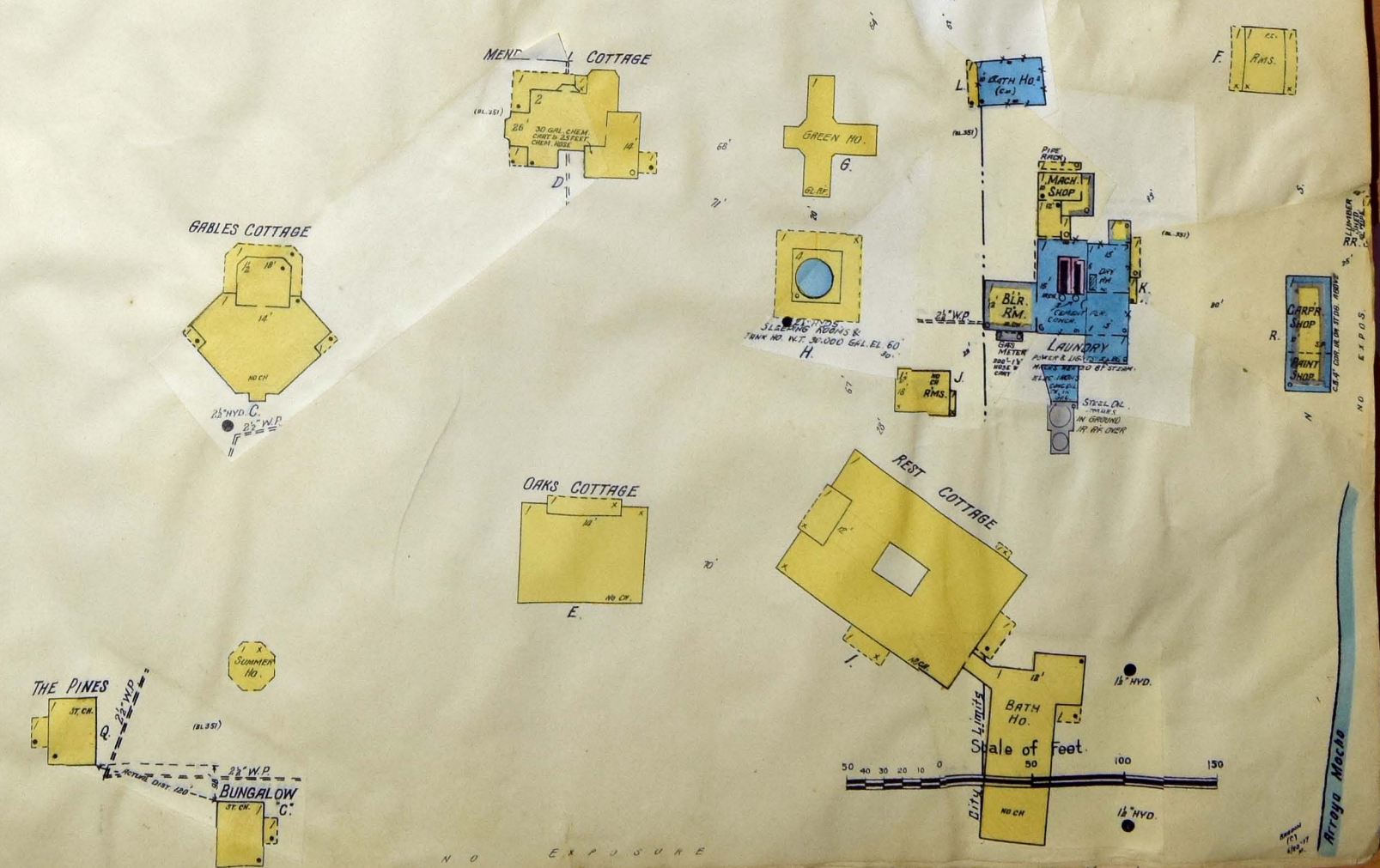
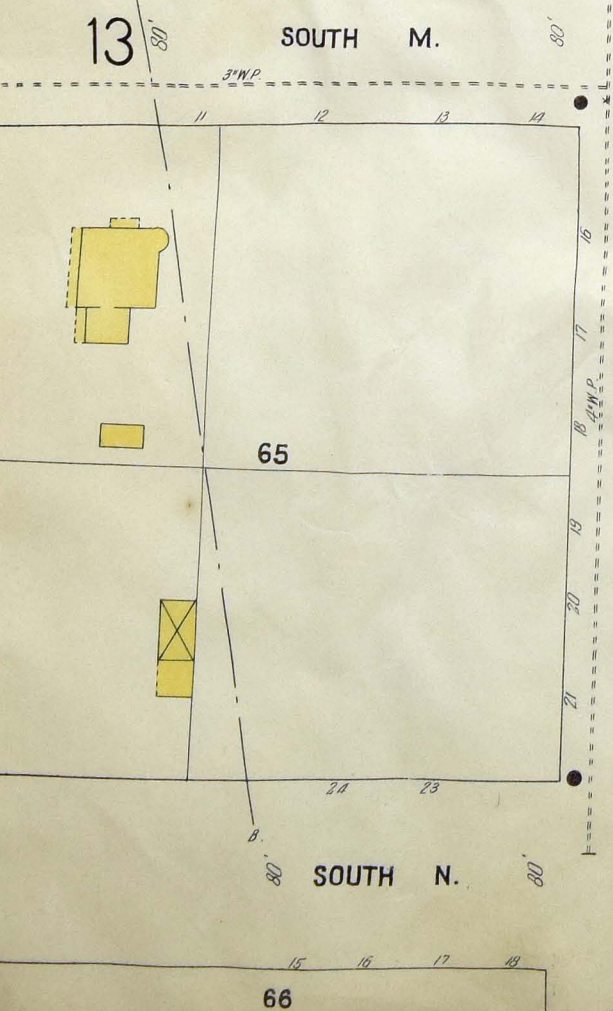
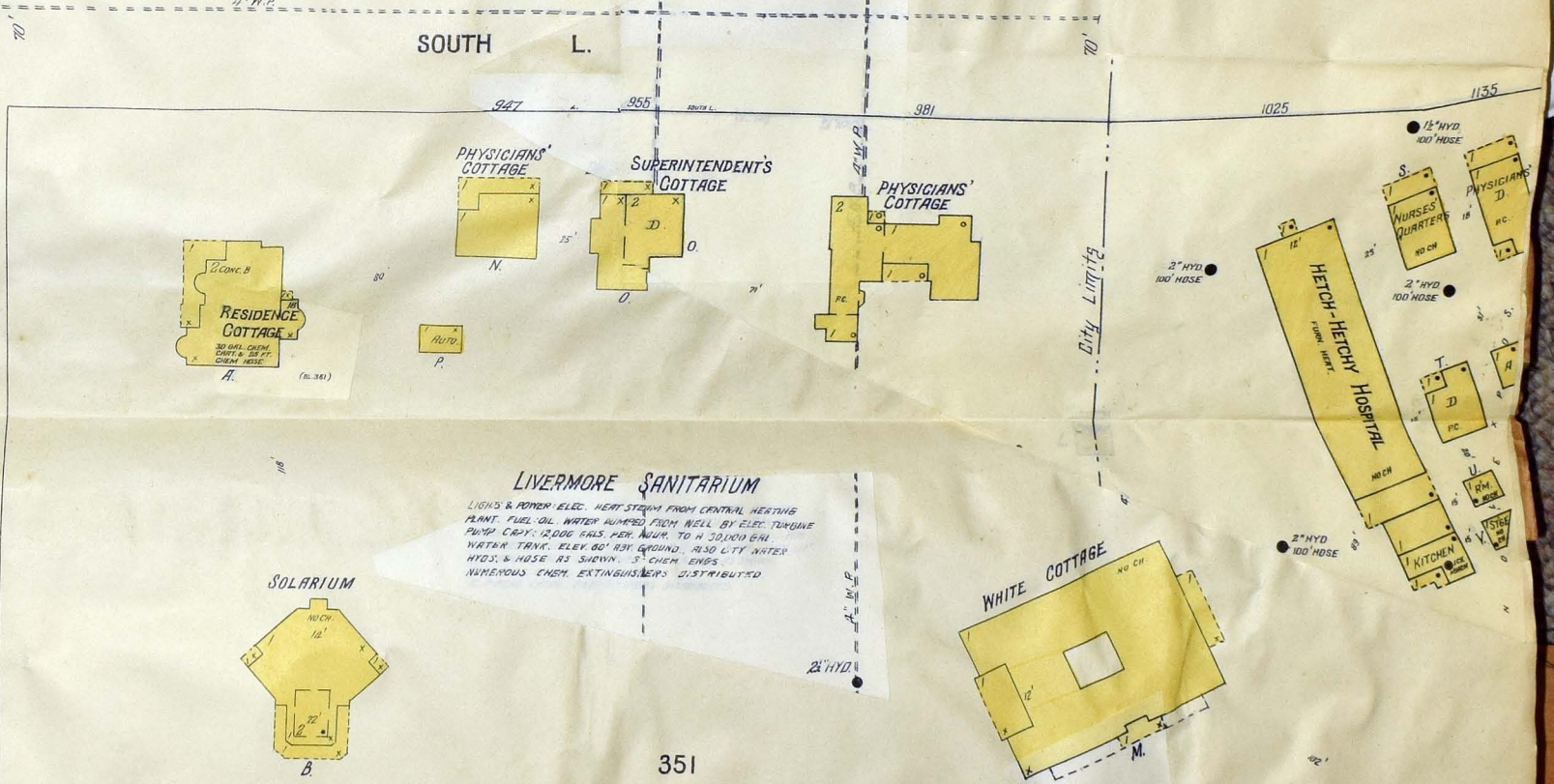
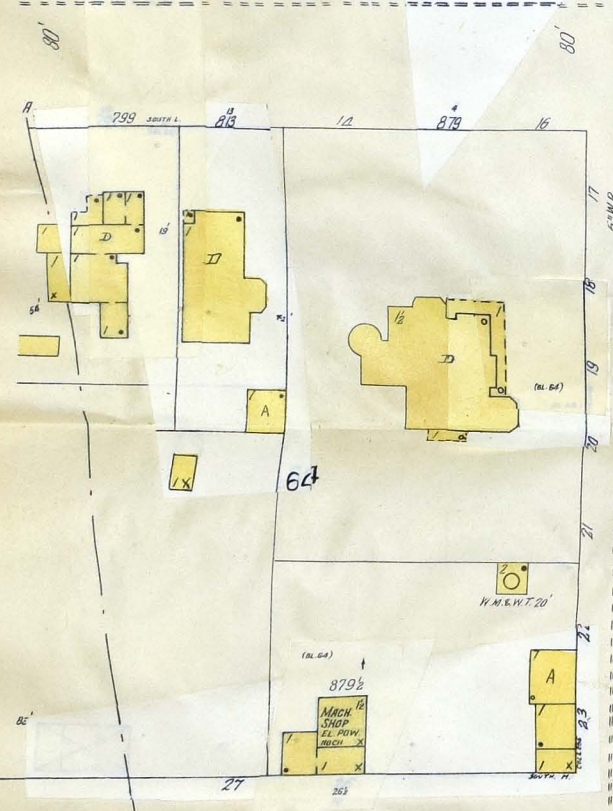
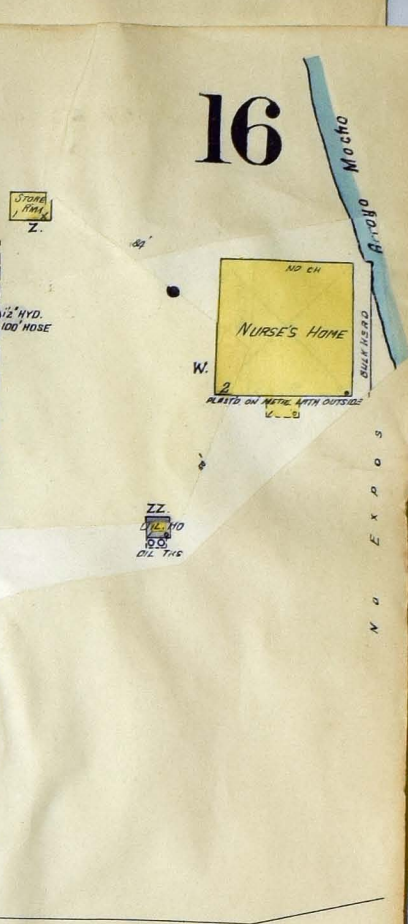
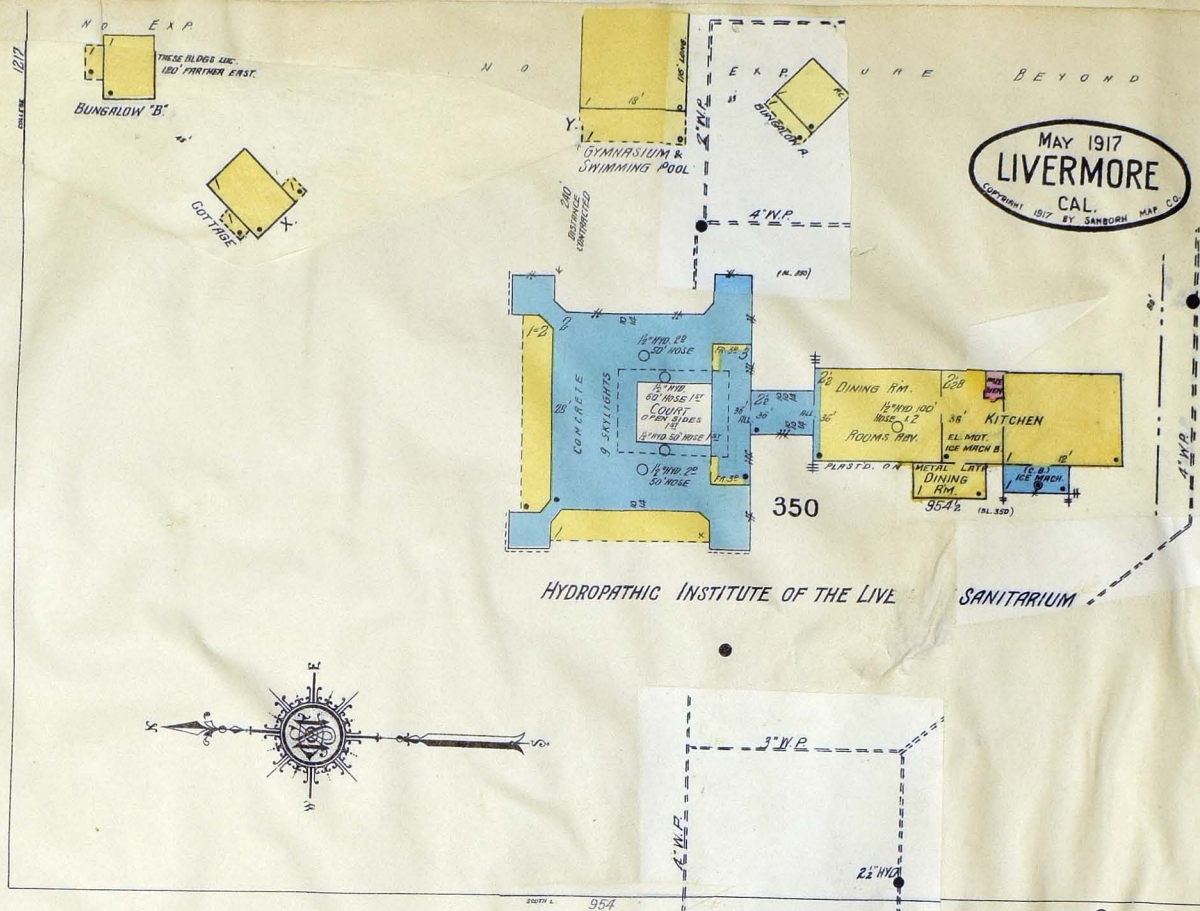
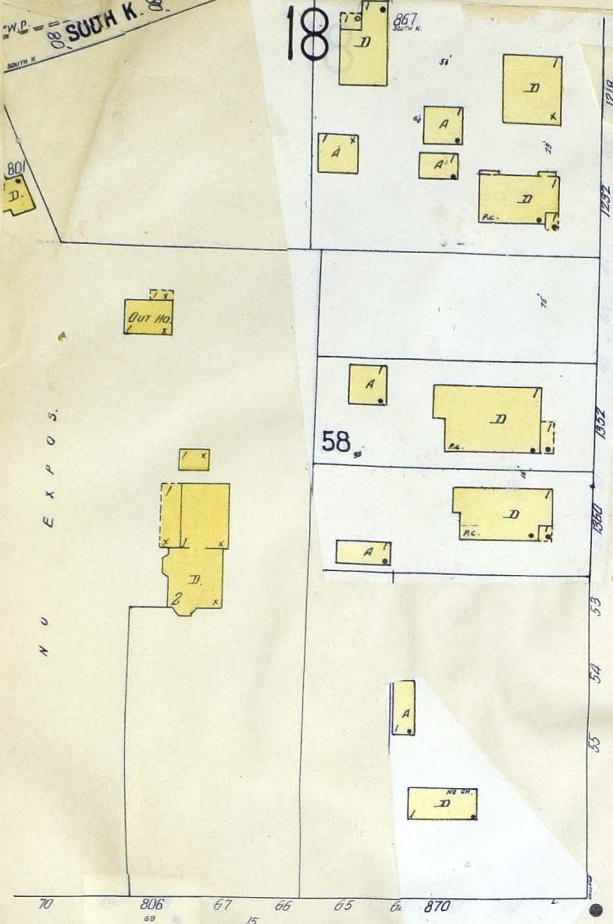
15

19

14

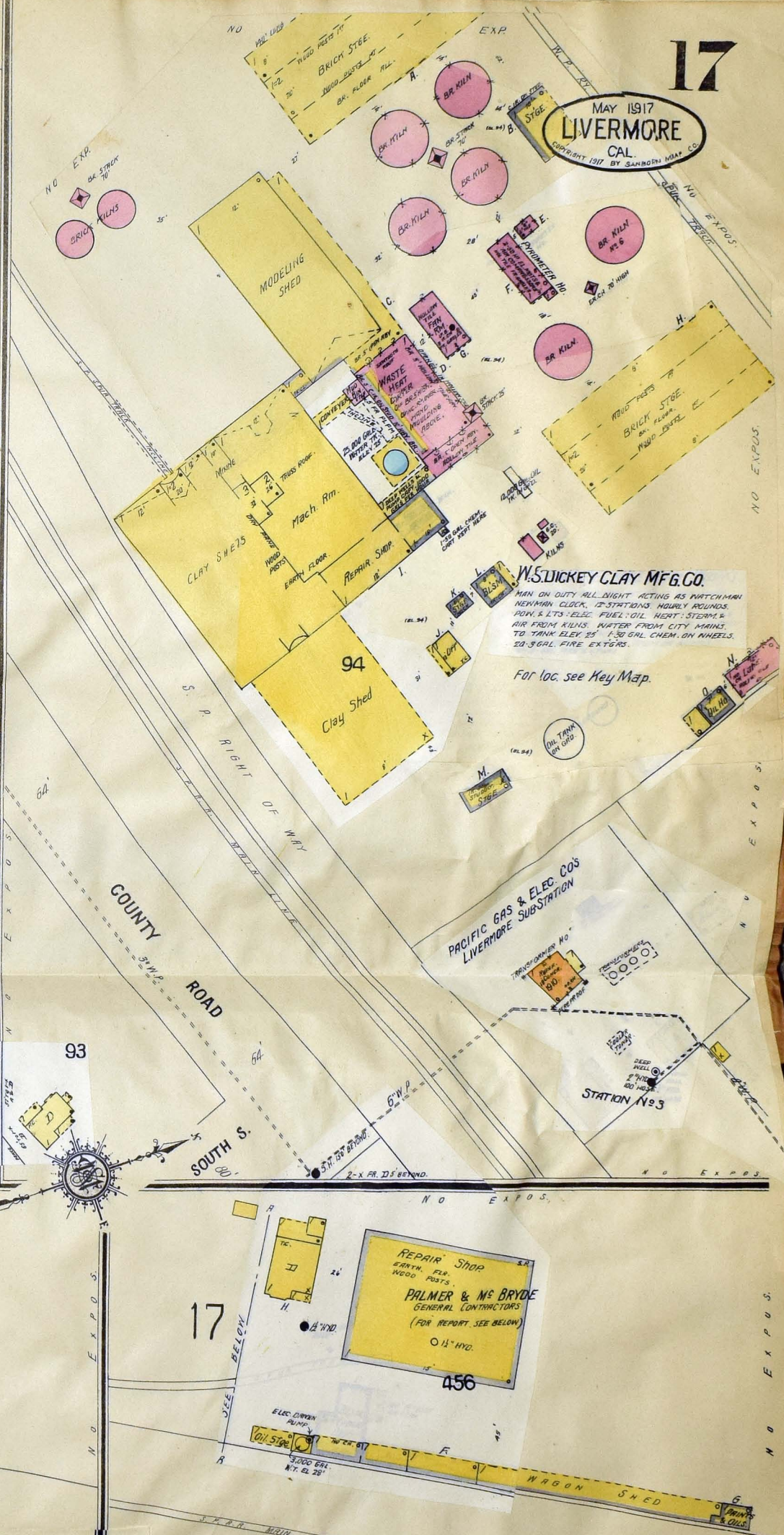
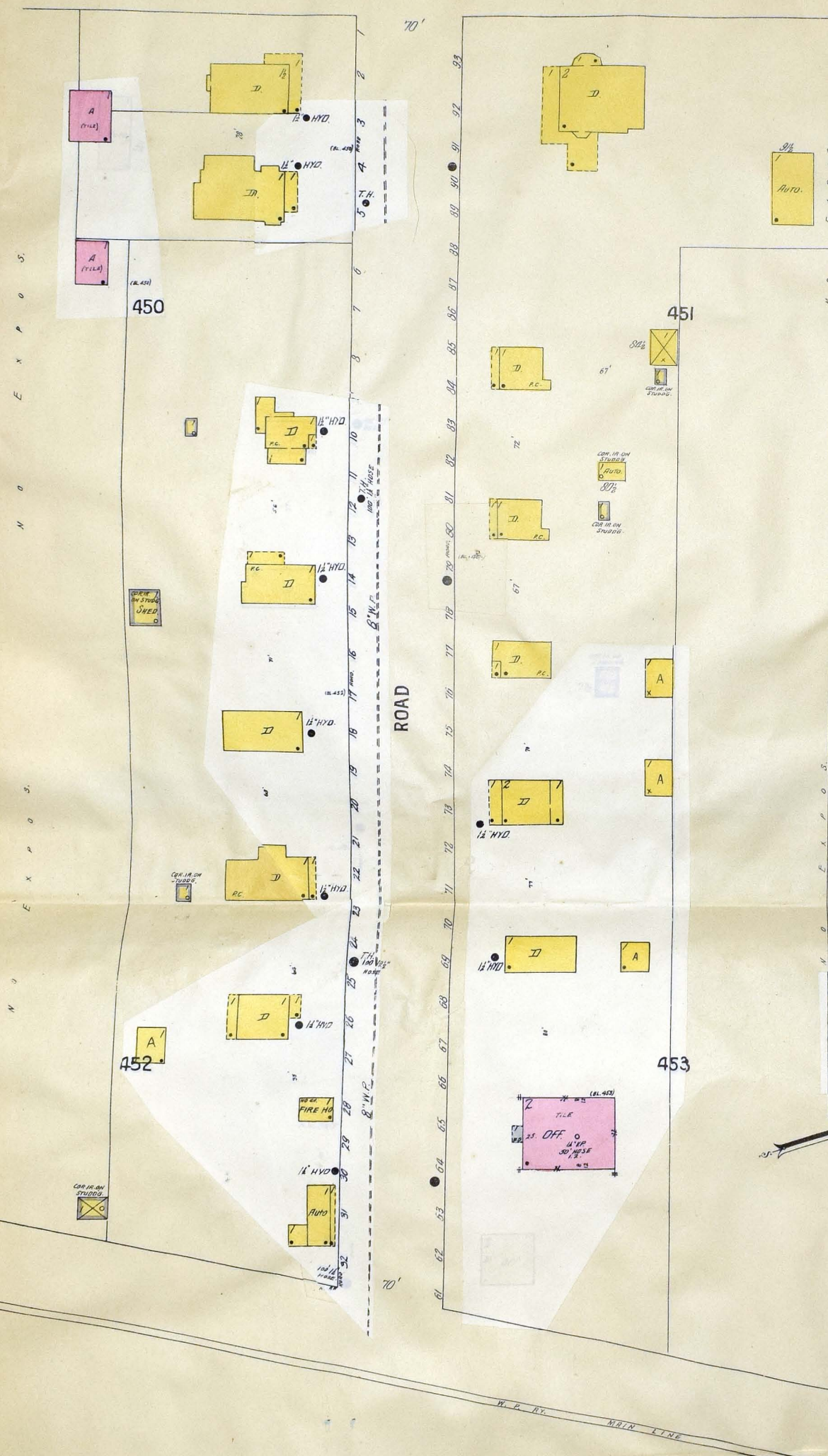
Scale of Feet.
0 50 100 150

MAY 1917
LIVERMORE
CAL.
COPYRIGHT 1917 BY SANBORN MAP CO.



Mocho
Arroyo Mocho

MAY 1917
LIVERMORE
CAL.
COPYRIGHT 1917 BY SANBORN MAP CO.



W.S. DICKEY CLAY MFG. CO.
MAN ON DUTY ALL NIGHT ACTING AS WATCHMAN
NEWMAN CLOCK, 12 STATIONS HOURLY ROUNDS
P.W. & L.T.S. ELEC. PUMP, OIL HEAT, STEAM &
AIR FROM KILNS, WATER FROM CITY MAINS
TO TANK ELEV. 25' 1-30 GAL. CHEM. ON WHEELS.
20-30 GAL. FIRE EXT'RS.

For loc. see Key Map.

**PACIFIC GAS & ELEC. CO'S
LIVERMORE SUBSTATION**

STATION No. 3

REPAIR SHOP
EARTH. P.L.P.
WOOD POSTS.
PALMER & Mc BRYDE
GENERAL CONTRACTORS
(FOR REPORT SEE BELOW)

COAST MANUFACTURING & SUPPLY CO'S.
W. HO. OFFICE & DWELLINGS.

WATER SUPPLY: NEWMAN CLOCK 12 STATIONS HOURLY ROUNDS
1- STATION AT 10' AT WARE HO. WATER FROM 200,000 GAL.
RESERVOIR ELEV. 107'. PRIMARY SOURCE FOR SPRINKLERS.
1-30,000 GAL. TANK. LOC. ABOUT 1/4 MILE S. OF WARE HO.
TANK FILLER FROM WELLS BY 4 ELEC. DRIVEN PUMPS.
PRESSURE FROM TANK 50 LBS. DIRECT PRESSURE FROM PUMPS
IF NECESSARY. HYDOS & HOSE AS SHOWN.
1- FORD 4. R. TRUCK CARRYING 2-35 GAL. CHEM. & 250'
CHEM. HOSE & 200' 2 1/2" FIRE HOSE.

PORTION OF THIS SHEET EAST OF
W.P. RR. MAIN LINE NOW SHOWN ON
SHEET 21.

21

LOCATED 1/2 MILE EAST OF LIVERMORE

COAST MFG. & SUPPLY CO'S.
WARE HO.
COTTON, CLOTH, TAPE & CLAY.
CART. IRON ON STUDDING

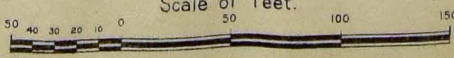
PALMER & Mc BRYDE
GENERAL CONTRACTORS,
EQUIPMENT YARD.

PALMER & Mc BRYDE
GENERAL CONTRACTORS,
EQUIPMENT YARD.

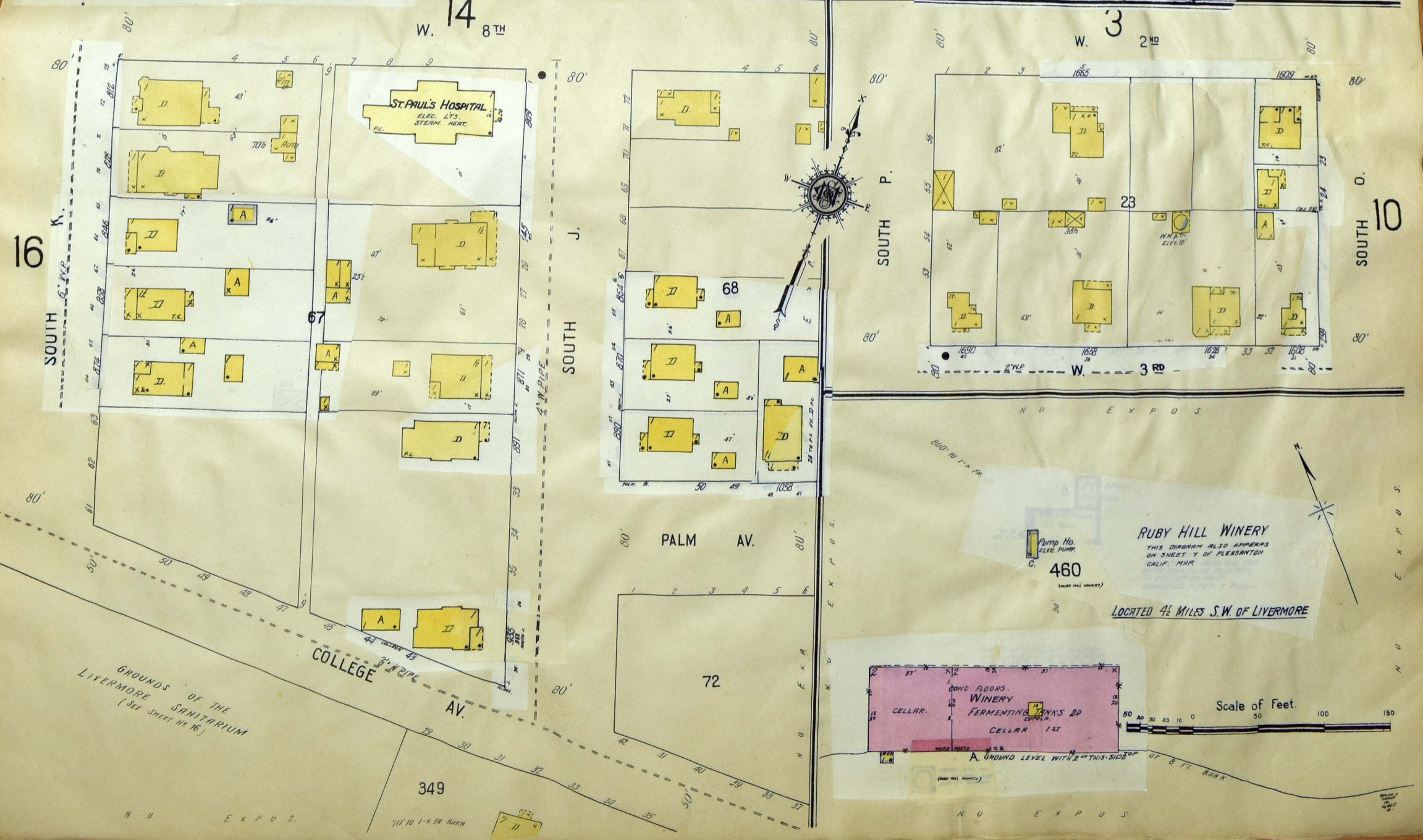
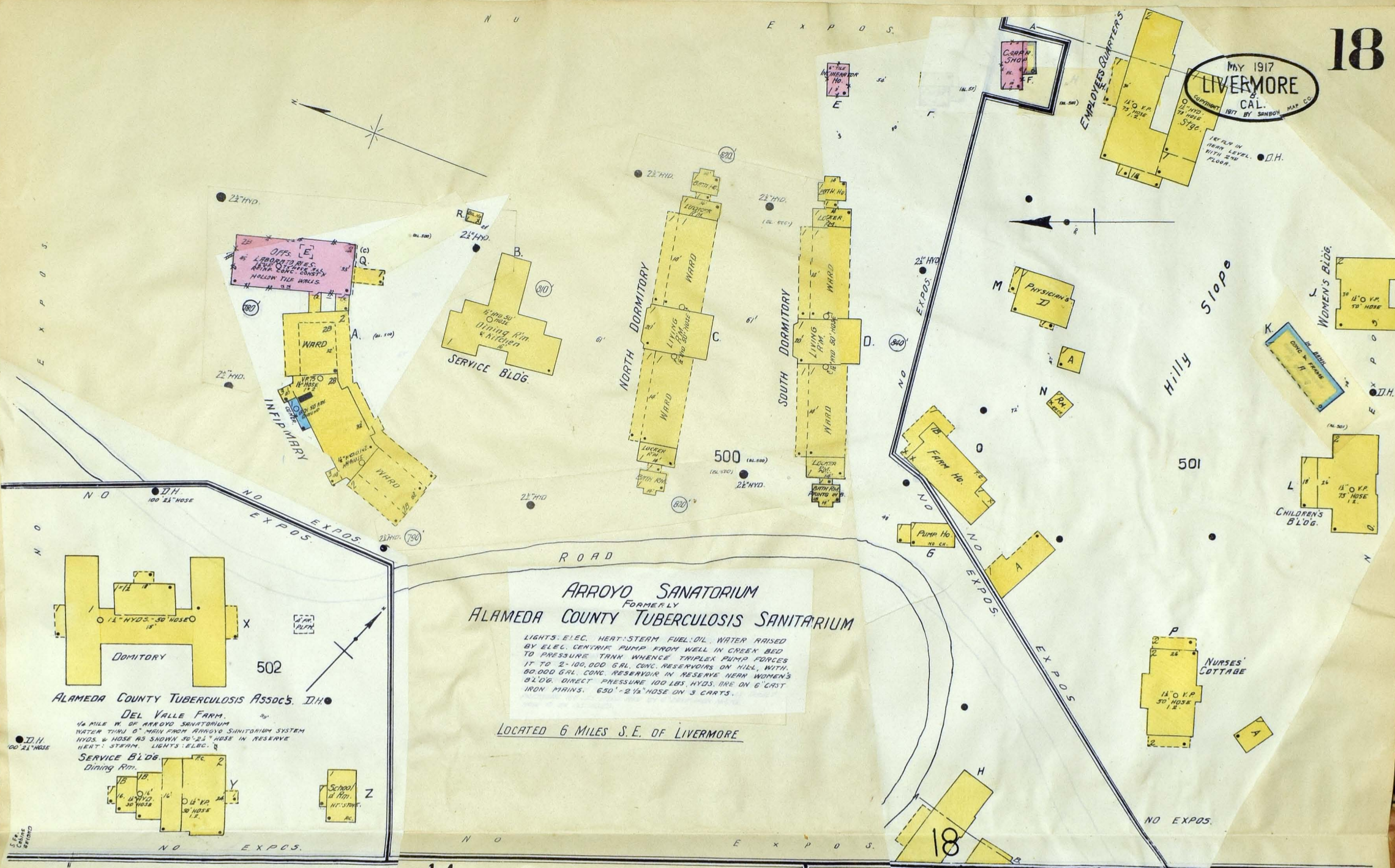
NO WATCHMAN, FOREMAN LIVES ON PREMISES.
PUMPS & LINES ELEC. NO HEAT, WATER FROM
2000 GAL. TANK FILLED FROM WELL BY SMALL
ELEC. DRIVEN PUMP HYDOS & HOSE AS SHOWN.
3-22 GAL. CHEM. EXT'RS. DISTRIBUTED.
1-30 GAL. CHEM. EXT'RS.

COAST MFG. & SUPPLY CO'S
FUSE WORKS BEYOND
EXPOSURE

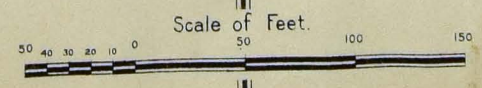
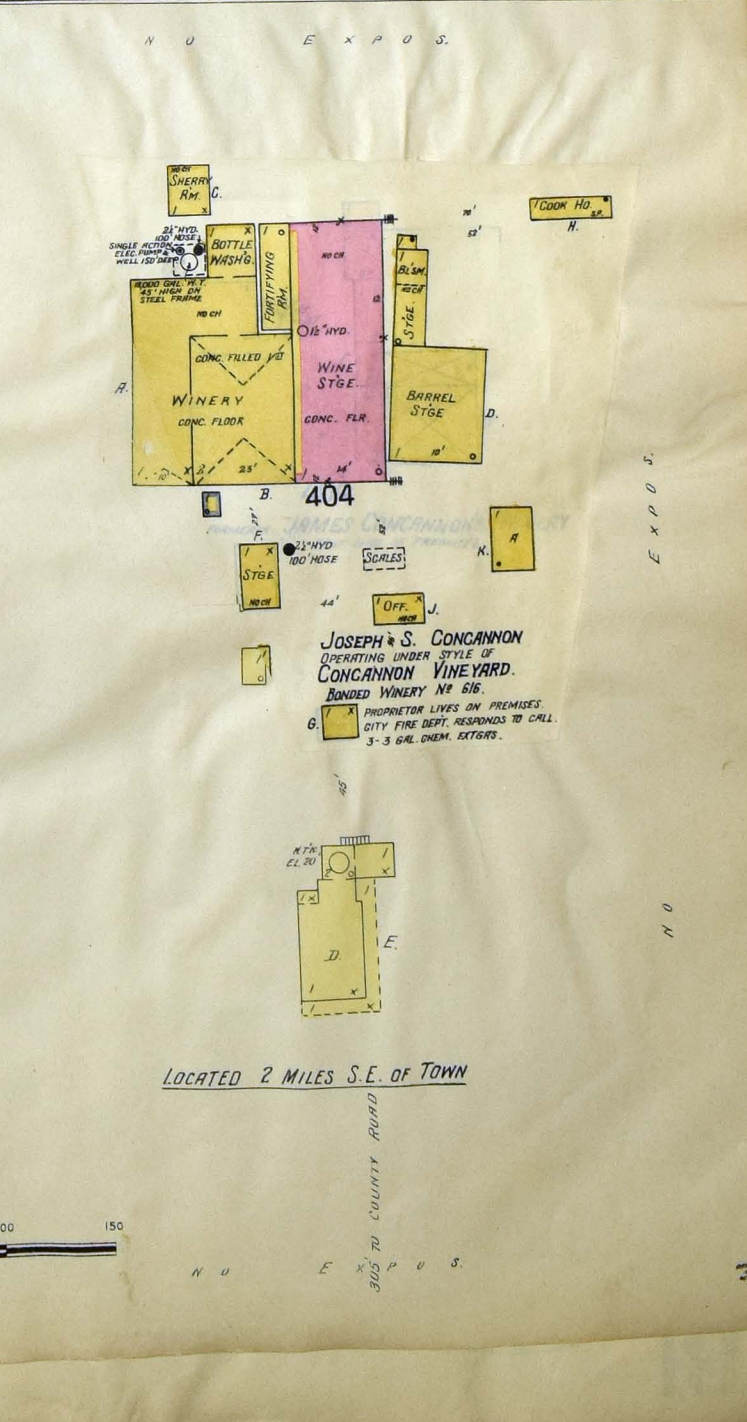
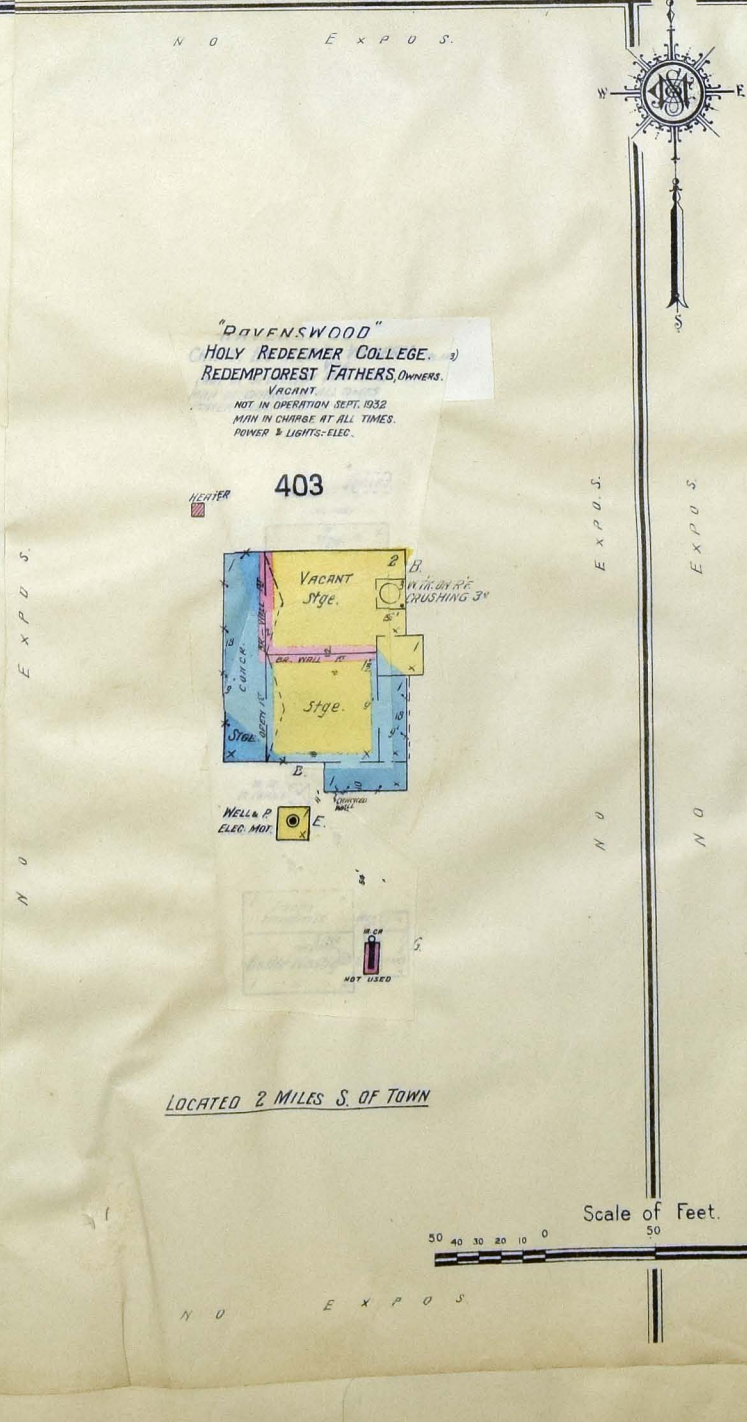
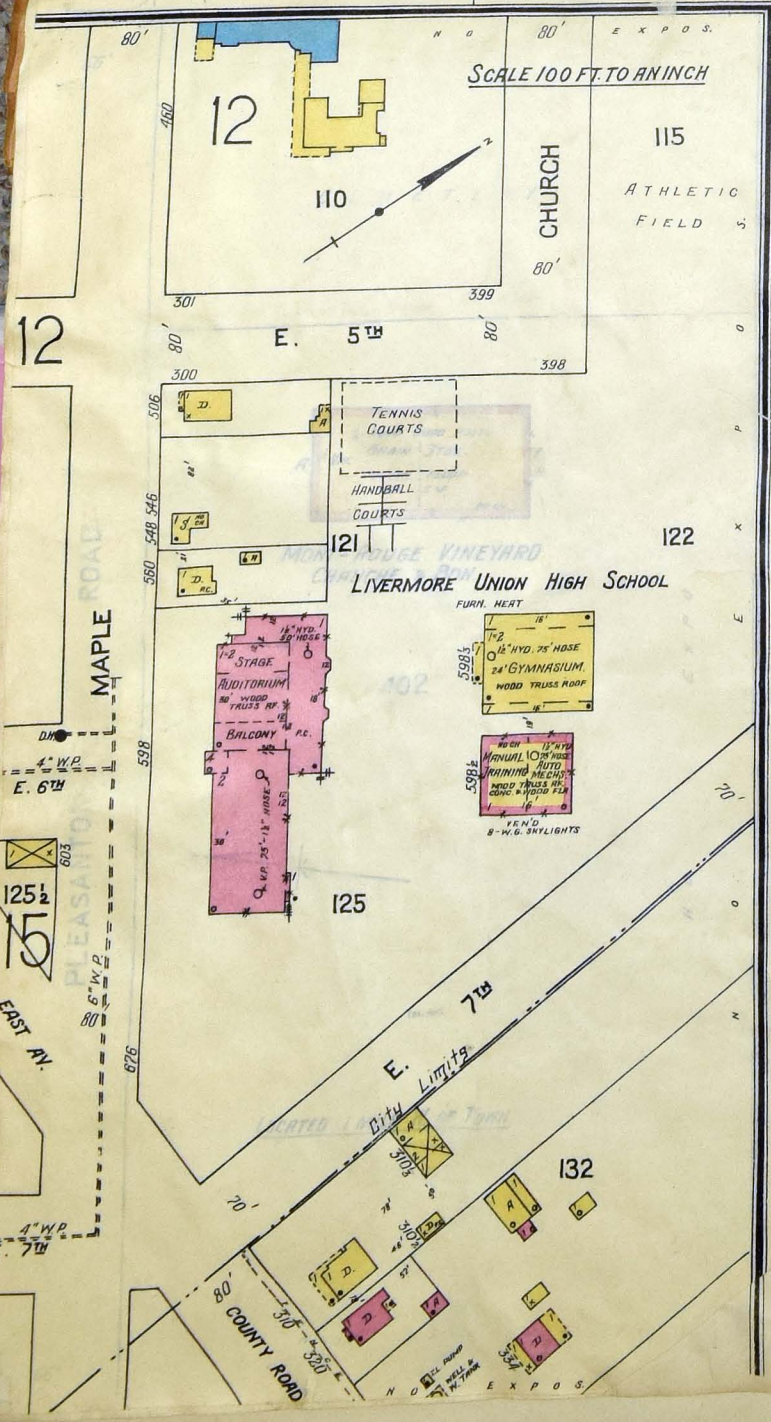
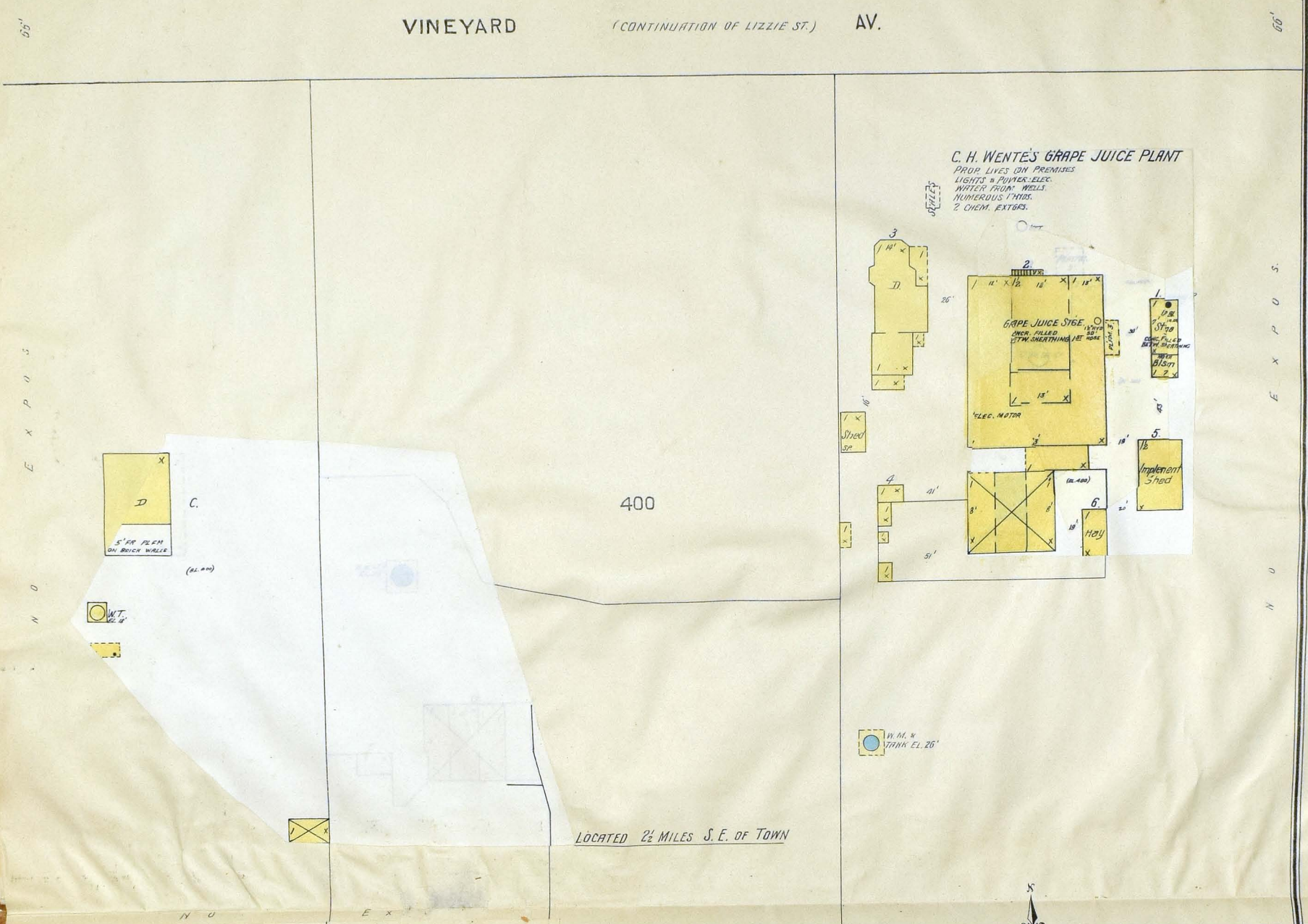
Scale of Feet.



May 1917
LIVERMORE
CAL.
COPYRIGHT 1917 BY SANBORN MAP CO.



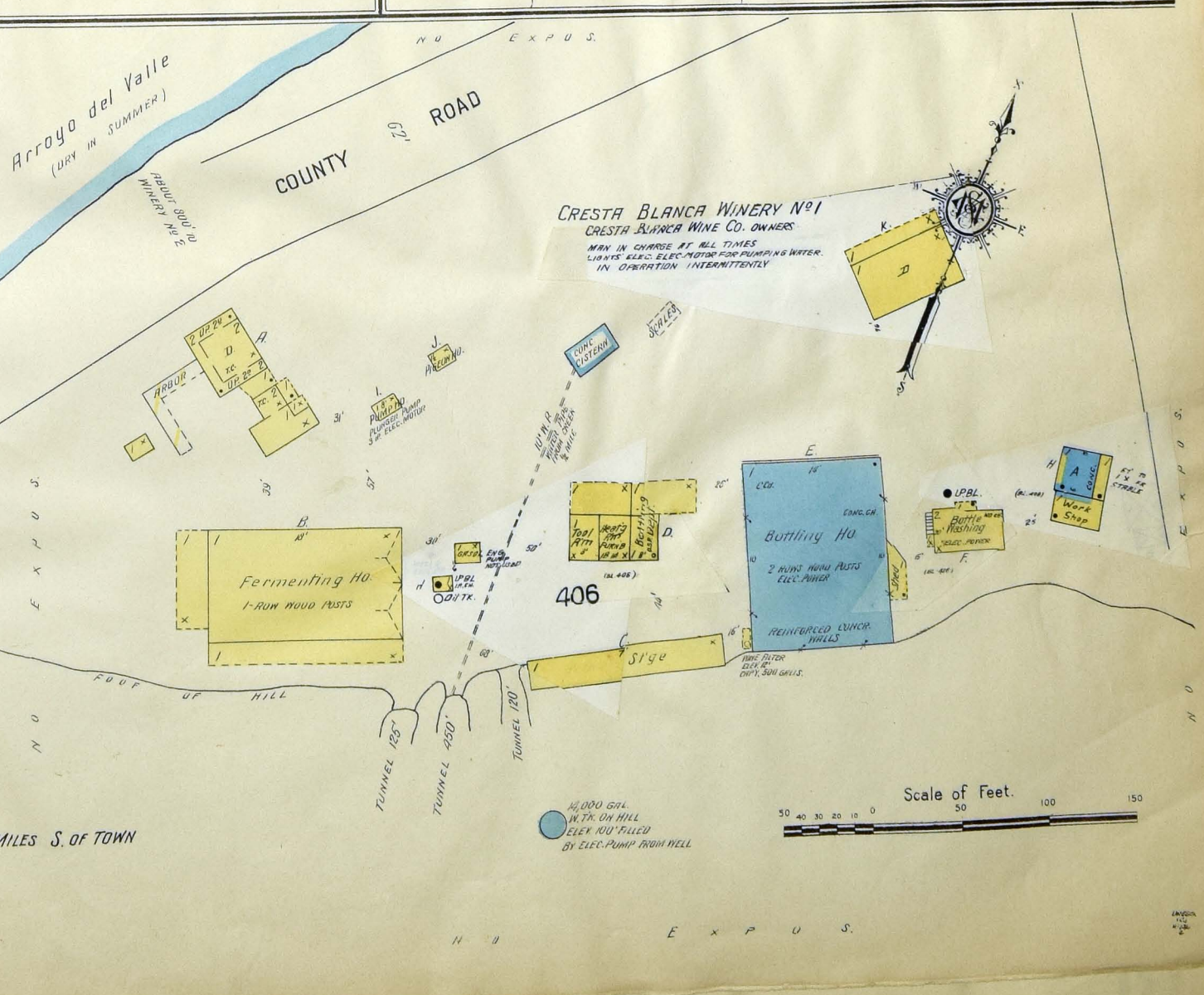
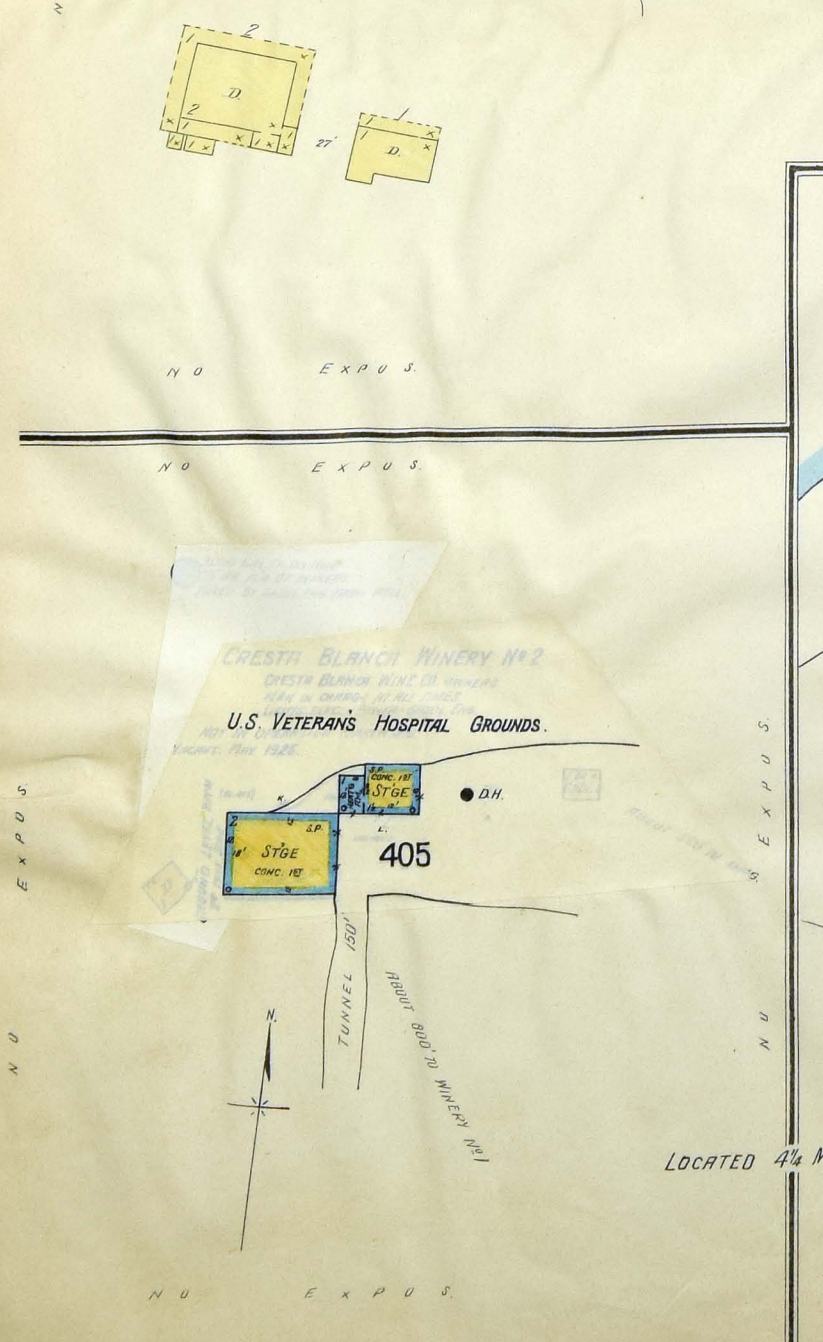
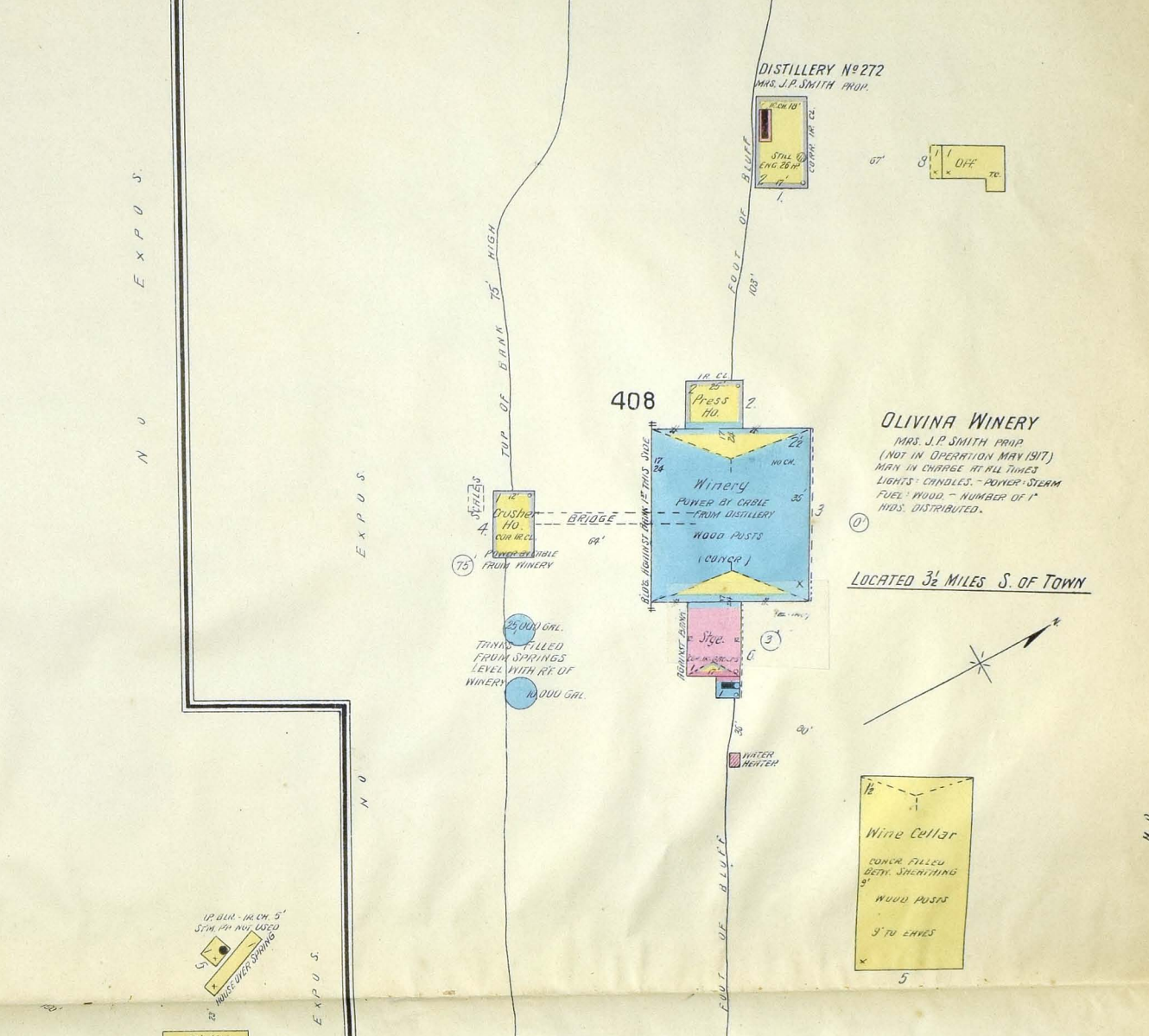
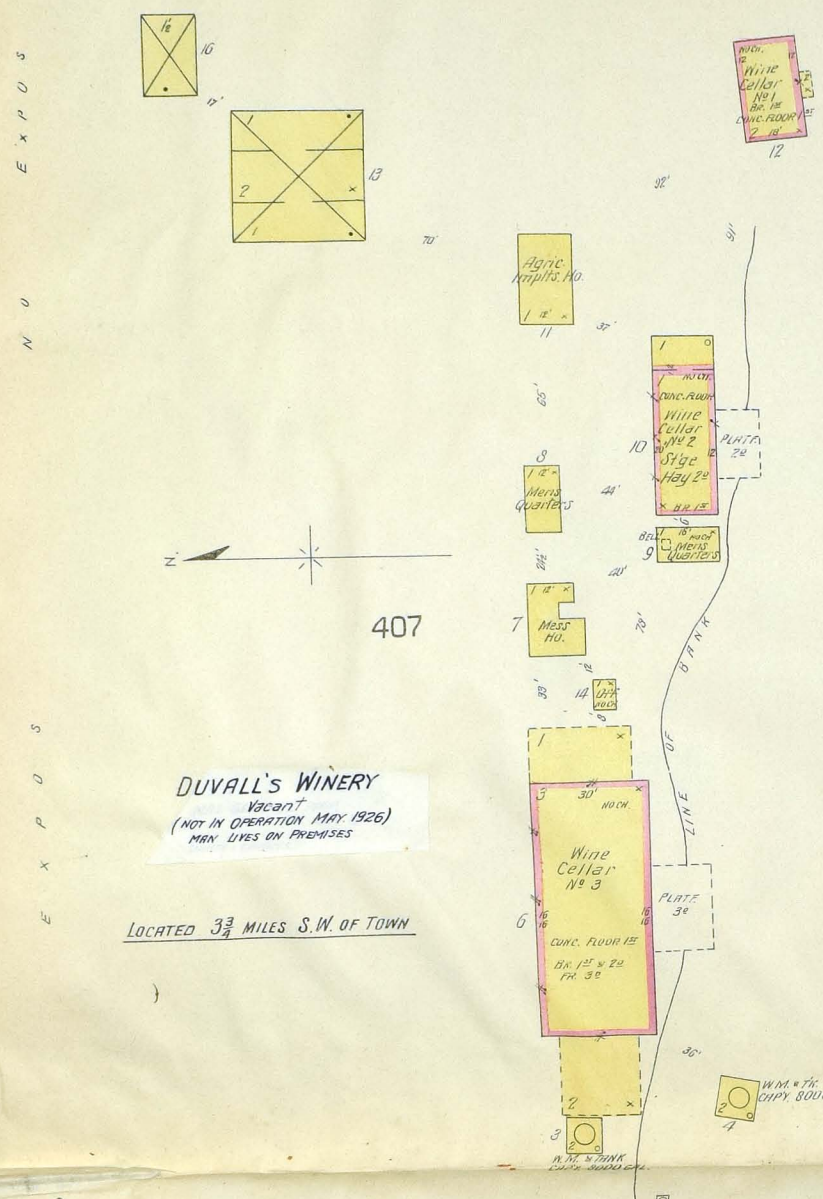
VINEYARD (CONTINUATION OF LIZZIE ST.) AV.



MAY 1917
LIVERMORE
CAL.
COPYRIGHT 1917 BY SANBORN MAP CO.

N U E X P O S .

N U E X P O S .

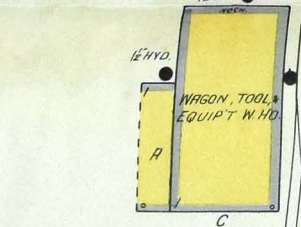


**COAST MANUFACTURING & SUPPLY CO'S
FUSE PLANT**
LOCATED AT TRAVERNO - 1/2 MI. E. OF LIVERMORE

NIGHT WATCHMAN - APPROVED CLOCK - WATER SUPPLY FROM A 200,000 GAL. CONC. RESERVOIR ON HILL APPROX. 3,000' W. OF PLANT, ELEV. 107' 18". PLANT GRADE - PRIMARY SOURCE FOR SPRINKLERS IS A 50,000 GAL. WOOD TANK ON STEEL FR., ELEV. 80' 10". HIGHEST SPRINKLER, LOC. ABOUT 250' S. OF PUMP HO. TANK FILLED FROM WELLS BY 4 ELEC. PUMPS - PRESSURE FROM TANK 33 LBS. - DIRECT PRESSURE FROM PUMPS IF NECESSARY. RESERVOIR SUPPLY ALSO AVAILABLE FOR SPRINKLER SYSTEM. HYD'S & HOSE AS SHOWN. 1 - FORD TRUCK WITH 2-35 GAL. CHEM. EXT'RS, 250' CHEM. HOSE & 200' 2 1/2" FIRE HOSE KEPT IN FIRE HO. SEC. 31.17



**S. H. PALMER CO. LTD.
GENERAL CONTRACTORS**
NO. WATCHMAN - FOREMAN LIVES ON PREMISES - WATER FROM A WELL BY AN ELEC. PUMP TO A 3,000 GAL. TANK ELEV. 22'. 5-2 1/2 GAL. CHEM. EXT'RS - 1-40 GAL. CHEM. CART.
S. H. PALMER'S BLDGS. FORMERLY SHOWN ON SH. 17



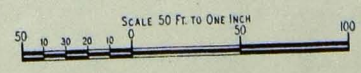
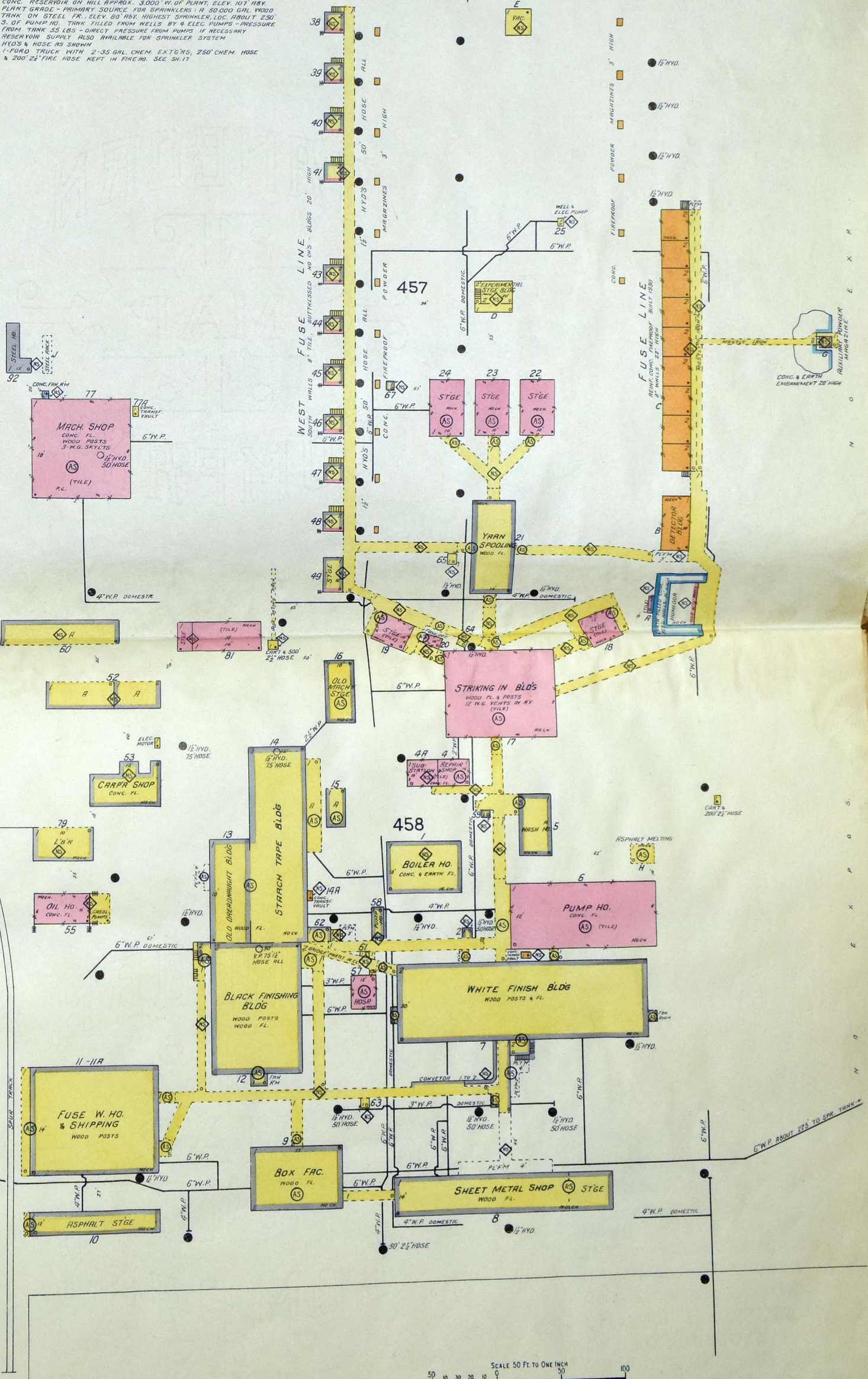
456

455

454

EQUIPMENT SHEDS

THESE BLDGS. FORMERLY SHOWN ON SH. 17



17

6" W.P. FROM 200,000 GAL. RESERVOIR

STABLES BEYOND